

INDEX SEMINUM 2019–2020

M U N I Botanical
S C I Garden

BOTANICAL GARDEN
FACULTY OF SCIENCE, MASARYK UNIVERSITY
KOTLÁŘSKÁ 2
CZ – 611 37 BRNO
CZECH REPUBLIC

Tel.: +420 549 495 660, e-mail: zahrada@sci.muni.cz, www.sci.muni.cz/bot_zahr

BOTANICAL GARDEN OF FACULTY OF SCIENCE OF MASARYK UNIVERSITY IN BRNO

The Botanical Garden of Faculty of Science of Masaryk University in Brno was founded in 1922 by Professor Josef Podpěra. The garden has continued to grow and develop since that time. During reconstruction of the garden in 1995–96, new greenhouses were built. At the present time we have a collection of about 4000 taxa, 1850 taxa in greenhouses and 2200 taxa outdoors.

1. The outdoor plant collection includes the Plant System (0.3 ha) in front of the greenhouses. In the Plant System a variety of species is shown by families; 85 families and 1500 species of vascular plants are grown here.
2. You can see samples of South Moravian vegetation and flora as follows: alluvian meadows and forests, oak and oak-hornbeam forests, non-forest xerothermophilous vegetation on limestone, serpentine or loess, submontane beech and spruce forests and sand dune flora. The area of this part is 0.4 ha. You can admire trees and shrubs from the temperate zone of Japan and China, Caucasus and Siberia, or from the Balkans and the Mediterranean. The rockeries and roof garden contain montane and subalpine species from the high mountains of Europe and North America.
3. The new greenhouses are a system of five tunnel-like structures with the largest one situated in the middle (max. height 10.5 m, area 1,200 m²). The greenhouses cover is made of a double layer of polyacrylamide.

The greenhouses contain:

- Tropical collection with *Victoria cruziana*
- Collection of ferns and cycads
- Subtropical collection with evergreen shrubs and trees and with *Wollemia nobilis*
- Collections of *Bromeliaceae*, *Cactaceae* and other succulents
- Grow greenhouse.

The botanical garden is open daily from 9 a.m. to 5 p.m. from April to September and from 9 a.m. to 3 p.m. in winter. Entrance to the garden is free, fee is collected for entrance to greenhouses.

STAFF

Mgr. Magdaléna Chytrá (director), Mgr. Kristýna Žáková, Mgr. Pavla Vlčková (collectors)

GEOGRAPHIC AND CLIMATIC INFORMATION

Botanical garden is located near the Brno city centre at approximately 240 above sea level. It's coordinates are 49°12'15"(latitude) and 16°35'50"(longitude). Information on annual precipitation from 2002 to 2019 and on mean monthly and yearly temperature and rainfall from 1961 to 2010 can be found in enclosed climographs.

NOMENCLATURE

1. Kaplan Z., Danihelka J., Chrtek J. jun., Kirschner J., Kubát K., Štech M. & Štěpánek J. [eds.] (2019): Klíč ke květeně České republiky [Key to the flora of the Czech Republic]. Ed. 2. – Academia, Praha.
2. Plants of the World online, Kew Science, available at <http://www.plantsoftheworldonline.org/>.
3. The Plant List, available at <http://www.theplantlist.org/>.

CONDITIONS

In response to the Convention of Biological Diversity (Rio de Janeiro 1992) and Nagoya Protocol on Access to Genetic Resources and the Fair and Equitable Sharing of Benefits Arising from their Utilization to the Convention on Biological Diversity (Nagoya 2010), the seeds are offered for a use in the fields of research, education, teaching, conservation and development of public botanical gardens. The commercialisation of the seeds, of the resulting plants or of their genetic material is strictly forbidden. Any scientific publication resulting of the use of this material must mention in the acknowledgements the Botanical Garden of Faculty of Science of Masaryk University in Brno.

By ordering seeds, you agree to comply with the above conditions.

We are an IPEN Member, code BRNU.

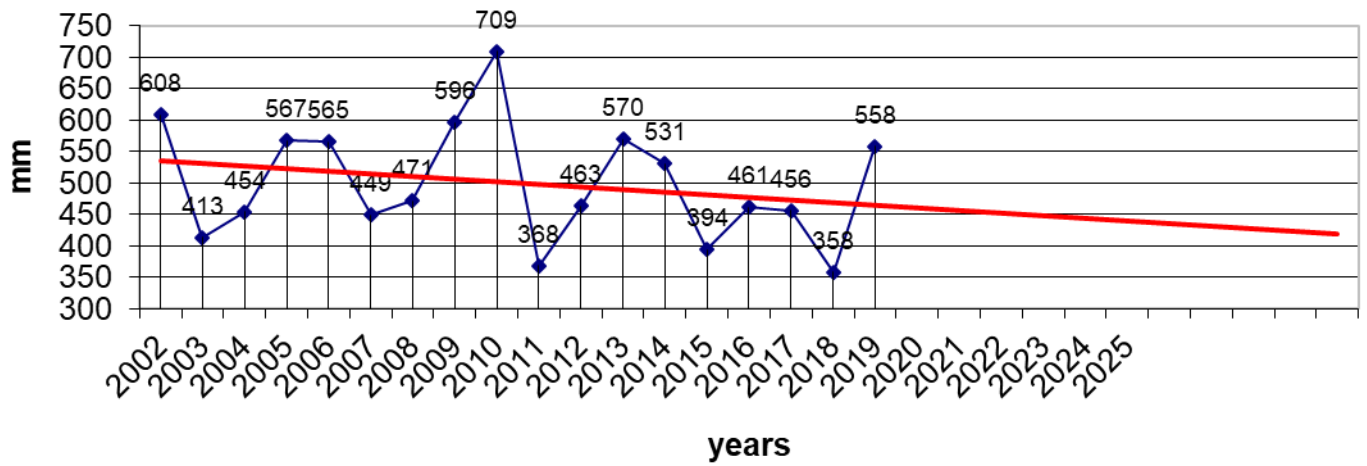
We are registered on CZ 003 Register of scientific institutions entitled to the exemption provided by Article VII, paragraph 6, of the Convention (available at <https://www.cites.org/eng/disc/text.php>).

We are not able to issue phytosanitary certificate with any delivery.

All seeds were collected in the botanical garden in 2019. The seeds are result of open pollination. Hybridization may occur. We cannot guarantee their genetic purity.

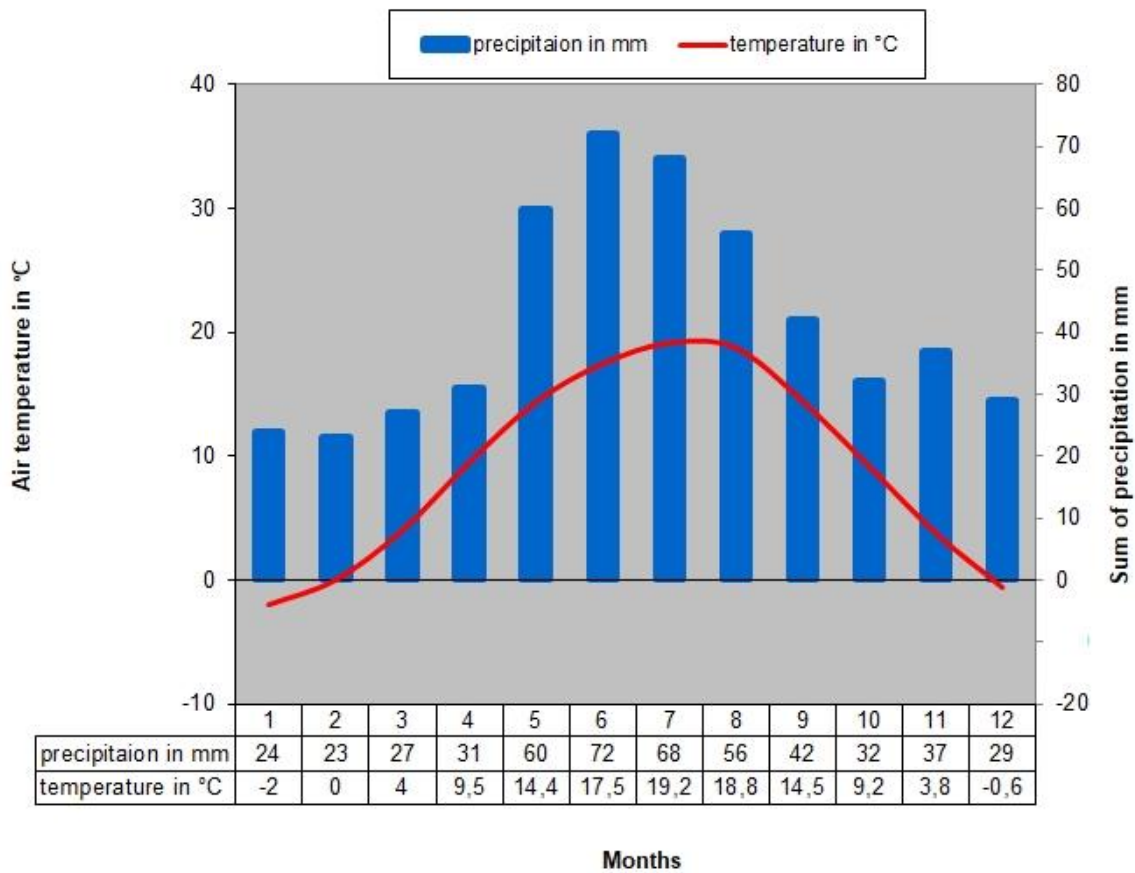
CLIMOGRAPHS

Rainfall in botanical garden



Climate diagramme at the climate station Brno-Tuřany from the period 1961-2010

Average of total annual precipitation: 500 mm, average annual temperature: 9,1 °C



SEEDS COLLECTED FROM PLANTS CULTIVATED OUTDOORS IN THE BOTANICAL GARDEN AND IN THE GREENHOUSES

G – plants cultivated in the greenhouses

ACANTHACEAE

1. *Acanthus hungaricus* XX-0-BRNU-2018-00001

ALISMATACEAE

2. *Alisma plantago-aquatica* XX-0-BRNU-2017-00200

ALLIACEAE

3. *Allium angulosum* XX-0-BRNU-2017-00291
4. *Allium carinatum* XX-0-BRNU-2017-00293
5. *Allium cyathophorum* XX-0-BRNU-2017-06867
6. *Allium ericetorum* XX-0-BRNU-2017-06865
7. *Allium fistulosum* XX-0-BRNU-2017-06864
8. *Allium flavum* XX-0-BRNU-2017-00302
9. *Allium macrostemon* XX-0-BRNU-2017-00310
10. *Allium nutans* XX-0-BRNU-2017-00294
11. *Allium oleraceum* XX-0-BRNU-2017-00312
12. *Allium schoenoprasum* XX-0-BRNU-2017-00318
13. *Allium senescens* XX-0-BRNU-2017-00320
14. *Allium senescens* ssp. *montanum* XX-0-BRNU-2017-00307
15. *Allium sicutum* XX-0-BRNU-2017-00339
16. *Allium tuberosum* XX-0-BRNU-2017-00324

AMARANTHACEAE

17. *Achyranthes aspera* XX-0-BRNU-2017-00217
18. *Amaranthus blitoides* XX-0-BRNU-2017-00222
19. *Amaranthus caudatus* XX-0-BRNU-2017-00230
20. *Amaranthus cruentus* XX-0-BRNU-2017-00225
21. *Amaranthus graecizans* XX-0-BRNU-2017-00227
22. *Amaranthus hypochondriacus* XX-0-BRNU-2017-00229
23. *Amaranthus powellii* CZ-0-BRNU-2017-00231

CZ; district Břeclav, municipality Sedlec, road to Mušlov village;
48° 47'N 16°41.4'E

- | | | |
|-----|--|----------------------|
| 24. | <i>Amaranthus retroflexus</i> | CZ-0-BRNU-2016-07053 |
| | CZ; district Břeclav, municipality Mikulov, Janičův vrch quarry near Mušlov village; 48°47.5'N 16°41.5'E | |
| 25. | <i>Froelichia gracilis</i> | XX-0-BRNU-2017-00261 |
| 26. | <i>Pleuropetalum darwinii</i> G | XX-0-BRNU-2018-07179 |

ANTHERICACEAE

- | | | |
|-----|---------------------------|----------------------|
| 27. | <i>Anthericum liliago</i> | XX-0-BRNU-2017-00845 |
| 28. | <i>Anthericum ramosum</i> | XX-0-BRNU-2017-00844 |

APIACEAE

- | | | |
|-----|---|----------------------|
| 29. | <i>Aethusa cynapium</i> | XX-0-BRNU-2017-00394 |
| 30. | <i>Anthriscus sylvestris</i> | XX-0-BRNU-2017-00404 |
| 31. | <i>Apium graveolens</i> | XX-0-BRNU-2017-00405 |
| 32. | <i>Astrantia major</i> | XX-0-BRNU-2017-00407 |
| 33. | <i>Athamanta turbith</i> | XX-0-BRNU-2017-00411 |
| 34. | <i>Bupleurum falcatum</i> | XX-0-BRNU-2017-00415 |
| 35. | <i>Bupleurum fruticosum</i> | XX-0-BRNU-2017-00417 |
| 36. | <i>Chaerophyllum aureum</i> | XX-0-BRNU-2017-00460 |
| 37. | <i>Chaerophyllum hirsutum</i> | XX-0-BRNU-2017-00462 |
| 38. | <i>Chaerophyllum temulum</i> | XX-0-BRNU-2017-00463 |
| 39. | <i>Cnidium dubium</i> | XX-0-BRNU-2017-00424 |
| 40. | <i>Cnidium silaifolium</i> | XX-0-BRNU-2017-00425 |
| 41. | <i>Coriandrum sativum</i> | XX-0-BRNU-2017-00427 |
| 42. | <i>Daucus carota</i> ssp. <i>carota</i> | CZ-0-BRNU-2019-07428 |
| | CZ; district Znojmo, town Znojmo, allotment garden at the northeast fringe of town; 48°51.8'N 16°03.3'E | |
| 43. | <i>Eryngium alpinum</i> | XX-0-BRNU-2017-00431 |
| 44. | <i>Eryngium amethystinum</i> | XX-0-BRNU-2017-00432 |
| 45. | <i>Eryngium bourgatii</i> | XX-0-BRNU-2017-00433 |
| 46. | <i>Eryngium caeruleum</i> | XX-0-BRNU-2017-00434 |
| 47. | <i>Eryngium campestre</i> | XX-0-BRNU-2017-00435 |
| 48. | <i>Eryngium planum</i> | XX-0-BRNU-2017-00439 |
| 49. | <i>Eryngium variifolium</i> | XX-0-BRNU-2017-00443 |
| 50. | <i>Falcaria vulgaris</i> | XX-0-BRNU-2017-00444 |
| 51. | <i>Ferula assa-foetida</i> | XX-0-BRNU-2019-07797 |
| 52. | <i>Ferulago galbanifera</i> | XX-0-BRNU-2017-00448 |

53.	<i>Foeniculum vulgare</i>	XX-0-BRNU-2017-00449
54.	<i>Heracleum sphondylium</i>	XX-0-BRNU-2017-00454
55.	<i>Laser trilobum</i>	XX-0-BRNU-2017-00465
56.	<i>Laserpitium latifolium</i>	XX-0-BRNU-2017-00467
57.	<i>Libanotis pyrenaica</i>	XX-0-BRNU-2017-00470
58.	<i>Ligusticum mutellina</i>	XX-0-BRNU-2017-00471
59.	<i>Myrrhis odorata</i>	XX-0-BRNU-2017-00475
60.	<i>Oenanthe silaifolia</i>	XX-0-BRNU-2017-00477
61.	<i>Orlaya grandiflora</i>	XX-0-BRNU-2017-00479
62.	<i>Peucedanum alsaticum</i>	CZ-0-BRNU-2017-00485

CZ; district Břeclav, municipality Sedlec, forest fringe near Horní Mušlovský rybník fishpond; 48°47.9'N 16°41.2'E

63.	<i>Peucedanum cervaria</i>	XX-0-BRNU-2017-00484
64.	<i>Peucedanum palustre</i>	XX-0-BRNU-2017-00486
65.	<i>Pimpinella major</i>	XX-0-BRNU-2017-00488
66.	<i>Pimpinella saxifraga</i>	XX-0-BRNU-2017-00490
67.	<i>Sanicula europaea</i>	XX-0-BRNU-2017-00492
68.	<i>Scandix pecten-veneris</i>	XX-0-BRNU-2017-00494
69.	<i>Seseli annuum</i>	XX-0-BRNU-2017-00496
70.	<i>Seseli osseum</i>	XX-0-BRNU-2017-00501
71.	<i>Seseli pallasii</i>	XX-0-BRNU-2017-00502
72.	<i>Sium latifolium</i>	XX-0-BRNU-2017-00505

APOCYNACEAE

73.	<i>Amsonia illustris</i>	XX-0-BRNU-2017-00520
74.	<i>Asclepias currasavica</i>	XX-0-BRNU-2017-00525
75.	<i>Asclepias incarnata</i>	XX-0-BRNU-2017-00526
76.	<i>Periploca sepium</i>	XX-0-BRNU-2017-00568
77.	<i>Vincetoxicum hirundinaria</i>	XX-0-BRNU-2017-00591
78.	<i>Vincetoxicum nigrum</i>	XX-0-BRNU-2017-00594
79.	<i>Vincetoxicum rossicum</i>	XX-0-BRNU-2017-07155

AQUIFOLIACEAE

80.	<i>Ilex pernyi</i>	XX-0-BRNU-2017-00602
-----	--------------------	----------------------

ARALIACEAE

81. *Eleutherococcus henryi* XX-0-BRNU-2017-00715
82. *Eleutherococcus sieboldianus* XX-0-BRNU-2017-00716

ARISTOLOCHIACEAE

83. *Aristolochia clematitis* XX-0-BRNU-2017-00810
84. *Aristolochia littoralis* G XX-0-BRNU-2017-00815
85. *Aristolochia macrophylla* XX-0-BRNU-2017-00807

ASPARAGACEAE

86. *Asparagus tenuifolius* XX-0-BRNU-2017-00851
87. *Asparagus verticillatus* XX-0-BRNU-2017-00852

ASPHODELACEAE

88. *Asphodeline liburnica* XX-0-BRNU-2017-06735
89. *Asphodelus albus* XX-0-BRNU-2017-06738
90. *Kniphofia uvaria* XX-0-BRNU-2017-06820

ASPLENIACEAE

91. *Asplenium bulbiferum* G XX-0-BRNU-2017-01023
92. *Asplenium ceterach* XX-0-BRNU-2017-01022
93. *Asplenium nidus* G XX-0-BRNU-2017-01028
94. *Asplenium ruta-muraria* XX-0-BRNU-2017-01019
95. *Asplenium scolopendrium* XX-0-BRNU-2017-01020
96. *Asplenium sulcatum* G XX-0-BRNU-2017-01025
97. *Asplenium trichomanes* XX-0-BRNU-2017-01017

ASTERACEAE

98. *Achillea collina* XX-0-BRNU-2017-01037
99. *Achillea crithmifolia* XX-0-BRNU-2017-01039
100. *Achillea filipendulina* XX-0-BRNU-2017-01041
101. *Achillea millefolium* XX-0-BRNU-2017-01036
102. *Achillea nobilis* XX-0-BRNU-2017-01033
103. *Achillea ochroleuca* SK-0-BRNU-2004-01046

SK; district Komárno, village Chotín, Chotínske Piesky sands; 47°48.7'N
18°12.9'E

104. *Achillea pannonica* XX-0-BRNU-2017-01048

105.	<i>Achillea pratensis</i>	XX-0-BRNU-2017-01049
106.	<i>Ageratina aromatica</i>	XX-0-BRNU-2017-01031
107.	<i>Ageratum houstonianum</i>	XX-0-BRNU-2017-01032
108.	<i>Ambrosia artemisiifolia</i>	XX-0-BRNU-2017-01055
109.	<i>Antennaria dioica</i>	XX-0-BRNU-2017-01064
110.	<i>Anthemis austriaca</i>	XX-0-BRNU-2017-01155
111.	<i>Anthemis cotula</i>	XX-0-BRNU-2017-01066
112.	<i>Anthemis tinctoria</i>	XX-0-BRNU-2017-01157
113.	<i>Artemisia absinthium</i>	XX-0-BRNU-2017-01078
114.	<i>Artemisia campestris</i>	AT-0-BRNU-2017-01079
	AT; Niederösterreich, district Hollabrunn, Obernalb bei Retz; 48°44.9'N 15°56.4'E	
115.	<i>Artemisia dracunculus</i>	XX-0-BRNU-2017-01080
116.	<i>Artemisia pontica</i>	XX-0-BRNU-2017-01082
117.	<i>Artemisia vulgaris</i>	CZ-0-BRNU-2018-07361
	CZ; district Brno-venkov, municipality Čebín, on the fringe of the village; 49°18.8'N 16°28.7'E	
118.	<i>Aster amellus</i>	XX-0-BRNU-2017-01090
119.	<i>Aster flaccidus</i>	XX-0-BRNU-2017-01094
120.	<i>Aster indicus</i>	XX-0-BRNU-2017-01105
121.	<i>Bidens frondosus</i>	XX-0-BRNU-2017-01103
122.	<i>Bidens pilosus</i>	ES-0-BRNU-2018-07324
	ES; Canary Islands, Tenerife	
123.	<i>Bupthalmum salicifolium</i>	XX-0-BRNU-2017-01106
124.	<i>Calendula officinalis</i>	XX-0-BRNU-2017-01108
125.	<i>Carduus nutans</i> ssp. <i>nutans</i>	XX-0-BRNU-2017-01114
126.	<i>Carlina vulgaris</i>	AT-0-SZU-2016-103
	AT; Pinzgau, Weissbach, Loffer, Hochkranz, meadow, 1600 msm; ex BG Salzburg; 47°31.5'N 12°47.4'E	
127.	<i>Catananche caerulea</i>	XX-0-BRNU-2017-01121
128.	<i>Centaurea benedicta</i>	DE-0-KIEL-19990604-70-61
	DE; ex BG Kiel	
129.	<i>Centaurea jacea</i> ssp. <i>angustifolia</i>	XX-0-BRNU-2017-01126
130.	<i>Centaurea jacea</i> ssp. <i>jacea</i>	XX-0-BRNU-2017-01131
131.	<i>Centaurea macrocephala</i>	XX-0-BRNU-2017-01130
132.	<i>Centaurea mollis</i>	XX-0-BRNU-2017-01127

133.	<i>Centaurea montana</i>	AT-0-GZU-16 1057
	AT; Steirisch-Niederösterreichische Kalkalpen, Dachstein-Totes Gebirge, Liezen, Angerkogel, 6 km nord von Liezen, 1800-2000 msm, 19. 8. 2016; ex BG Graz; 47°37.1'N 14°13.7'E	
134.	<i>Centaurea scabiosa</i>	XX-0-BRNU-2017-01124
135.	<i>Centaurea stoebe</i>	AT-0-BRNU-2018-07372
	AT; Niederösterreich, district Hollabrunn, Obernalb bei Retz; 48°44.9'N 15°56.4'E	
136.	<i>Cichorium intybus</i>	XX-0-BRNU-2017-01134
137.	<i>Chondrilla juncea</i>	XX-0-BRNU-2017-01240
138.	<i>Cirsium canum</i>	XX-0-BRNU-2017-01138
139.	<i>Cirsium vulgare</i>	CZ-0-BRNU-2017-01144
	CZ; Brno, Bráfova street, allotment garden next to Svatka river; 49°12.3'N 16°34.1'E	
140.	<i>Coreopsis grandiflora</i>	US-0-BRNU-2017-07111
	USA; Illinois, Racine Co., Zion; ex BG Weinheim; 42°28.1'N 87°48.5'W	
141.	<i>Coreopsis pubescens</i>	XX-0-BRNU-2017-01147
142.	<i>Cosmos sulphureus</i>	XX-0-BRNU-2017-01153
143.	<i>Crepis biennis</i>	XX-0-BRNU-2017-01162
144.	<i>Crepis capillaris</i>	XX-0-BRNU-2017-01163
145.	<i>Crepis pannonica</i>	CZ-0-BRNU-2017-01167
	CZ; district Vyškov, municipality Komořany, Stepní Stráž u Komořan steppic grasslands; 49°11.7'N 16°55.5'E	
146.	<i>Crepis sibirica</i>	XX-0-BRNU-2017-01171
147.	<i>Echinacea purpurea</i>	XX-0-BRNU-2017-01182
148.	<i>Echinops exaltatus</i>	XX-0-BRNU-2017-01183
149.	<i>Echinops ritro</i> ssp. <i>ruthenicus</i>	XX-0-BRNU-2017-01185
150.	<i>Echinops sphaerocephalus</i>	XX-0-BRNU-2017-01186
151.	<i>Erigeron speciosus</i>	XX-0-BRNU-2017-01191
152.	<i>Eupatorium cannabinum</i>	XX-0-BRNU-2017-01198
153.	<i>Gaillardia pulchella</i>	XX-0-BRNU-2017-01202
154.	<i>Galatella linoisyris</i>	XX-0-BRNU-2017-01206
155.	<i>Galinsoga parviflora</i>	XX-0-BRNU-2017-01207
156.	<i>Galinsoga quadriradiata</i>	XX-0-BRNU-2017-01208
157.	<i>Glebionis coronaria</i>	XX-0-BRNU-2017-01213
158.	<i>Helenium puberulum</i>	XX-0-BRNU-2017-01218
159.	<i>Heliopsis helianthoides</i>	XX-0-BRNU-2017-01227
160.	<i>Helminthotheca echioides</i>	XX-0-BRNU-2019-07535

161.	<i>Hieracium murorum</i>	XX-0-BRNU-2017-01231
162.	<i>Hieracium sabaudum</i>	XX-0-BRNU-2018-07214
163.	<i>Hieracium schmidtii</i>	XX-0-BRNU-2017-01229
164.	<i>Hieracium umbellatum</i>	XX-0-BRNU-2017-01236
165.	<i>Inula germanica</i>	XX-0-BRNU-2017-01248
166.	<i>Inula helenium</i>	XX-0-BRNU-2017-01250
167.	<i>Inula oculus-christii</i>	XX-0-BRNU-2017-01254
168.	<i>Ismelia carinata</i>	XX-0-BRNU-2017-07031
169.	<i>Iva xanthiifolia</i>	XX-0-BRNU-2017-01259
170.	<i>Klasea lycopifolia</i>	XX-0-BRNU-2017-01262
171.	<i>Klasea radiata</i>	XX-0-BRNU-2017-01264
172.	<i>Lactuca perennis</i>	XX-0-BRNU-2017-01266
173.	<i>Lactuca quercina</i>	XX-0-BRNU-2017-01267
174.	<i>Lactuca sativa</i>	XX-0-BRNU-2017-01269
175.	<i>Lactuca serriola</i>	XX-0-BRNU-2017-01268
176.	<i>Leibnitzia anandria</i>	XX-0-BRNU-2017-01210
177.	<i>Leibnitzia nepalensis</i>	XX-0-BRNU-2019-07741
178.	<i>Leontodon hispidus</i>	XX-0-BRNU-2017-01272
179.	<i>Leontopodium alpinum</i>	XX-0-BRNU-2017-01277
180.	<i>Leontopodium palibinianum</i>	XX-0-BRNU-2017-01276
181.	<i>Liatris spicata</i>	XX-0-BRNU-2017-01281
182.	<i>Ligularia sachalinensis</i>	XX-0-BRNU-2017-01289
183.	<i>Matricaria chamomilla</i>	XX-0-BRNU-2017-01294
184.	<i>Mycelis muralis</i>	XX-0-BRNU-2017-01295
185.	<i>Picris hieracioides</i>	XX-0-BRNU-2017-01299
186.	<i>Pilosella officinarum</i>	XX-0-BRNU-2017-01301
187.	<i>Prenanthes purpurea</i>	XX-0-BRNU-2017-01304
188.	<i>Psephellus bellus</i>	XX-0-BRNU-2017-01306
189.	<i>Pulicaria dysenterica</i>	XX-0-BRNU-2017-01311
190.	<i>Ratibida pinnata</i>	XX-0-BRNU-2017-01313
191.	<i>Rhaponticum scariosum</i> ssp. <i>rhaponticum</i>	XX-0-BRNU-2017-01314
192.	<i>Rudbeckia hirta</i>	XX-0-BRNU-2017-06902
193.	<i>Rudbeckia laciniata</i>	XX-0-BRNU-2017-01319
194.	<i>Rudbeckia occidentalis</i>	XX-0-BRNU-2017-01320
195.	<i>Scorzonera hispanica</i>	XX-0-BRNU-2017-01327
196.	<i>Senecio erucifolius</i>	XX-0-BRNU-2017-01335
197.	<i>Senecio viscosus</i>	XX-0-BRNU-2017-01345

198.	<i>Senecio vulgaris</i>	XX-0-BRNU-2017-01344
199.	<i>Silybum marianum</i>	XX-0-BRNU-2017-01350
200.	<i>Solidago virgaurea</i>	XX-0-BRNU-2017-01354
201.	<i>Sonchus oleraceus</i>	XX-0-BRNU-2017-01358
202.	<i>Tagetes patula</i>	XX-0-BRNU-2017-01366
203.	<i>Tagetes tenuifolia</i>	XX-0-BRNU-2017-01367
204.	<i>Tanacetum corymbosum</i>	XX-0-BRNU-2017-01370
205.	<i>Tanacetum parthenium</i>	XX-0-BRNU-2017-01382
206.	<i>Tanacetum vulgare</i>	XX-0-BRNU-2017-01381
207.	<i>Telekia speciosa</i>	XX-0-BRNU-2017-01383
208.	<i>Tragopogon orientalis</i>	SK-0-BRNU-2017-07024
	SK; Slovenský kras, meadow near the road from Drienovec village to Drienovské kúpele, ex BG Košice; 48°37.2'N 20°57.3'E	
209.	<i>Tragopogon pratensis</i>	CZ-0-BRNU-2017-01391
	CZ; district Jindřichův Hradec, between villages Číměř and Hradiště; 49°02.1'N 15°04.9'E	
210.	<i>Tripleurospermum inodorum</i>	XX-0-BRNU-2017-01392
211.	<i>Xanthium albinum</i>	XX-0-BRNU-2017-01401
212.	<i>Zinnia elegans</i>	XX-0-BRNU-2017-01406
213.	<i>Zinnia marylandica</i>	XX-0-BRNU-2019-07565

BERBERIDACEAE

214.	<i>Berberis gagnepainii</i> var. <i>lanceifolia</i>	XX-0-BRNU-2017-01476
215.	<i>Berberis thunbergii</i> 'Atropurpurea'	XX-0-BRNU-2017-01481
216.	<i>Berberis vulgaris</i>	XX-0-BRNU-2017-01485
217.	<i>Mahonia aquifolium</i>	XX-0-BRNU-2017-01499
218.	<i>Mahonia bealei</i>	XX-0-BRNU-2017-01503

BIGNONIACEAE

219.	<i>Campsis radicans</i>	XX-0-BRNU-2017-01526
220.	<i>Catalpa bignonioides</i>	XX-0-BRNU-2017-01528
221.	<i>Catalpa ovata</i>	XX-0-BRNU-2017-01530
222.	<i>Catalpa speciosa</i>	XX-0-BRNU-2017-01529
223.	<i>Incarvillea olgae</i>	XX-0-BRNU-2017-01534

BLECHNACEAE

224. *Blechnum brasiliense* G XX-0-BRNU-2017-01546
225. *Blechnum occidentale* G XX-0-BRNU-2017-01548

BORAGINACEAE

226. *Alkanna orientalis* XX-0-BRNU-2017-01551
227. *Asperugo procumbens* CZ-0-BRNU-2017-01555
CZ; Brno, Černovice city district; 49°11.1'N 16°38.2'E
228. *Buglossoides arvensis* XX-0-BRNU-2017-01561
229. *Buglossoides purpureocaerulea* XX-0-BRNU-2017-01560
230. *Cerinthe minor* XX-0-BRNU-2017-01562
231. *Cynoglossum officinale* XX-0-BRNU-2017-01563
232. *Echium vulgare* XX-0-BRNU-2017-01572
233. *Lithospermum officinale* XX-0-BRNU-2017-01584
234. *Myosotis arvensis* XX-0-BRNU-2017-01589
235. *Omphalodes linifolia* XX-0-BRNU-2017-01597

BRASSICACEAE

236. *Aethionema grandiflorum* XX-0-BRNU-2017-01618
237. *Alliaria petiolata* XX-0-BRNU-2017-01622
238. *Alyssum alyssoides* XX-0-BRNU-2017-01623
239. *Alyssum murale* XX-0-BRNU-2017-01625
240. *Aurinia saxatilis* XX-0-BRNU-2017-01640
241. *Barbarea vulgaris* XX-0-BRNU-2017-01641
242. *Berteroa incana* XX-0-BRNU-2017-01642
243. *Brassica nigra* XX-0-BRNU-2017-01648
244. *Brassica rapa* Rapa Group XX-0-BRNU-2017-01644
245. *Bunias orientalis* XX-0-BRNU-2017-01652
246. *Capsella bursa-pastoris* XX-0-BRNU-2017-01655
247. *Crambe maritima* XX-0-BRNU-2017-01666
248. *Descurainia sophia* XX-0-BRNU-2017-01670
249. *Diplotaxis tenuifolia* XX-0-BRNU-2017-01672
250. *Eruca sativa* XX-0-BRNU-2017-01675
251. *Erysimum cheiri* XX-0-BRNU-2017-07163
252. *Erysimum durum* CZ-0-BRNU-2019-07801

CZ; district Jindřichův Hradec, municipality Slavonice, at the train station; 48°59.6'N 15°20.9'E

253.	<i>Hesperis matronalis</i>	XX-0-BRNU-2017-01680
254.	<i>Hesperis tristis</i>	CZ-0-BRNU-2017-01682
	CZ; district Brno-venkov, municipality Tvarožná, plants cultivated in village gardens from seeds collected in surroundings of the village; 49°11.5'N 16°45.9'E	
255.	<i>Hornungia alpina</i>	XX-0-BRNU-2019-07424
256.	<i>Iberis amara</i>	XX-0-BRNU-2017-01687
257.	<i>Isatis tinctoria</i>	XX-0-BRNU-2017-01693
258.	<i>Lobularia maritima</i>	XX-0-BRNU-2017-01698
259.	<i>Lunaria annua</i>	XX-0-BRNU-2017-01701
260.	<i>Raphanus sativus</i> Hybernus Group	XX-0-BRNU-2017-01706
261.	<i>Sinapis alba</i>	XX-0-BRNU-2017-01711
262.	<i>Sisymbrium austriacum</i> ssp. <i>austriacum</i>	XX-0-BRNU-2017-01716
263.	<i>Sisymbrium loeselii</i>	XX-0-BRNU-2017-01718
264.	<i>Sisymbrium luteum</i>	XX-0-BRNU-2017-01712
265.	<i>Sisymbrium strictissimum</i>	XX-0-BRNU-2017-01717
266.	<i>Thlaspi arvense</i>	XX-0-BRNU-2017-01721

BUTOMACEAE

267.	<i>Butomus umbellatus</i>	XX-0-BRNU-2017-01916
------	---------------------------	----------------------

CACTACEAE

268.	<i>Opuntia phaeacantha</i>	XX-0-BRNU-2017-02409
------	----------------------------	----------------------

CALYCANTHACEAE

269.	<i>Calycanthus floridus</i>	XX-0-BRNU-2017-02535
------	-----------------------------	----------------------

CAMPANULACEAE

270.	<i>Adenophora liliifolia</i>	XX-0-BRNU-2017-02542
271.	<i>Asyneuma canescens</i>	XX-0-BRNU-2017-02543
272.	<i>Campanula alliarifolia</i>	XX-0-BRNU-2017-02548
273.	<i>Campanula bononiensis</i>	XX-0-BRNU-2017-02552
274.	<i>Campanula carpatica</i>	XX-0-BRNU-2017-02553
275.	<i>Campanula cochlearifolia</i>	XX-0-BRNU-2017-02549
276.	<i>Campanula garganica</i>	XX-0-BRNU-2017-02554
277.	<i>Campanula glomerata</i>	XX-0-BRNU-2017-02558
278.	<i>Campanula grossekii</i>	XX-0-BRNU-2017-02560

279.	<i>Campanula medium</i>	XX-0-BRNU-2017-02565
280.	<i>Campanula punctata</i>	XX-0-BRNU-2017-02569
281.	<i>Campanula rapunculoides</i>	XX-0-BRNU-2017-02576
282.	<i>Campanula sarmatica</i>	XX-0-BRNU-2017-02582
283.	<i>Campanula tommasiniana</i>	XX-0-BRNU-2017-02588
284.	<i>Campanula trachelium</i>	XX-0-BRNU-2017-02589
285.	<i>Codonopsis lanceolata</i>	XX-0-BRNU-2017-02596
286.	<i>Codonopsis pilosula</i> ssp. <i>tangshen</i>	XX-0-BRNU-2017-02597
287.	<i>Edraianthus tenuifolius</i>	XX-0-BRNU-2017-02601
288.	<i>Platycodon grandiflorus</i>	XX-0-BRNU-2017-07145

CANNABACEAE

289.	<i>Humulus lupulus</i>	CZ-0-BRNU-2018-07232
	CZ; Brno, Bráfova street, allotment garden next to Svratka river; 49°12.3'N 16°34.1'E	

CAPPARIDACEAE

290.	<i>Cleome violacea</i>	XX-0-BRNU-2017-02638
------	------------------------	----------------------

CAPRIFOLIACEAE

291.	<i>Lonicera japonica</i>	XX-0-BRNU-2018-07234
292.	<i>Lonicera pileata</i>	XX-0-BRNU-2017-02694
293.	<i>Symphoricarpos albus</i>	XX-0-BRNU-2017-02722
294.	<i>Symphoricarpos albus</i> ssp. <i>laevigatus</i>	XX-0-BRNU-2017-02723
295.	<i>Symphoricarpos orbiculatus</i>	XX-0-BRNU-2017-02714

CARYOPHYLLACEAE

296.	<i>Agrostemma githago</i>	XX-0-BRNU-2017-02733
297.	<i>Dianthus armeria</i>	XX-0-BRNU-2017-02744
298.	<i>Dianthus carthusianorum</i>	XX-0-BRNU-2017-02745
299.	<i>Dianthus fragrans</i>	XX-0-BRNU-2017-02753
300.	<i>Dianthus giganteus</i>	XX-0-BRNU-2017-02757
301.	<i>Dianthus giganteus</i> ssp. <i>croaticus</i>	XX-0-BRNU-2017-02772
302.	<i>Dianthus gratianopolitanus</i>	XX-0-BRNU-2017-02759
303.	<i>Dianthus hyssopifolius</i>	XX-0-BRNU-2017-02769
304.	<i>Dianthus knappii</i>	XX-0-BRNU-2017-02760
305.	<i>Dianthus petraeus</i>	XX-0-BRNU-2017-02764

306.	<i>Eremogone procera</i>	XX-0-BRNU-2017-02773
307.	<i>Gypsophila acutifolia</i>	XX-0-BRNU-2017-02775
308.	<i>Gypsophila fastigiata</i>	XX-0-BRNU-2017-02777
309.	<i>Gypsophila tenuifolia</i>	XX-0-BRNU-2017-02774
310.	<i>Lychnis coronaria</i>	XX-0-BRNU-2017-02786
311.	<i>Lychnis flos-cuculi</i>	XX-0-BRNU-2017-02788
312.	<i>Lychnis flos-jovis</i>	XX-0-BRNU-2017-02790
313.	<i>Minuartia laricifolia</i>	XX-0-BRNU-2017-02799
314.	<i>Petrorhagia prolifera</i>	XX-0-BRNU-2017-02807
315.	<i>Petrorhagia saxifraga</i>	XX-0-BRNU-2017-02804
316.	<i>Saponaria officinalis</i>	XX-0-BRNU-2017-02812
317.	<i>Silene italica</i>	XX-0-BRNU-2017-02818
318.	<i>Silene latifolia</i> ssp. <i>alba</i>	CZ-0-BRNU-2017-07116

CZ; Brno, between buildings on campus of Faculty of Science of Masaryk University on Kotlářská street; 49°12.3'N 16°35.9'E

319.	<i>Silene noctiflora</i>	XX-0-BRNU-2017-02838
320.	<i>Silene nutans</i>	XX-0-BRNU-2017-02831
321.	<i>Silene otites</i>	XX-0-BRNU-2017-02832
322.	<i>Silene schafta</i>	XX-0-BRNU-2017-02836
323.	<i>Silene viscosa</i>	XX-0-BRNU-2017-02817
324.	<i>Silene vulgaris</i>	XX-0-BRNU-2017-06905
325.	<i>Silene zawadskii</i>	XX-0-BRNU-2017-02841
326.	<i>Vaccaria hispanica</i>	DE-0-DR-004039
	DE; ex BG TU Dresden	
327.	<i>Viscaria vulgaris</i>	XX-0-BRNU-2017-02850

CELASTRACEAE

328.	<i>Celastrus orbiculatus</i>	XX-0-BRNU-2017-07140
329.	<i>Euonymus alatus</i>	XX-0-BRNU-2017-02861
330.	<i>Euonymus europaeus</i>	XX-0-BRNU-2017-02860
331.	<i>Euonymus nanus</i>	XX-0-BRNU-2017-02868
332.	<i>Euonymus verrucosus</i>	XX-0-BRNU-2017-02869

CELTIDACEAE

333.	<i>Celtis australis</i>	XX-0-BRNU-2017-02628
------	-------------------------	----------------------

CHENOPODIACEAE

334. *Atriplex hortensi* XX-0-BRNU-2017-00238
335. *Axyris amaranthoides* XX-0-BRNU-2017-00246
336. *Chenopodium album* CZ-0-BRNU-2016-07052
CZ; district Břeclav, municipality Mikulov, Janičův vrch quarry near Mušlov village; 48°47.5'N 16°41.5'E
337. *Chenopodium ficifolium* XX-0-BRNU-2017-00266
338. *Chenopodium giganteum* XX-0-BRNU-2017-00270
339. *Chenopodium opulifolium* CZ-0-BRNU-2019-07802
CZ; Brno, Vinohrady city district; 49°12.3'N 16°39.5'E
340. *Chenopodium polyspermum* CZ-0-BRNU-2017-00272
CZ; district Břeclav, municipality Sedlec; 48°47'N 16°41'E
341. *Chenopodium urbicum* XX-0-BRNU-2017-00274
342. *Chenopodium vulvaria* XX-0-BRNU-2017-00275
343. *Dysphania botrys* XX-0-BRNU-2017-00258
344. *Dysphania schraderiana* XX-0-BRNU-2017-00259

CISTACEAE

345. *Helianthemum grandiflorum* ssp. *obscurum* XX-0-BRNU-2017-02887

COMMELINACEAE

346. *Commelina communis* XX-0-BRNU-2017-02902
347. *Tradescantia virginiana* XX-0-BRNU-2017-02919

CONVALLARIACEAE

348. *Convallaria majalis* XX-0-BRNU-2017-00869
349. *Polygonatum latifolium* XX-0-BRNU-2017-00967
350. *Polygonatum multiflorum* XX-0-BRNU-2017-00969
351. *Polygonatum odoratum* XX-0-BRNU-2017-00970

CONVOLVULACEAE

352. *Convolvulus tricolor* XX-0-BRNU-2017-02933

CORNACEAE

353. *Cornus alba* XX-0-BRNU-2017-02956
354. *Cornus mas* XX-0-BRNU-2017-02966
355. *Cornus racemosa* XX-0-BRNU-2017-02967
356. *Cornus sanguinea* XX-0-BRNU-2017-02968

CRASSULACEAE

357. *Hylotelephium populifolium* XX-0-BRNU-2017-03118
358. *Hylotelephium maximum* XX-0-BRNU-2017-03060
359. *Sedum aizoon* XX-0-BRNU-2017-03097
360. *Sedum album* XX-0-BRNU-2017-03098
361. *Sedum kamtschaticum* XX-0-BRNU-2017-03113

CUCURBITACEAE

362. *Cucumis melo* XX-0-BRNU-2017-03146
363. *Cucumis myriocarpus* XX-0-BRNU-2017-03149
364. *Cyclanthera brachystachya* XX-0-BRNU-2017-03162
365. *Cyclanthera pedata* XX-0-BRNU-2017-03163

CUPRESSACEAE

366. *Chamaecyparis lawsoniana* XX-0-BRNU-2017-03189
367. *Juniperus communis* var. *communis* XX-0-BRNU-2017-03210
368. *Metasequoia glyptostroboides* XX-0-BRNU-2017-03220
369. *Thuja occidentalis* XX-0-BRNU-2017-03241
370. *Xanthocyparis nootkatensis* 'Pendula' XX-0-BRNU-2017-03195

CUSCUTACEAE

371. *Cuscuta europaea* XX-0-BRNU-2017-02936

CYPERACEAE

372. *Carex acutiformis* XX-0-BRNU-2017-03258
373. *Carex alba* XX-0-BRNU-2017-03262
374. *Carex bohémica* CZ-0-BRNU-2019-07481

CZ; district Žďár nad Sázavou, fishponds SW from Žďár nad Sázavou town; 49°32.2'N 15°53.6'E

375. *Carex divulsa* XX-0-BRNU-2017-03277
376. *Carex grayi* XX-0-BRNU-2017-03284

377.	<i>Carex leersii</i>	XX-0-BRNU-2017-03294
378.	<i>Carex leporina</i>	XX-0-BRNU-2017-03296
379.	<i>Carex michelii</i>	XX-0-BRNU-2019-07791
380.	<i>Carex muricata</i>	XX-0-BRNU-2017-03304
381.	<i>Carex muskingumensis</i>	XX-0-BRNU-2017-03309
382.	<i>Carex nigra</i>	XX-0-BRNU-2017-03310
383.	<i>Carex otomana</i>	XX-0-BRNU-2017-03293
384.	<i>Carex otrubae</i>	XX-0-BRNU-2017-03313
385.	<i>Carex panicea</i>	CZ-0-BRNU-2016-03315
	CZ; district Hodonín, municipality Dubňany, wetlands 2 km southeast from village; 48°54.8'N 17°05.3'E	
386.	<i>Carex paniculata</i>	XX-0-BRNU-2017-03314
387.	<i>Carex pilosa</i>	XX-0-BRNU-2017-03317
388.	<i>Carex remota</i>	XX-0-BRNU-2017-03323
389.	<i>Carex spicata</i>	XX-0-BRNU-2017-03329
390.	<i>Carex sylvatica</i>	XX-0-BRNU-2017-03331
391.	<i>Eleocharis palustris</i>	XX-0-BRNU-2017-03342
392.	<i>Schoenoplectus lacustris</i>	XX-0-BRNU-2017-03352
393.	<i>Schoenoplectus tabernaemontani</i>	XX-0-BRNU-2017-03353
394.	<i>Schoenoplectus triqueter</i>	XX-0-BRNU-2017-03354
395.	<i>Scirpoides holoschoenus</i>	XX-0-BRNU-2017-03349
396.	<i>Scirpus radicans</i>	CZ-0-BRNU-2016-03350
	CZ; district Jindřichův Hradec, municipality Bednárec, Šedivý rybník fishpond; 49°11.4'N 15°07.4'E	

CYSTOPTERIDACEAE

397.	<i>Cystopteris fragilis</i>	XX-0-BRNU-2017-03356
------	-----------------------------	----------------------

DIOSCOREACEAE

398.	<i>Dioscorea balcanica</i>	XX-0-BRNU-2017-03382
399.	<i>Dioscorea caucasica</i>	XX-0-BRNU-2017-03383

DIPSACACEAE

400.	<i>Cephalaria gigantea</i>	XX-0-BRNU-2017-02647
401.	<i>Cephalaria leucantha</i>	XX-0-BRNU-2017-02645
402.	<i>Cephalaria uralensis</i>	XX-0-BRNU-2017-02648
403.	<i>Dipsacus ferox</i>	XX-0-BRNU-2017-02653

404.	<i>Dipsacus fullonum</i>	XX-0-BRNU-2017-02650
405.	<i>Dipsacus laciniatus</i>	XX-0-BRNU-2017-02651
406.	<i>Knautia arvensis</i>	XX-0-BRNU-2017-02659
407.	<i>Knautia macedonica</i>	XX-0-BRNU-2017-02701
408.	<i>Lomelosia caucasica</i>	XX-0-BRNU-2017-02663
409.	<i>Lomelosia graminifolia</i>	XX-0-BRNU-2017-02709
410.	<i>Scabiosa canescens</i>	XX-0-BRNU-2017-02703
411.	<i>Scabiosa lucida</i>	XX-0-BRNU-2017-02706
412.	<i>Scabiosa ochroleuca</i>	XX-0-BRNU-2017-02708
413.	<i>Succisa pratensis</i>	XX-0-BRNU-2017-02712

DRYOPTERIDACEAE

414.	<i>Arachniodes aristata</i> G	XX-0-BRNU-2017-03412
415.	<i>Cyrtomium falcatum</i> G	XX-0-BRNU-2017-03413
416.	<i>Dryopteris dilatata</i>	XX-0-BRNU-2017-03420
417.	<i>Dryopteris filix-mas</i>	XX-0-BRNU-2017-03416
418.	<i>Polystichum aculeatum</i>	XX-0-BRNU-2017-03425
419.	<i>Polystichum setiferum</i>	XX-0-BRNU-2017-03427
420.	<i>Rumohra adiantiformis</i> G	CL-0-M-1990/2345

CL; Chile, IX. Reg. de los Lagos, Prov. Valdivia, between Enco and Choshuenco, street to Choshuenco Volcano, app. 39°30'S, app. 120 m, coll. E. Bayer; 39°54.8'S 72°08.8'W

ELAEAGNACEAE

421.	<i>Hippophaë rhamnoides</i>	XX-0-BRNU-2017-03438
------	-----------------------------	----------------------

EUPHORBIACEAE

422.	<i>Euphorbia amygdaloides</i>	AT-0-GZU-161089
	AT; Sankt Redegund, Novy Stein, Steirisches Randgebirge; ex BG Graz; 47°10.2'N 15°28.6'E	
423.	<i>Euphorbia exigua</i>	XX-0-BRNU-2017-03542
424.	<i>Euphorbia lathyris</i>	XX-0-BRNU-2017-03546
425.	<i>Euphorbia marginata</i>	XX-0-BRNU-2017-03590
426.	<i>Euphorbia seguieriana</i>	XX-0-BRNU-2017-03558

FABACEAE

427.	<i>Astragalus cicer</i>	XX-0-BRNU-2017-03635
428.	<i>Astragalus glycyphyllos</i>	XX-0-BRNU-2017-03637

429.	<i>Baptisia australis</i>	XX-0-BRNU-2017-03640
430.	<i>Cercis siliquastrum</i>	XX-0-BRNU-2017-03657
431.	<i>Chamaecytisus supinus</i>	DE-0-BRNU-2018-07294
	DE; Gleisdorf, Wetzawinkel 5 km südost von Gleisdorf; 350 msm; ex: BG Graz; 47°05'N 15°46.1'E	
432.	<i>Chamaecytisus virescens</i>	XX-0-BRNU-2017-03661
433.	<i>Galega officinalis</i>	XX-0-BRNU-2017-03669
434.	<i>Genista sagittalis</i>	XX-0-BRNU-2017-03681
435.	<i>Genista tinctoria</i>	XX-0-BRNU-2017-03683
436.	<i>Glycine max</i>	XX-0-BRNU-2017-03688
437.	<i>Glycyrrhiza echinata</i>	XX-0-BRNU-2017-03689
438.	<i>Glycyrrhiza glabra</i>	XX-0-BRNU-2017-03690
439.	<i>Indigofera tinctoria</i>	XX-0-BRNU-2017-03698
440.	<i>Lablab purpureus</i>	XX-0-BRNU-2017-03699
441.	<i>Laburnum anagyroides</i>	XX-0-BRNU-2017-03701
442.	<i>Lathyrus latifolius</i>	XX-0-BRNU-2017-03704
443.	<i>Lathyrus niger</i>	XX-0-BRNU-2017-03706
444.	<i>Lathyrus pratensi</i>	XX-0-BRNU-2017-03714
445.	<i>Lathyrus sylvestris</i>	XX-0-BRNU-2017-03716
446.	<i>Lathyrus tuberosus</i>	XX-0-BRNU-2017-03717
447.	<i>Lathyrus vernus</i>	XX-0-BRNU-2017-03720
448.	<i>Lotus maritimus</i>	XX-0-BRNU-2017-03725
449.	<i>Lotus tenuis</i>	XX-0-BRNU-2017-03727
450.	<i>Lotus tenuis</i>	CZ-0-BRNU-2017-07118
	CZ; district Břeclav, municipality Sedlec, under the Liščí vrch hill; 48°47.4'N 16°41.6'E	
451.	<i>Lotus tetragonolobus</i>	XX-0-BRNU-2017-03728
452.	<i>Lupinus polyphyllus</i>	CZ-0-BRNU-2017-03731
	CZ; district Brno-venkov, along the road between villages Čebín and Drásov; 49°19.5'N 16°28.5'E	
453.	<i>Medicago sativa</i>	XX-0-BRNU-2017-03735
454.	<i>Melilotus albus</i>	XX-0-BRNU-2017-03737
455.	<i>Ononis arvensis</i>	PL-0-MSTR-12542
	PL; Nowosadecki region, Gródek, ex BG Muenster	
456.	<i>Phaseolus coccineus</i>	XX-0-BRNU-2017-03745
457.	<i>Phaseolus lunatus</i>	XX-0-BRNU-2017-03746
458.	<i>Phaseolus vulgaris</i>	XX-0-BRNU-2017-03747
459.	<i>Rhynchosia precatoria</i> G	XX-0-BRNU-2017-03751

460.	<i>Securigera varia</i>	XX-0-BRNU-2017-03752
461.	<i>Sophora davidii</i>	XX-0-BRNU-2017-03755
462.	<i>Spartium junceum</i>	XX-0-BRNU-2017-03757
463.	<i>Trifolium alpestre</i>	XX-0-BRNU-2017-03760
464.	<i>Trifolium arvense</i>	CZ-0-BRNU-2017-03764
	CZ; district Jindřichův Hradec, municipality Lužnice, square at the centre of the village; 49°03.7'N 14°45.4'E	
465.	<i>Trifolium fragiferum</i>	XX-0-BRNU-2017-03767
466.	<i>Trifolium medium</i>	XX-0-BRNU-2017-03769
467.	<i>Trifolium pannonicum</i>	XX-0-BRNU-2017-03773
468.	<i>Trifolium pratense</i>	XX-0-BRNU-2017-03774
469.	<i>Trigonella caerulea</i>	XX-0-BRNU-2017-03778
470.	<i>Trigonella foenum-graecum</i>	XX-0-BRNU-2017-03779
471.	<i>Vicia cracca</i>	CZ-0-BRNU-2017-03783
	CZ; district Jindřichův Hradec, municipality Dolní Žďár, ex BG Praha, Na Slupi; 46°06'N 14°59.3'E	
472.	<i>Vicia hirsuta</i>	CZ-0-BRNU-2017-07000
	CZ; district Mladá Boleslav, village Žďár-Příhrazy, roadside ditch along the road to Příhrazské skály rocks; 50°31.7'N 15°04.5'E	
473.	<i>Vicia pisiformis</i>	XX-0-BRNU-2017-03792
474.	<i>Vicia sativa</i>	XX-0-BRNU-2017-03793
475.	<i>Vigna mungo</i>	XX-0-BRNU-2017-03803
476.	<i>Vigna unguiculata</i>	XX-0-BRNU-2017-03805
477.	<i>Wisteria sinensis</i>	XX-0-BRNU-2017-07057

FAGACEAE

478.	<i>Castanea sativa</i>	XX-0-BRNU-2017-03808
------	------------------------	----------------------

FUMARIACEAE

479.	<i>Corydalis cava</i>	XX-0-BRNU-2017-04924
------	-----------------------	----------------------

GARRYACEAE

480.	<i>Aucuba japonica</i> G	XX-0-BRNU-2017-03824
------	---------------------------------	----------------------

GENTIANACEAE

- | | | |
|------|-----------------------------|----------------------|
| 481. | <i>Gentiana asclepiadea</i> | XX-0-BRNU-2017-03829 |
| 482. | <i>Gentiana cruciata</i> | XX-0-BRNU-2017-03831 |
| 483. | <i>Gentiana lutea</i> | XX-0-BRNU-2017-03834 |
| 484. | <i>Gentiana macrophylla</i> | XX-0-BRNU-2017-03836 |

GERANIACEAE

- | | | |
|------|--|----------------------|
| 485. | <i>Erodium manescavi</i> | XX-0-BRNU-2017-03845 |
| 486. | <i>Geranium dissectum</i> | XX-0-BRNU-2017-03849 |
| 487. | <i>Geranium macrorrhizum</i> | XX-0-BRNU-2017-03862 |
| 488. | <i>Geranium palustre</i> | CZ-0-BRNU-2016-03852 |
| | CZ; district Hodonín, municipality Dubňany, wetlands 2 km SE from village; 48°54.8'N 17°05.3'E | |
| 489. | <i>Geranium pyrenaicum</i> | XX-0-BRNU-2017-03866 |
| 490. | <i>Geranium renardii</i> | XX-0-BRNU-2017-03868 |
| 491. | <i>Geranium robertianum</i> | XX-0-BRNU-2017-03871 |
| 492. | <i>Geranium rotundifolium</i> | XX-0-BRNU-2017-03865 |
| 493. | <i>Geranium sanguineum</i> | XX-0-BRNU-2017-03872 |
| 494. | <i>Geranium sibiricum</i> | XX-0-BRNU-2017-03873 |
| 495. | <i>Geranium sylvaticum</i> | XX-0-BRNU-2017-03874 |
| 496. | <i>Geranium thunbergii</i> | XX-0-BRNU-2017-03875 |
| 497. | <i>Geranium wlassovianum</i> | XX-0-BRNU-2018-07213 |

GINKGOACEAE

- | | | |
|------|----------------------|----------------------|
| 498. | <i>Ginkgo biloba</i> | XX-0-BRNU-2017-03933 |
|------|----------------------|----------------------|

HEMEROCALLIDACEAE

- | | | |
|------|-------------------------------------|----------------------|
| 499. | <i>Hemerocallis lilioasphodelus</i> | XX-0-BRNU-2017-06809 |
|------|-------------------------------------|----------------------|

HIPPOCASTANACEAE

- | | | |
|------|-------------------------------|----------------------|
| 500. | <i>Aesculus hippocastanum</i> | XX-0-BRNU-2017-06323 |
| 501. | <i>Aesculus parviflora</i> | XX-0-BRNU-2017-06325 |

HYACINTHACEAE

- | | | |
|------|----------------------------|----------------------|
| 502. | <i>Muscari comosum</i> | XX-0-BRNU-2017-00952 |
| 503. | <i>Ornithogalum nutans</i> | XX-0-BRNU-2017-00963 |
| 504. | <i>Scilla bifolia</i> | XX-0-BRNU-2017-01004 |

HYDROPHYLLACEAE

- | | | |
|------|---------------------------------|----------------------|
| 505. | <i>Hydrophyllum canadense</i> | XX-0-BRNU-2017-01578 |
| 506. | <i>Hydrophyllum virginianum</i> | XX-0-BRNU-2017-01579 |
| 507. | <i>Phacelia tanacetifolia</i> | XX-0-BRNU-2017-01605 |
| 508. | <i>Phacelia viscida</i> | XX-0-BRNU-2017-01602 |

HYPERICACEAE

- | | | |
|------|------------------------------|----------------------|
| 509. | <i>Hypericum androsaemum</i> | XX-0-BRNU-2017-04003 |
| 510. | <i>Hypericum hookerianum</i> | XX-0-BRNU-2017-04007 |
| 511. | <i>Hypericum kalmianum</i> | XX-0-BRNU-2017-04009 |
| 512. | <i>Hypericum perforatum</i> | XX-0-BRNU-2017-04015 |
| 513. | <i>Hypericum tetrapterum</i> | XX-0-BRNU-2017-04018 |
| 514. | <i>Hypericum tomentosum</i> | XX-0-BRNU-2018-07319 |

IRIDACEAE

- | | | |
|------|--|----------------------|
| 515. | <i>Freesia laxa</i> G | XX-0-BRNU-2020-07821 |
| 516. | <i>Gladiolus imbricatus</i> | XX-0-BRNU-2017-04037 |
| 517. | <i>Iris domestica</i> | XX-0-BRNU-2017-04047 |
| 518. | <i>Iris ensata</i> 'Aoigata' | XX-0-BRNU-2017-04049 |
| 519. | <i>Iris graminea</i> | XX-0-BRNU-2017-04052 |
| 520. | <i>Iris halophilla</i> | XX-0-BRNU-2017-07164 |
| 521. | <i>Iris pallida</i> | XX-0-BRNU-2017-04054 |
| 522. | <i>Iris sibirica</i> | XX-0-BRNU-2017-04064 |
| 523. | <i>Iris sintenisii</i> | XX-0-BRNU-2017-04066 |
| 524. | <i>Iris spuria</i> ssp. <i>musulmanica</i> | XX-0-BRNU-2017-04070 |
| 525. | <i>Sisyrinchium montanum</i> | XX-0-BRNU-2017-04077 |

JUNCACEAE

- | | | |
|------|-----------------------------|----------------------|
| 526. | <i>Juncus articulatus</i> | XX-0-BRNU-2017-04081 |
| 527. | <i>Juncus bufonius</i> | XX-0-BRNU-2019-07807 |
| 528. | <i>Juncus compressus</i> | XX-0-BRNU-2017-04082 |
| 529. | <i>Juncus conglomeratus</i> | XX-0-BRNU-2017-04083 |
| 530. | <i>Juncus effusus</i> | XX-0-BRNU-2017-04085 |
| 534. | <i>Luzula luzuloides</i> | XX-0-BRNU-2017-04091 |
| 531. | <i>Luzula nivea</i> | XX-0-BRNU-2017-04093 |

532.	<i>Luzula pilosa</i>	AT-0-BRNU-2019-07806
	AT: Steiermark	
533.	<i>Luzula sylvatica</i>	XX-0-BRNU-2017-04094
JUNCAGINACEAE		
534.	<i>Triglochin maritima</i>	XX-0-BRNU-2017-07106
LAMIACEAE		
535.	<i>Betonica officinalis</i>	XX-0-BRNU-2017-04111
536.	<i>Callicarpa japonica</i>	XX-0-BRNU-2017-04122
537.	<i>Caryopteris ×clandonensis</i>	XX-0-BRNU-2017-04123
538.	<i>Clinopodium menthifolium</i> ssp. <i>ascendens</i>	XX-0-BRNU-2017-04132
539.	<i>Clinopodium nepeta</i>	XX-0-BRNU-2017-04131
540.	<i>Clinopodium vulgare</i>	XX-0-BRNU-2017-04133
541.	<i>Dracocephalum renati</i>	XX-0-BRNU-2017-04134
542.	<i>Dracocephalum ruyschiana</i>	XX-0-BRNU-2017-04135
543.	<i>Galeopsis angustifolia</i>	XX-0-BRNU-2017-04146
544.	<i>Hyssopus officinalis</i>	XX-0-BRNU-2017-04152
545.	<i>Lamium album</i>	XX-0-BRNU-2017-04154
546.	<i>Lamium maculatum</i>	XX-0-BRNU-2017-04156
547.	<i>Lavandula angustifolia</i>	XX-0-BRNU-2017-04166
548.	<i>Leonotis leonurus</i>	XX-0-BRNU-2017-04167
549.	<i>Leonurus cardiaca</i>	XX-0-BRNU-2017-04168
550.	<i>Lycopus europaeus</i>	XX-0-BRNU-2017-04170
551.	<i>Lycopus exaltatus</i>	XX-0-BRNU-2017-04172
552.	<i>Marrubium peregrinum</i>	XX-0-BRNU-2017-04174
553.	<i>Marrubium vulgare</i>	XX-0-BRNU-2017-04175
554.	<i>Melissa officinalis</i>	XX-0-BRNU-2017-04176
555.	<i>Melittis melissophyllum</i>	XX-0-BRNU-2017-04177
556.	<i>Mentha longifolia</i>	XX-0-BRNU-2017-04182
557.	<i>Mentha spicata</i>	XX-0-BRNU-2017-04185
558.	<i>Moluccella laevis</i>	XX-0-BRNU-2017-04186
559.	<i>Monarda didyma</i>	XX-0-BRNU-2017-04190
560.	<i>Nepeta ×faassenii</i>	XX-0-BRNU-2017-04193
561.	<i>Nepeta cataria</i>	XX-0-BRNU-2017-04195
562.	<i>Nepeta sibirica</i>	XX-0-BRNU-2017-04202
563.	<i>Ocimum basilicum</i>	XX-0-BRNU-2017-04203

564.	<i>Origanum majorana</i>	XX-0-BRNU-2017-04205
565.	<i>Origanum vulgare</i>	XX-0-BRNU-2017-04206
566.	<i>Origanum vulgare</i> ssp. <i>viridulum</i>	XX-0-BRNU-2017-04210
567.	<i>Perilla frutescens</i> var. <i>crispa</i>	XX-0-BRNU-2017-04212
568.	<i>Phlomis russeliana</i>	XX-0-BRNU-2017-04215
569.	<i>Phlomis tuberosa</i>	XX-0-BRNU-2017-04218
570.	<i>Physostegia virginiana</i>	XX-0-BRNU-2017-04220
571.	<i>Plectranthus oertendahlii</i>	XX-0-BRNU-2017-04227
572.	<i>Plectranthus scutellarioides</i>	XX-0-BRNU-2017-04223
573.	<i>Prunella grandiflora</i>	XX-0-BRNU-2017-04240
574.	<i>Prunella vulgaris</i>	XX-0-BRNU-2017-04243
575.	<i>Pulegium vulgare</i>	XX-0-BRNU-2017-04183
576.	<i>Pycnanthemum flexuosum</i>	XX-0-BRNU-2017-04245
577.	<i>Salvia amplexicaulis</i>	XX-0-BRNU-2017-04252
578.	<i>Salvia glutinosa</i>	XX-0-BRNU-2017-04258
579.	<i>Salvia judaica</i>	XX-0-BRNU-2017-04261
580.	<i>Salvia jurisicii</i>	XX-0-BRNU-2017-04262
581.	<i>Salvia nemorosa</i>	XX-0-BRNU-2017-04263
582.	<i>Salvia officinalis</i>	XX-0-BRNU-2017-04268
583.	<i>Salvia pratensis</i>	XX-0-BRNU-2017-04276
584.	<i>Salvia sclarea</i>	XX-0-BRNU-2017-04279
585.	<i>Salvia splendens</i>	XX-0-BRNU-2017-04280
586.	<i>Salvia transsylvanica</i>	XX-0-BRNU-2017-06903
587.	<i>Salvia verticillata</i>	XX-0-BRNU-2017-04285
588.	<i>Satureja montana</i>	XX-0-BRNU-2017-04291
589.	<i>Scutellaria alpina</i>	XX-0-BRNU-2017-04293
590.	<i>Scutellaria altissima</i>	XX-0-BRNU-2017-04294
591.	<i>Scutellaria baicalensis</i>	XX-0-BRNU-2017-04295
592.	<i>Scutellaria galericulata</i>	XX-0-BRNU-2017-04297
593.	<i>Sideritis montana</i>	HU-0-BRNU-2017-07121
	HU; Rocky grassland on limestone near village Nézsza; ex BG Vácrátot; 47°51.1'N 19°17.4'E	
594.	<i>Stachys alpina</i>	XX-0-BRNU-2017-04301
595.	<i>Stachys byzantina</i>	XX-0-BRNU-2019-07568
596.	<i>Stachys menthifolia</i>	XX-0-BRNU-2017-04305
597.	<i>Stachys palustris</i>	XX-0-BRNU-2017-04306
598.	<i>Stachys recta</i>	XX-0-BRNU-2017-04307

599.	<i>Stachys sylvatica</i>	XX-0-BRNU-2017-06877
600.	<i>Teucrium aureum</i>	XX-0-BRNU-2017-04310
601.	<i>Teucrium botrys</i>	XX-0-BRNU-2017-04311
602.	<i>Teucrium chamaedrys</i>	XX-0-BRNU-2017-04312
603.	<i>Teucrium lucidum</i>	XX-0-BRNU-2017-04316
604.	<i>Teucrium scorodonia</i>	XX-0-BRNU-2017-04319
605.	<i>Thymus pannonicus</i>	XX-0-BRNU-2017-04325
606.	<i>Thymus pulegioides</i>	CZ-0-BRNU-2017-04329

CZ; district Jindřichův Hradec, forest road between villages Lipnice a Radlice; 49°06.9'N 15°19'E

607.	<i>Thymus vulgaris</i>	XX-0-BRNU-2017-04332
------	------------------------	----------------------

LILIACEAE

608.	<i>Lilium regale</i>	XX-0-BRNU-2017-04389
609.	<i>Tricyrtis hirta</i>	XX-0-BRNU-2017-04392
610.	<i>Tulipa kaufmanniana</i>	XX-0-BRNU-2017-04397
611.	<i>Tulipa urumiensis</i>	XX-0-BRNU-2017-04405

LINACEAE

612.	<i>Linum alpinum</i>	XX-0-BRNU-2017-04406
613.	<i>Linum austriacum</i>	XX-0-BRNU-2017-04408
614.	<i>Linum flavum</i>	XX-0-BRNU-2017-04413
615.	<i>Linum lewisii</i> var. <i>lewisii</i>	US-0-BRNU-2017-07026

USA; Utah, Rocky Mountains, Wasatch Range, along Hw. 89, Sunshine Pass, 7500 ft.; ex BG Weinheim; 39°59.5'N 111°29.7'W

616.	<i>Linum narbonense</i>	XX-0-BRNU-2017-04416
617.	<i>Linum usitatissimum</i>	XX-0-BRNU-2017-04419

LOBELIACEAE

618.	<i>Lobelia erinus</i>	XX-0-BRNU-2017-02610
619.	<i>Lobelia inflata</i>	XX-0-BRNU-2017-02612
620.	<i>Lobelia siphilitica</i>	XX-0-BRNU-2017-02608

MAGNOLIACEAE

621.	<i>Magnolia ×soulangiana</i>	XX-0-BRNU-2017-04442
------	------------------------------	----------------------

MALVACEAE

622.	<i>Abelmoschus manihot</i>	XX-0-BRNU-2017-04453
623.	<i>Abutilon theophrasti</i>	XX-0-BRNU-2017-04455
624.	<i>Alcea rosea</i>	XX-0-BRNU-2017-04457
625.	<i>Althaea armeniaca</i>	XX-0-BRNU-2017-04458
626.	<i>Althaea cannabina</i>	XX-0-BRNU-2017-04459
627.	<i>Althaea officinalis</i>	XX-0-BRNU-2019-07455
628.	<i>Gossypium arboreum</i> G	XX-0-BRNU-2017-04473
629.	<i>Hibiscus moscheutos</i>	XX-0-BRNU-2017-07153
630.	<i>Hibiscus syriacus</i>	XX-0-BRNU-2017-04485
631.	<i>Hibiscus trionum</i>	XX-0-BRNU-2017-04489
632.	<i>Malope trifida</i>	XX-0-BRNU-2017-04494
633.	<i>Malva alcea</i>	XX-0-BRNU-2017-04495
634.	<i>Malva sylvestris</i> var. <i>mauritiana</i>	XX-0-BRNU-2018-07317
635.	<i>Malva sylvestris</i> var. <i>sylvestris</i>	XX-0-BRNU-2017-04500

MELANTHIACEAE

636.	<i>Veratrum nigrum</i>	XX-0-BRNU-2017-04554
------	------------------------	----------------------

NYCTAGINACEAE

637.	<i>Mirabilis jalapa</i>	XX-0-BRNU-2017-04648
638.	<i>Mirabilis viscosa</i>	XX-0-BRNU-2017-04647
639.	<i>Oxybaphus nyctagineus</i>	XX-0-BRNU-2017-04650

OLEACEAE

640.	<i>Ligustrum vulgare</i>	XX-0-BRNU-2017-04696
------	--------------------------	----------------------

ONAGRACEAE

641.	<i>Circaea mollis</i>	XX-0-BRNU-2017-04721
642.	<i>Clarkia amoena</i>	US-0-DR-013482
	USA; ex. BG Tech. Uni. Dresden	
643.	<i>Clarkia pulchella</i>	XX-0-BRNU-2017-04724
644.	<i>Clarkia unguiculata</i>	US-0-DR-006892
	USA; ex. BG Tech. Uni. Dresden	
645.	<i>Epilobium angustifolium</i>	CZ-0-BRNU-2017-04729
	CZ; district Jindřichův Hradec, municipality Lipnice, road alongside Mlýnský and Pílský fishponds; 49°06'N 15°18.7'E	

646. *Epilobium dodonaei* XX-0-BRNU-2017-04732
647. *Epilobium hirsutum* CZ-0-BRNU-2017-04731
CZ; district Břeclav, municipality Mikulov, near Janičův vrch quarry;
48°47.5'N 16°41.5'E
648. *Epilobium montanum* CZ-0-BRNU-2018-07382
CZ; district Mladá Boleslav, municipality Debř; 50°26.5'N 14°53.3'E
649. *Oenothera biennis* XX-0-BRNU-2017-04743
650. *Oenothera fruticosa* XX-0-BRNU-2017-04746
651. *Oenothera gaura* XX-0-BRNU-2017-04737
652. *Oenothera rosea* XX-0-BRNU-2017-04742
653. *Oenothera tetragona* XX-0-BRNU-2017-04751

OROBANCHACEAE

654. *Odontites vernus* ssp. *serotinus* CZ-0-BRNU-2017-07171
CZ; district Břeclav, municipality Sedlec, Slanisko u Nesytu inland salt
marsh; 48°46.6'N 16°42.1'E

OXALIDACEAE

655. *Oxalis corniculata* XX-0-BRNU-2017-04877
656. *Oxalis dillenii* XX-0-BRNU-2017-04878

PAEONIACEAE

657. *Paeonia delavayi* XX-0-BRNU-2017-04896
658. *Paeonia officinalis* XX-0-BRNU-2017-04892
659. *Paeonia peregrina* XX-0-BRNU-2017-04899
660. *Paeonia suffruticosa* XX-0-BRNU-2017-04903
661. *Paeonia tenuifolia* XX-0-BRNU-2017-04913

PAPAVERACEAE

662. *Argemone grandiflora* XX-0-BRNU-2017-04920
663. *Argemone mexicana* XX-0-BRNU-2017-04921
664. *Macleaya cordata* XX-0-BRNU-2017-04944
665. *Macleaya microcarpa* XX-0-BRNU-2017-04945
666. *Papaver atlanticum* XX-0-BRNU-2017-04947
667. *Papaver rhoeas* XX-0-BRNU-2017-04958

PHRYMACEAE

668. *Mimulus guttatus* XX-0-BRNU-2017-04978

PHYTOLACCACEAE

669. *Phytolacca acinosa* XX-0-BRNU-2017-04984

PINACEAE

670. *Cedrus atlantica* XX-0-BRNU-2017-05000

PITTOSPORACEAE

671. *Pittosporum tobira* G XX-0-BRNU-2017-05104

PLANTAGINACEAE

672. *Antirrhinum majus* XX-0-BRNU-2017-05110

673. *Digitalis grandiflora* XX-0-BRNU-2018-07277

674. *Digitalis lanata* XX-0-BRNU-2017-05120

675. *Digitalis lutea* XX-0-BRNU-2017-05122

676. *Erinus alpinus* XX-0-BRNU-2017-05125

677. *Globularia bisnagarica* XX-0-BRNU-2017-05131

678. *Gratiola officinalis* XX-0-BRNU-2017-05135

679. *Kickxia elatine* XX-0-BRNU-2017-05141

680. *Kickxia spuria* XX-0-BRNU-2017-05142

681. *Linaria genistifolia* CZ-0-BRNU-2017-05143

CZ; district Břeclav, municipality Mikulov, near Janičův vrch quarry;
48°47.5'N 16°41.5'E

682. *Linaria purpurea* XX-0-BRNU-2017-05144

683. *Linaria repens* XX-0-BRNU-2017-05145

684. *Linaria vulgaris* XX-0-BRNU-2017-05147

685. *Misopates orontium* XX-0-BRNU-2017-05149

686. *Penstemon barbatus* XX-0-BRNU-2017-05151

687. *Penstemon cardinalis* XX-0-BRNU-2017-05153

688. *Penstemon digitalis* XX-0-BRNU-2017-05150

689. *Penstemon hartwegii* XX-0-BRNU-2017-05156

690. *Penstemon hirsutus* XX-0-BRNU-2017-05160

691. *Penstemon newberryi* XX-0-BRNU-2017-05159

692. *Plantago afra* XX-0-BRNU-2017-05161

693. *Plantago altissima* XX-0-BRNU-2017-05164

694.	<i>Plantago coronopus</i>	XX-0-BRNU-2017-05165
695.	<i>Plantago indica</i>	XX-0-BRNU-2017-05170
696.	<i>Plantago lanceolata</i>	XX-0-BRNU-2017-05166
697.	<i>Plantago maritima</i>	XX-0-BRNU-2017-05167
698.	<i>Plantago media</i>	XX-0-BRNU-2017-05162
699.	<i>Plantago sempervirens</i>	XX-0-BRNU-2017-05169
700.	<i>Veronica arvensis</i>	XX-0-BRNU-2017-05193
701.	<i>Veronica caucasica</i>	XX-0-BRNU-2017-05173
702.	<i>Veronica fruticulosa</i>	XX-0-BRNU-2017-05189
703.	<i>Veronica gentianoides</i>	XX-0-BRNU-2017-05190
704.	<i>Veronica incana</i>	XX-0-BRNU-2017-05179
705.	<i>Veronica longifolia</i>	XX-0-BRNU-2017-05180
706.	<i>Veronica officinalis</i>	XX-0-BRNU-2017-05191
707.	<i>Veronica orchidea</i>	XX-0-BRNU-2017-05181
708.	<i>Veronica prostrata</i>	XX-0-BRNU-2017-05196
709.	<i>Veronica spicata</i>	AT-0-BRNU-2017-05182
	AT; Niederosterreich, district Hollabrunn, Obernalb bei Retz; 48°44.9'N 15°56.4'E	
710.	<i>Veronica teucrium</i>	XX-0-BRNU-2017-05187
711.	<i>Veronica urticifolia</i>	XX-0-BRNU-2017-05198
712.	<i>Veronicastrum virginicum</i>	XX-0-BRNU-2017-06924

PLUMBAGINACEAE

713.	<i>Armeria maritima</i>	XX-0-BRNU-2017-05207
714.	<i>Gonolimon tataricum</i>	XX-0-BRNU-2017-05219
715.	<i>Limonium gmelinii</i>	XX-0-BRNU-2017-05221
716.	<i>Limonium gougetianum</i>	XX-0-BRNU-2017-05222
717.	<i>Limonium vulgare</i>	XX-0-BRNU-2017-05226

POACEAE

718.	<i>Achnatherum virescens</i>	XX-0-BRNU-2017-05464
719.	<i>Aegilops triuncialis</i>	XX-0-BRNU-2017-05234
720.	<i>Agrostis gigantea</i>	XX-0-BRNU-2017-05240
721.	<i>Andropogon gerardi</i>	XX-0-BRNU-2017-05248
722.	<i>Anthoxanthum odoratum</i>	XX-0-BRNU-2017-05250
723.	<i>Avena byzantina</i>	XX-0-BRNU-2017-05258
724.	<i>Avena nuda</i>	XX-0-BRNU-2017-05260

725.	<i>Bothriochloa ischaemum</i>	XX-0-BRNU-2017-07104
726.	<i>Bouteloua curtipendula</i>	XX-0-BRNU-2017-05272
727.	<i>Bouteloua gracilis</i>	XX-0-BRNU-2017-07073
728.	<i>Brachypodium pinnatum</i>	XX-0-BRNU-2017-05275
729.	<i>Brachypodium sylvaticum</i>	XX-0-BRNU-2017-05276
730.	<i>Briza maxima</i>	XX-0-BRNU-2017-05278
731.	<i>Briza media</i>	XX-0-BRNU-2017-05279
732.	<i>Bromus erectus</i>	XX-0-BRNU-2017-05285
733.	<i>Bromus squarrosus</i>	XX-0-BRNU-2017-05293
734.	<i>Calamagrostis arundinacea</i>	XX-0-BRNU-2017-05299
735.	<i>Chasmanthium latifolium</i>	XX-0-BRNU-2017-05402
736.	<i>Coix lacryma-jobi</i>	XX-0-BRNU-2017-05304
737.	<i>Dactylis polygama</i>	XX-0-BRNU-2017-05312
738.	<i>Deschampsia cespitosa</i>	XX-0-BRNU-2017-05317
739.	<i>Digitaria sanguinalis</i>	XX-0-BRNU-2017-05319
740.	<i>Eleusine coracana</i>	XX-0-BRNU-2019-07598
741.	<i>Eragrostis minor</i>	XX-0-BRNU-2017-05334
742.	<i>Eragrostis tef</i>	XX-0-BRNU-2017-05336
743.	<i>Festuca arundinacea</i>	XX-0-BRNU-2017-05340
744.	<i>Festuca brevipila</i>	CZ-0-BRNU-2017-05342
	CZ; district Jindřichův Hradec, municipality Bednářeček; 49°12.5'N 15°09'E	
745.	<i>Festuca filiformis</i>	CZ-0-BRNU-2019-07596
	CZ; district Jindřichův Hradec, Jarošov nad Nežárkou municipality, quarry in Nekrasín; 49°12.9'N 15°04.1'E	
746.	<i>Festuca heterophylla</i>	XX-0-BRNU-2017-05351
747.	<i>Festuca ovina</i>	XX-0-BRNU-2017-05353
748.	<i>Festuca pallens</i>	XX-0-BRNU-2017-05355
749.	<i>Festuca pratensis</i>	CZ-0-BRNU-2019-07469
	CZ; district Jindřichův Hradec, Jarošov nad Nežárkou municipality, quarry in Nekrasín; 49°12.9'N 15°04.1'E	
750.	<i>Festuca psammophila</i>	XX-0-BRNU-2017-05361
751.	<i>Festuca pseudodalmatica</i>	XX-0-BRNU-2017-07174
752.	<i>Festuca rupicola</i>	XX-0-BRNU-2017-07125
753.	<i>Festuca valesiaca</i>	XX-0-BRNU-2017-05371
754.	<i>Helictotrichon pratense</i>	XX-0-BRNU-2017-05380
755.	<i>Holcus lanatus</i>	XX-0-BRNU-2017-05385
756.	<i>Hordelymus europaeus</i>	XX-0-BRNU-2017-05387

757.	<i>Hordeum bulbosum</i>	XX-0-BRNU-2017-05390
758.	<i>Koeleria glauca</i>	XX-0-BRNU-2017-05408
759.	<i>Koeleria macrantha</i>	XX-0-BRNU-2017-05410
760.	<i>Koeleria pyramidata</i>	XX-0-BRNU-2017-05411
761.	<i>Lolium mairei</i>	XX-0-BRNU-2017-05352
762.	<i>Lolium temulentum</i>	XX-0-BRNU-2017-05418
763.	<i>Melica altissima</i>	XX-0-BRNU-2017-05419
764.	<i>Melica ciliata</i>	XX-0-BRNU-2017-05420
765.	<i>Melica nutans</i>	CZ-0-BRNU-2019-07602
	CZ; district Jindřichův Hradec, municipality Bednárec, Malý obecní rybník fishpond, 2 km E from village; 49°11.4'N 15°07.5'E	
766.	<i>Melica transsilvanica</i>	XX-0-BRNU-2017-05423
767.	<i>Miscanthus sinensis</i>	XX-0-BRNU-2017-05430
768.	<i>Molinia caerulea</i>	XX-0-BRNU-2017-05432
769.	<i>Molinia caerulea</i> 'Variegata'	XX-0-BRNU-2017-05433
770.	<i>Panicum virgatum</i>	XX-0-BRNU-2017-05445
771.	<i>Pennisetum alopecuroides</i>	XX-0-BRNU-2017-05448
772.	<i>Pennisetum purpureum</i>	XX-0-BRNU-2017-05452
773.	<i>Phleum phleoides</i>	XX-0-BRNU-2017-05460
774.	<i>Phleum pratense</i>	XX-0-BRNU-2017-05462
775.	<i>Phragmites australis</i>	XX-0-BRNU-2017-05463
776.	<i>Poa chaixii</i>	XX-0-BRNU-2017-05475
777.	<i>Poa compressa</i>	XX-0-BRNU-2017-05472
778.	<i>Poa nemoralis</i>	XX-0-BRNU-2017-05478
779.	<i>Sesleria argentea</i>	XX-0-BRNU-2017-05493
780.	<i>Sesleria heufleriana</i>	XX-0-BRNU-2017-05495
781.	<i>Sesleria nitida</i>	XX-0-BRNU-2017-05496
782.	<i>Setaria verticillata</i>	CZ-0-BRNU-2017-05502
	CZ; district Břeclav, municipality Sedlec; 48°47'N 16°41'E	
783.	<i>Setaria viridis</i>	CZ-0-BRNU-2017-05503
	CZ; district Břeclav, municipality Sedlec; 48°47'N 16°41'E	
784.	<i>Spodiopogon sibiricus</i>	XX-0-BRNU-2017-05507
785.	<i>Stipa arabica</i>	XX-0-BRNU-2017-05508
786.	<i>Stipa brandisii</i>	XX-0-BRNU-2017-05509
787.	<i>Stipa bromoides</i>	XX-0-BRNU-2017-05510
788.	<i>Stipa calamagrostis</i>	XX-0-BRNU-2017-05511
789.	<i>Stipa capillata</i>	XX-0-BRNU-2017-05512

790.	<i>Stipa dasyphylla</i>	XX-0-BRNU-2017-05517
791.	<i>Stipa eriocalis</i>	XX-0-BRNU-2017-05520
792.	<i>Stipa pennata</i>	XX-0-BRNU-2017-05522
793.	<i>Stipa pulcherrima</i>	XX-0-BRNU-2017-05524
794.	<i>Stipa sibirica</i>	XX-0-BRNU-2017-05525
795.	<i>Stipa tirsia</i>	XX-0-BRNU-2017-05526
796.	<i>Thinopyrum elongatum</i>	XX-0-BRNU-2017-05326
797.	<i>Zuloagaea bulbosa</i>	XX-0-BRNU-2017-05442

POLEMONIACEAE

798.	<i>Collomia heterophylla</i>	XX-0-BRNU-2017-05556
799.	<i>Collomia linearis</i>	XX-0-BRNU-2017-05557
800.	<i>Gilia achilleifolia</i>	XX-0-BRNU-2017-05559
801.	<i>Gilia capitata</i> USA; ex BG Hamburg	US-0-HBG-2013-F-215
802.	<i>Gilia tricolor</i>	XX-0-BRNU-2017-05561
803.	<i>Phlox paniculata</i>	XX-0-BRNU-2017-05563
804.	<i>Polemonium caeruleum</i>	XX-0-BRNU-2017-05571

POLYGONACEAE

805.	<i>Fallopia convolvulus</i>	XX-0-BRNU-2017-05587
806.	<i>Fallopia dumetorum</i>	XX-0-BRNU-2017-05586
807.	<i>Oxyria digyna</i> IT; Vale Urtier, Cogne, Aosta valley; 45°36.8'N 7°20.4'E	IT-0-U-2009BL00619
808.	<i>Persicaria virginiana</i>	XX-0-BRNU-2017-05597
809.	<i>Rheum rhaponticum</i>	XX-0-BRNU-2017-05606
810.	<i>Rumex crispus</i> CZ; district Jindřichův Hradec, municipality Slavonice, at the train station; 48°59.6'N 15°20.9'E	CZ-0-BRNU-2017-05612
811.	<i>Rumex hydrolapathum</i>	XX-0-BRNU-2017-05615
812.	<i>Rumex sanguineus</i>	XX-0-BRNU-2017-05623
813.	<i>Rumex scutatus</i>	XX-0-BRNU-2017-05622

POLYPODIACEAE

814.	<i>Davallia solida</i> var. <i>pyxidata</i> G	XX-0-BRNU-2017-03362
815.	<i>Microsorium musifolium</i> G	XX-0-BRNU-2017-05641
816.	<i>Nephrolepis exaltata</i> 'Whitmannii' G	XX-0-BRNU-2017-03366

817.	<i>Phlebodium aureum</i> 'Glaucum' G	XX-0-BRNU-2017-05630
818.	<i>Phymatosorus pustulatus</i> G	XX-0-BRNU-2017-05644
819.	<i>Polypodium interjectum</i>	XX-0-BRNU-2017-05646
820.	<i>Polypodium vulgare</i>	XX-0-BRNU-2017-05638
821.	<i>Tectaria incisa</i> G	XX-0-BRNU-2017-06572
822.	<i>Tectaria prolifera</i> G	XX-0-BRNU-2017-06570

PORTULACACEAE

823.	<i>Portulaca oleracea</i>	XX-0-BRNU-2017-05669
------	---------------------------	----------------------

PRIMULACEAE

824.	<i>Lysimachia barystachys</i>	XX-0-BRNU-2017-05698
825.	<i>Lysimachia punctata</i>	XX-0-BRNU-2017-05704
826.	<i>Lysimachia vulgaris</i>	XX-0-BRNU-2017-05697
827.	<i>Primula veris</i>	XX-0-BRNU-2017-05720

PTERIDACEAE

828.	<i>Adiantum hispidulum</i> G	XX-0-BRNU-2017-00080
829.	<i>Adiantum peruvianum</i> G	XX-0-BRNU-2017-00075
830.	<i>Adiantum trapeziforme</i> G	XX-0-BRNU-2018-07182
831.	<i>Hemionitis rotundifolia</i> G	XX-0-BRNU-2017-00089

RANUNCULACEAE

832.	<i>Aconitum lycoctonum</i>	XX-0-BRNU-2017-05748
833.	<i>Actaea europaea</i>	XX-0-BRNU-2017-05758
834.	<i>Actaea rubra</i>	XX-0-BRNU-2017-05753
835.	<i>Actaea spicata</i>	XX-0-BRNU-2017-05755
836.	<i>Anemone cylindrica</i>	XX-0-BRNU-2017-06985
837.	<i>Anemone hupehensis</i>	XX-0-BRNU-2017-05770
838.	<i>Anemone sylvestris</i>	XX-0-BRNU-2017-05774
839.	<i>Aquilegia atrata</i>	XX-0-BRNU-2017-05782
840.	<i>Aquilegia canadensis</i>	XX-0-BRNU-2017-05784
841.	<i>Aquilegia dinarica</i>	XX-0-BRNU-2017-05786
842.	<i>Aquilegia vulgaris</i>	XX-0-BRNU-2017-05781
843.	<i>Clematis alpina</i>	XX-0-BRNU-2017-05798
844.	<i>Clematis integrifolia</i>	XX-0-BRNU-2017-05802
845.	<i>Clematis koreana</i>	XX-0-BRNU-2017-05795

846.	<i>Clematis recta</i>	XX-0-BRNU-2017-07050
847.	<i>Clematis tangutica</i>	XX-0-BRNU-2017-05800
848.	<i>Clematis viticella</i>	XX-0-BRNU-2017-05808
849.	<i>Consolida ajacis</i>	XX-0-BRNU-2017-05817
850.	<i>Eranthis hyemalis</i>	XX-0-BRNU-2017-05826
851.	<i>Helleborus foetidus</i>	XX-0-BRNU-2017-05828
852.	<i>Ranunculus acris</i>	XX-0-BRNU-2017-05858
853.	<i>Ranunculus auricomus</i> agg.	XX-0-BRNU-2017-05878
854.	<i>Ranunculus bulbosus</i>	XX-0-BRNU-2017-05862
855.	<i>Ranunculus lanuginosus</i>	XX-0-BRNU-2017-05866
856.	<i>Ranunculus polyanthemos</i>	XX-0-BRNU-2017-05872
857.	<i>Thalictrum aquilegifolium</i>	XX-0-BRNU-2017-05881
858.	<i>Thalictrum flavum</i>	XX-0-BRNU-2017-05882
859.	<i>Thalictrum foetidum</i>	XX-0-BRNU-2017-05884
860.	<i>Thalictrum lucidum</i>	XX-0-BRNU-2017-05886
861.	<i>Thalictrum minus</i>	XX-0-BRNU-2017-05887
862.	<i>Thalictrum speciosissimum</i>	XX-0-BRNU-2017-05885
863.	<i>Trollius altissimus</i>	XX-0-BRNU-2017-06870

RHAMNACEAE

864.	<i>Frangula alnus</i>	XX-0-BRNU-2017-05906
865.	<i>Paliurus spina-christi</i>	XX-0-BRNU-2017-05908

ROSACEAE

866.	<i>Agrimonia eupatoria</i>	XX-0-BRNU-2017-05917
867.	<i>Agrimonia pilosa</i>	XX-0-BRNU-2017-05920
868.	<i>Agrimonia procera</i>	XX-0-BRNU-2017-05921
869.	<i>Alchemilla mollis</i>	XX-0-BRNU-2017-05927
870.	<i>Chaenomeles speciosa</i> 'Alba'	XX-0-BRNU-2017-06043
871.	<i>Cotoneaster acutifolius</i>	XX-0-BRNU-2017-05955
872.	<i>Cotoneaster adpressus</i>	XX-0-BRNU-2017-06001
873.	<i>Cotoneaster ambiguus</i>	XX-0-BRNU-2017-05994
874.	<i>Cotoneaster coriaceus</i>	XX-0-BRNU-2017-05997
875.	<i>Cotoneaster dammeri</i>	XX-0-BRNU-2017-05945
876.	<i>Cotoneaster divaricatus</i>	XX-0-BRNU-2017-05967
877.	<i>Cotoneaster frigidus</i>	XX-0-BRNU-2017-05974
878.	<i>Cotoneaster horizontalis</i>	XX-0-BRNU-2017-05988

879.	<i>Cotoneaster multiflorus</i>	XX-0-BRNU-2017-05996
880.	<i>Cotoneaster pangiensis</i>	XX-0-BRNU-2017-05993
881.	<i>Cotoneaster salicifolius</i>	XX-0-BRNU-2017-05977
882.	<i>Crataegus coccinea</i>	XX-0-BRNU-2017-06007
883.	<i>Crataegus monogyna</i>	XX-0-BRNU-2017-06005
884.	<i>Cydonia oblonga</i>	XX-0-BRNU-2017-06008
885.	<i>Drymocallis rupestris</i>	XX-0-BRNU-2017-06010
886.	<i>Duchesnea indica</i>	XX-0-BRNU-2017-06011
887.	<i>Exochorda racemosa</i>	XX-0-BRNU-2017-06013
888.	<i>Filipendula rubra</i>	XX-0-BRNU-2017-06022
889.	<i>Filipendula ulmaria</i>	XX-0-BRNU-2019-07467
890.	<i>Filipendula vulgaris</i>	XX-0-BRNU-2017-06025
891.	<i>Geum bulgaricum</i>	XX-0-BRNU-2017-06032
892.	<i>Geum mole</i>	XX-0-BRNU-2017-06036
893.	<i>Geum rivale</i>	XX-0-BRNU-2017-06037
894.	<i>Geum urbanum</i>	XX-0-BRNU-2017-06039
895.	<i>Gillenia trifoliata</i>	XX-0-BRNU-2017-06041
896.	<i>Physocarpus opulifolius</i>	XX-0-BRNU-2017-06060
897.	<i>Potentilla argentea</i>	XX-0-BRNU-2017-06067
898.	<i>Potentilla arguta</i>	XX-0-BRNU-2017-06967
899.	<i>Potentilla aurea</i>	XX-0-BRNU-2017-06071
900.	<i>Potentilla gracilis</i> var. <i>pulcherrima</i>	XX-0-BRNU-2017-06091
901.	<i>Potentilla grandiflora</i>	XX-0-BRNU-2017-06083
902.	<i>Potentilla inclinata</i>	XX-0-BRNU-2017-06081
903.	<i>Potentilla nepalensis</i>	XX-0-BRNU-2017-06086
904.	<i>Potentilla norvegica</i>	XX-0-BRNU-2017-06063
905.	<i>Potentilla recta</i>	XX-0-BRNU-2017-06090
906.	<i>Prunus dulcis</i>	XX-0-BRNU-2017-06101
907.	<i>Prunus laurocerasus</i>	XX-0-BRNU-2017-06114
908.	<i>Prunus spinosa</i>	XX-0-BRNU-2017-06125
909.	<i>Prunus spinosa</i> ssp. <i>fruticans</i>	XX-0-BRNU-2017-06130
910.	<i>Pyracantha coccinea</i>	XX-0-BRNU-2017-06132
911.	<i>Rhodotypos scandens</i>	XX-0-BRNU-2017-06139
912.	<i>Rosa canina</i>	XX-0-BRNU-2017-06142
913.	<i>Rosa elliptica</i>	XX-0-BRNU-2017-06149
914.	<i>Rosa gallica</i>	XX-0-BRNU-2017-06143
915.	<i>Rosa hugonis</i>	XX-0-BRNU-2017-06145

916.	<i>Rosa majalis</i>	XX-0-BRNU-2017-06150
917.	<i>Rosa maximowicziana</i>	XX-0-BRNU-2017-06151
918.	<i>Rosa multiflora</i>	CZ-0-BRNU-2017-06152
	CZ; Brno, Žabovřesky city district, on the banks of Svatka river; 49°12.5'N 16°33.6'E	
919.	<i>Rosa pendulina</i>	XX-0-BRNU-2017-06154
920.	<i>Rosa rugosa</i>	XX-0-BRNU-2017-06157
921.	<i>Rosa sericea</i>	XX-0-BRNU-2017-06159
922.	<i>Rosa spinosissima</i>	XX-0-BRNU-2017-06168
923.	<i>Rubus phoenicolasius</i>	XX-0-BRNU-2017-06175
924.	<i>Sanguisorba canadensis</i>	XX-0-BRNU-2017-06177
925.	<i>Sanguisorba menziesii</i>	XX-0-BRNU-2017-06179
926.	<i>Sanguisorba minor</i>	XX-0-BRNU-2017-06178
927.	<i>Sanguisorba officinalis</i>	XX-0-BRNU-2017-06176
928.	<i>Sorbus caloneura</i>	XX-0-BRNU-2017-06188
929.	<i>Spiraea chamaedryfolia</i>	XX-0-BRNU-2017-06200

RUBIACEAE

930.	<i>Asperula tinctoria</i>	XX-0-BRNU-2017-06212
931.	<i>Galium album</i>	XX-0-BRNU-2017-06218
932.	<i>Galium boreale</i>	XX-0-BRNU-2017-06224
933.	<i>Galium intermedium</i>	XX-0-BRNU-2017-06229
934.	<i>Galium sylvaticum</i>	XX-0-BRNU-2017-07152
935.	<i>Rubia tinctorum</i>	XX-0-BRNU-2018-07280

RUTACEAE

936.	<i>Citrus trifoliata</i>	XX-0-BRNU-2017-06264
937.	<i>Ptelea trifoliata</i>	XX-0-BRNU-2017-06278
938.	<i>Ruta graveolens</i>	XX-0-BRNU-2017-06279
939.	<i>Skimmia japonica</i>	XX-0-BRNU-2017-06282
940.	<i>Zanthoxylum americanum</i>	XX-0-BRNU-2017-06287

SAMBUCACEAE

941.	<i>Sambucus ebulus</i>	XX-0-BRNU-2017-00095
------	------------------------	----------------------

SAPINDACEAE

942. *Cardiospermum halicacabum* XX-0-BRNU-2017-06327
943. *Xanthoceras sorbifolium* XX-0-BRNU-2017-06331

SAXIFRAGACEAE

944. *Boykinia major* XX-0-BRNU-2017-06347
945. *Heuchera xbrizoides* XX-0-BRNU-2017-06350
946. *Heuchera americana* XX-0-BRNU-2017-06352
947. *Heuchera himalayensis* XX-0-BRNU-2017-06351
948. *Heuchera micrantha* 'Palace Purple' XX-0-BRNU-2017-06353
949. *Heuchera richardsoni* XX-0-BRNU-2017-06358
950. *Heuchera villosa* XX-0-BRNU-2018-07297
951. *Tellima grandiflora* XX-0-BRNU-2017-06394

SCHISANDRACEAE

952. *Schisandra chinensis* XX-0-BRNU-2017-06434

SCHIZAEACEAE

953. *Anemia phyllitidis* G XX-0-BRNU-2017-06436

SCROPHULARIACEAE

954. *Scrophularia nodosa* XX-0-BRNU-2017-06406
955. *Scrophularia vernalis* XX-0-BRNU-2017-06410
956. *Verbascum chaixii* ssp. *austriacum* XX-0-BRNU-2017-06412
957. *Verbascum densiflorum* XX-0-BRNU-2017-06415
958. *Verbascum nigrum* XX-0-BRNU-2017-06418
959. *Verbascum phoeniceum* XX-0-BRNU-2017-06421
960. *Verbascum thapsus* XX-0-BRNU-2017-06425

SOLANACEAE

961. *Datura ferox* XX-0-BRNU-2017-06454
962. *Datura stramonium* XX-0-BRNU-2017-06458
963. *Lycium barbarum* XX-0-BRNU-2017-06461
964. *Nicandra physalodes* XX-0-BRNU-2017-06464
965. *Nicotiana alata* XX-0-BRNU-2017-06466
966. *Nicotiana langsdorfii* XX-0-BRNU-2017-06471
967. *Nicotiana rustica* XX-0-BRNU-2017-06475

968.	<i>Nicotiana sylvestris</i>	XX-0-BRNU-2017-06477
969.	<i>Nicotiana tabacum</i>	XX-0-BRNU-2017-06478
970.	<i>Petunia ×atkinsiana</i>	XX-0-BRNU-2017-06484
971.	<i>Solanum aethiopicum</i>	XX-0-BRNU-2017-06504
972.	<i>Solanum dulcamara</i>	CZ-0-BRNU-2016-06506

CZ; district Hodonín, municipality Dubňany, wetlands 2 km SE from village; 48°54.8'N 17°05.3'E

SPARGANIACEAE

973.	<i>Sparganium erectum</i>	XX-0-BRNU-2017-06587
------	---------------------------	----------------------

STAPHYLEACEAE

974.	<i>Staphylea pinnata</i>	XX-0-BRNU-2017-06530
------	--------------------------	----------------------

TAXACEAE

975.	<i>Taxus baccata</i>	XX-0-BRNU-2017-06554
976.	<i>Torreya nucifera</i>	XX-0-BRNU-2017-06563

THELYPTERIDACEAE

977.	<i>Thelypteris dentata</i> G	XX-0-BRNU-2019-07809
978.	<i>Thelypteris patens</i> G	XX-0-BRNU-2018-07394

THYMELAEACEAE

979.	<i>Daphne alpina</i>	XX-0-BRNU-2017-06576
------	----------------------	----------------------

TYPHACEAE

980.	<i>Typha angustifolia</i>	XX-0-BRNU-2017-06589
981.	<i>Typha latifolia</i>	XX-0-BRNU-2017-06590
982.	<i>Typha laxmannii</i>	XX-0-BRNU-2017-06591
983.	<i>Typha minima</i>	XX-0-BRNU-2017-06592

URTICACEAE

984.	<i>Parietaria officinalis</i>	XX-0-BRNU-2017-06600
985.	<i>Urtica dioica</i>	CZ-0-BRNU-2017-06614

CZ; Brno, Bráfova street, allotment garden next to Svratka river; 49°12.3'N 16°34.1'E

VALERIANACEAE

- | | | |
|------|------------------------------|----------------------|
| 986. | <i>Patrinia gibbosa</i> | XX-0-BRNU-2017-02698 |
| 987. | <i>Valeriana officinalis</i> | XX-0-BRNU-2017-07123 |
| 988. | <i>Valerianella locusta</i> | XX-0-BRNU-2017-02728 |

VERBENACEAE

- | | | |
|------|---|----------------------|
| 989. | <i>Lantana camara</i> G | XX-0-BRNU-2017-06622 |
| 990. | <i>Verbena bonariensis</i> | XX-0-BRNU-2017-06626 |
| 991. | <i>Verbena hastata</i> | XX-0-BRNU-2017-06630 |
| 992. | <i>Verbena officinalis</i> | XX-0-BRNU-2017-06627 |
| 993. | <i>Verbena urticifolia</i> | XX-0-BRNU-2017-06628 |
| 994. | <i>Vitex negundo</i> var. <i>cannabifolia</i> | XX-0-BRNU-2017-06631 |

VIBURNACEAE

- | | | |
|------|--------------------------------|----------------------|
| 995. | <i>Viburnum lantana</i> | XX-0-BRNU-2017-00104 |
| 996. | <i>Viburnum opulus</i> | XX-0-BRNU-2017-00108 |
| 997. | <i>Viburnum rhytidophyllum</i> | XX-0-BRNU-2017-00119 |

VIOLACEAE

- | | | |
|-------|-------------------------|----------------------|
| 998. | <i>Viola elatior</i> | XX-0-BRNU-2017-06641 |
| 999. | <i>Viola mirabilis</i> | XX-0-BRNU-2017-06646 |
| 1000. | <i>Viola prionantha</i> | XX-0-BRNU-2017-06654 |

VITACEAE

- | | | |
|-------|------------------------------------|----------------------|
| 1001. | <i>Ampelopsis aconitifolia</i> | XX-0-BRNU-2017-06670 |
| 1002. | <i>Parthenocissus tricuspidata</i> | XX-0-BRNU-2017-06686 |
| 1003. | <i>Vitis coignetiae</i> | XX-0-BRNU-2017-06699 |

ZYGOPHYLLACEAE

- | | | |
|-------|----------------------------|----------------------|
| 1004. | <i>Tribulus terrestris</i> | XX-0-BRNU-2017-06862 |
| 1005. | <i>Zygophyllum fabago</i> | XX-0-BRNU-2019-07794 |

DESIDERATA 2019–2020

BOTANICAL GARDEN
FACULTY OF SCIENCE
MASARYK UNIVERSITY
Kotlářská 2
CZ – 611 37 Brno
Czech Republic

You can order the seeds also by e-mail: zahrada@sci.muni.cz.

Your order should reach us on the prepared order form before May 1, 2020.

Please, limit your order to a maximum of 20 items.

By ordering seeds, you agree to comply with the *Convention of Biological Diversity (Rio de Janeiro 1992)* and *Nagoya Protocol on Access to Genetic Resources and the Fair and Equitable Sharing of Benefits Arising from their Utilization to the Convention on Biological Diversity (Nagoya 2010)*.

YOUR ADDRESS:

1.	11.
2.	12.
3.	13.
4.	14.
5.	15.
6.	16.
7.	17.
8.	18.
9.	19.
10.	20.