

INDEX SEMINUM 2020–2021

M U N I Botanical
S C I Garden

BOTANICAL GARDEN
FACULTY OF SCIENCE, MASARYK UNIVERSITY
KOTLÁŘSKÁ 2
CZ – 611 37 BRNO
CZECH REPUBLIC

Tel.: +420 549 495 660, e-mail: zahrada@sci.muni.cz, www.sci.muni.cz/bot_zahr

BOTANICAL GARDEN OF FACULTY OF SCIENCE OF MASARYK UNIVERSITY IN BRNO

The Botanical Garden of Faculty of Science of Masaryk University in Brno was founded in 1922 by Professor Josef Podpěra. The garden has continued to grow and develop since that time. During reconstruction of the garden in 1995–96, new greenhouses were built. At the present time we have a collection of about 4 000 taxa, 1850 taxa in greenhouses and 2 200 taxa outdoors.

1. The outdoor plant collection includes the Plant System (0.3 ha) in front of the greenhouses. In the Plant System a variety of species is shown by families; 85 families and 1 500 species of vascular plants are grown here.
2. You can see samples of South Moravian vegetation and flora as follows: alluvial meadows and forests, oak and oak-hornbeam forests, non-forest xerothermophilous vegetation on limestone, serpentine or loess, submontane beech and spruce forests and sand dune flora. The area of this part is 0.4 ha. You can admire trees and shrubs from the temperate zone of Japan and China, Caucasus and Siberia, or from the Balkans and the Mediterranean. The rockeries and roof garden contain montane and subalpine species from the high mountains of Europe and North America.
3. The new greenhouses are a system of five tunnel-like structures with the largest one situated in the middle (max. height 10.5 m, area 1 200 m²). The greenhouses cover is made of a double layer of polyacrylamide.

The greenhouses contain:

- Tropical collection with *Victoria cruziana*
- Collection of ferns and cycads
- Subtropical collection with evergreen shrubs and trees and with *Wollemia nobilis*
- Collections of *Bromeliaceae*, *Cactaceae* and other succulents
- Grow greenhouse.

The botanical garden is open daily from 9 a. m. to 5 p. m. from April to September and from 9 a. m. to 3 p. m. in winter. Entrance to the garden is free, fee is collected for entrance to greenhouses.

STAFF

Mgr. Magdaléna Chytrá (director), Ing. Anna Novotná (botanist), Mgr. Pavla Vlčková, Jana Šmeralová (collectors)

GEOGRAPHIC AND CLIMATIC INFORMATION

Botanical garden is located near the Brno city centre at approximately 240 above sea level. It's coordinates are 49°12'15"(latitude) and 16°35'50"(longitude). Information on annual precipitation from 2002 to 2019 and on mean monthly and yearly temperature and rainfall from 1961 to 2010 can be found in enclosed climographs.

NOMENCLATURE

1. Kaplan Z., Danihelka J., Chrtěk J. jun., Kirschner J., Kubát K., Štech M. & Štěpánek J. [eds.] (2019): Klíč ke květeně České republiky [Key to the flora of the Czech Republic]. Ed. 2. – Academia, Praha.
2. Plants of the World online, Kew Science, available at <http://www.plantsoftheworldonline.org/>.
3. The Plant List, available at <http://www.theplantlist.org/>.

CONDITIONS

In response to the Convention of Biological Diversity (Rio de Janeiro 1992) and Nagoya Protocol on Access to Genetic Resources and the Fair and Equitable Sharing of Benefits Arising from their Utilization to the Convention on Biological Diversity (Nagoya 2010), the seeds are offered for a use in the fields of research, education, teaching, conservation and development of public botanical gardens. The commercialisation of the seeds, of the resulting plants or of their genetic material is strictly forbidden. Any scientific publication resulting of the use of this material must mention in the acknowledgements the Botanical Garden of Faculty of Science of Masaryk University in Brno.

By ordering seeds, you agree to comply with the above conditions.

We are an IPEN Member, code BRNU.

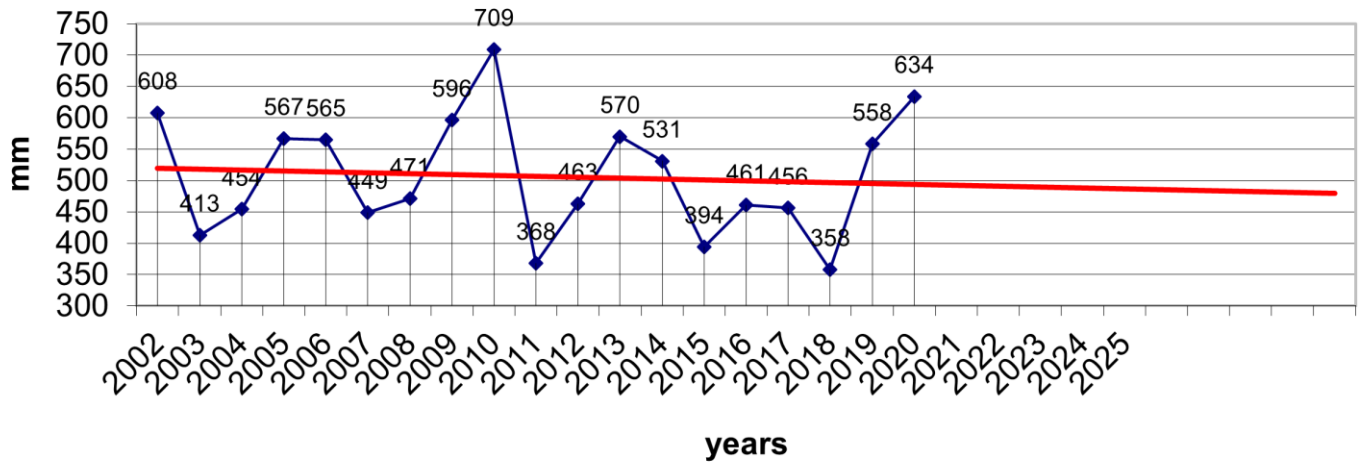
We are registered on CZ 003 Register of scientific institutions entitled to the exemption provided by Article VII, paragraph 6, of the Convention (available at <https://www.cites.org/eng/disc/text.php>).

We are not able to issue phytosanitary certificate with any delivery.

All seeds were collected in the botanical garden in 2020. The seeds are result of open pollination. Hybridization may occur. We cannot guarantee their genetic purity.

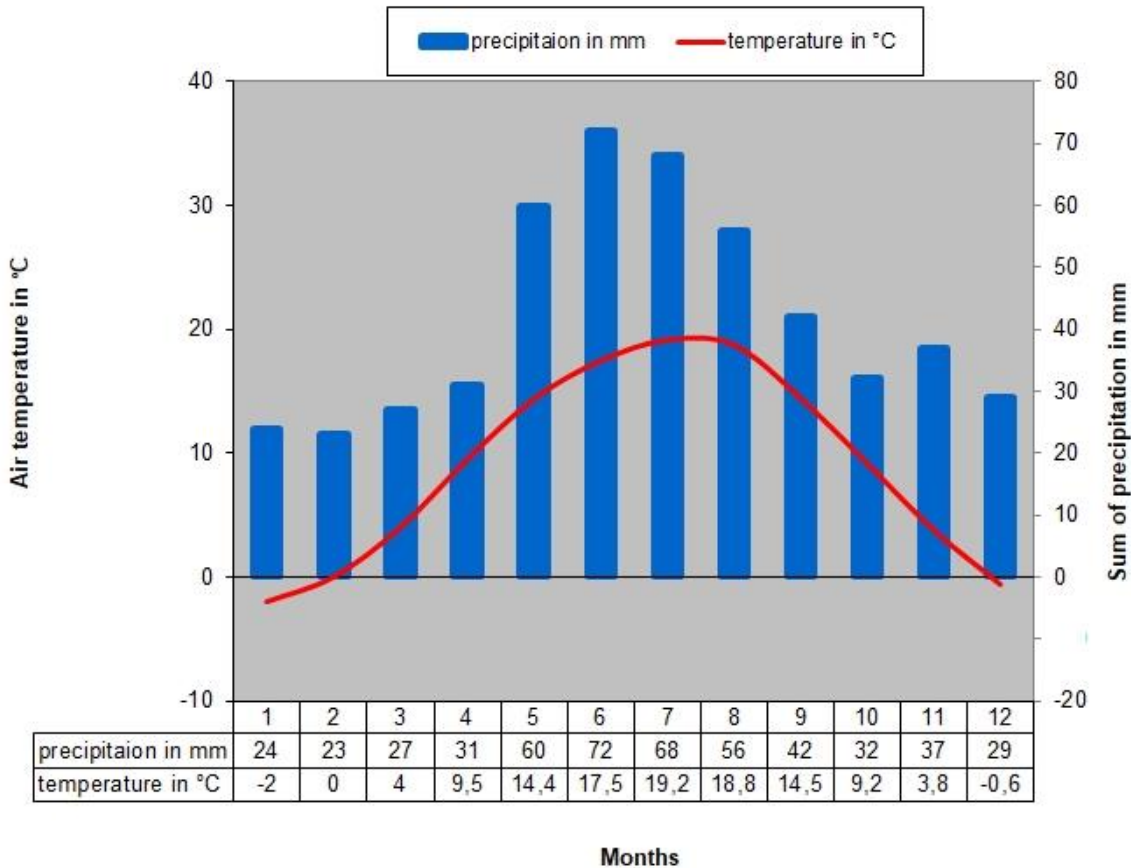
CLIMOGRAPHS

Rainfall in botanical garden



Climate diagramme at the climate station Brno-Tuřany from the period 1961-2010

Average of total annual precipitation: 500 mm, average annual temperature: 9,1 °C



SEEDS COLLECTED FROM PLANTS CULTIVATED OUTDOORS IN THE BOTANICAL GARDEN AND IN GREENHOUSES

G – plants cultivated in greenhouses

ACANTHACEAE

1. *Acanthus hungaricus* XX-0-BRNU-2018-00001

ALISMATACEAE

2. *Alisma plantago-aquatica* XX-0-BRNU-2017-00200

ALLIACEAE

3. *Allium aflatunense* XX-0-BRNU-2017-00288

4. *Allium angulosum* XX-0-BRNU-2017-00291

5. *Allium atropurpureum* XX-0-BRNU-2019-07764

6. *Allium carinatum* XX-0-BRNU-2017-00293

7. *Allium cristophii* XX-0-BRNU-2017-00304

8. *Allium cyathophorum* XX-0-BRNU-2017-06867

9. *Allium ericetorum* XX-0-BRNU-2017-06865

10. *Allium farreri* XX-0-BRNU-2020-08063

11. *Allium fistulosum* XX-0-BRNU-2017-06864

12. *Allium flavum* XX-0-BRNU-2017-00302

13. *Allium karataviense* XX-0-BRNU-2017-00306

14. *Allium macrostemon* XX-0-BRNU-2017-00310

15. *Allium moly* XX-0-BRNU-2017-00308

16. *Allium nutans* XX-0-BRNU-2017-00294

17. *Allium oleraceum* XX-0-BRNU-2017-00312

18. *Allium oreophilum* XX-0-BRNU-2019-07765

19. *Allium roseum* XX-0-BRNU-2017-00315

20. *Allium senescens* XX-0-BRNU-2017-00320

21. *Allium senescens* ssp. *montanum* XX-0-BRNU-2017-00307

22.	<i>Allium siculum</i>	XX-0-BRNU-2017-00339
23.	<i>Allium sphaerocephalon</i>	XX-0-BRNU-2017-00325
24.	<i>Allium tuberosum</i>	XX-0-BRNU-2017-00324
25.	<i>Allium ursinum</i>	XX-0-BRNU-2017-00323
26.	<i>Allium victorialis</i>	XX-0-BRNU-2017-00335

AMARANTHACEAE

27.	<i>Amaranthus blitum</i>	XX-0-BRNU-2021-08122
28.	<i>Amaranthus caudatus</i>	XX-0-BRNU-2017-00230
29.	<i>Amaranthus cruentus</i>	XX-0-BRNU-2017-00225
30.	<i>Amaranthus graecizans</i>	XX-0-BRNU-2017-00227
31.	<i>Amaranthus hybridus</i>	XX-0-BRNU-2017-00228
32.	<i>Amaranthus hypochondriacus</i>	XX-0-BRNU-2017-00229
33.	<i>Amaranthus powelii</i> CZ; district Břeclav, town Mikulov, Janičův vrch quarry; 48° 47'N 16°41.4'E	CZ-0-BRNU-2017-00231
34.	<i>Amaranthus retroflexus</i> CZ; district Břeclav, town Mikulov, Janičův vrch quarry; 48°47.5'N 16°41.5'E	CZ-0-BRNU-2016-07053
35.	<i>Amaranthus tricolor</i>	XX-0-BRNU-2017-00234
36.	<i>Axyris amaranthoides</i>	XX-0-BRNU-2017-00246
37.	<i>Gomphrena globosa</i>	XX-0-BRNU-2017-00262
38.	<i>Gomphrena haageana</i>	XX-0-BRNU-2017-00263

ANACARDIACEAE

39.	<i>Cotinus coggygria</i>	XX-0-BRNU-2017-00379
-----	--------------------------	----------------------

ANTHERICACEAE

40.	<i>Anthericum liliago</i>	XX-0-BRNU-2017-00845
41.	<i>Anthericum ramosum</i>	XX-0-BRNU-2017-00844

APIACEAE

42.	<i>Aethusa cynapium</i>	XX-0-BRNU-2017-00394
43.	<i>Apium graveolens</i>	XX-0-BRNU-2017-00405
44.	<i>Astrantia major</i>	XX-0-BRNU-2017-00407

45.	<i>Athamanta turbith</i>	XX-0-BRNU-2017-00411
46.	<i>Bupleurum falcatum</i>	XX-0-BRNU-2017-00415
47.	<i>Bupleurum fruticosum</i>	XX-0-BRNU-2017-00417
48.	<i>Bupleurum rotundifolium</i>	XX-0-BRNU-2017-00421
49.	<i>Chaerophyllum aromaticum</i> CZ; district Havlíčkův Brod, banks of the Sázava river near the Stvořidla train station; 49°40.1'N 15°19.4'E	CZ-0-BRNU-2019-07474
50.	<i>Chaerophyllum aureum</i>	XX-0-BRNU-2017-00460
51.	<i>Chaerophyllum temulum</i>	XX-0-BRNU-2017-00463
52.	<i>Cnidium dubium</i>	XX-0-BRNU-2017-00424
53.	<i>Cnidium silaifolium</i>	XX-0-BRNU-2017-00425
54.	<i>Eryngium alpinum</i>	XX-0-BRNU-2017-00431
55.	<i>Eryngium amethystinum</i>	XX-0-BRNU-2017-00432
56.	<i>Eryngium bourgatii</i>	XX-0-BRNU-2017-00433
57.	<i>Eryngium caeruleum</i>	XX-0-BRNU-2017-00434
58.	<i>Eryngium campestre</i>	XX-0-BRNU-2017-00435
59.	<i>Eryngium giganteum</i>	XX-0-BRNU-2017-00437
60.	<i>Eryngium planum</i>	XX-0-BRNU-2017-00439
61.	<i>Eryngium variifolium</i>	XX-0-BRNU-2017-00443
62.	<i>Falcaria vulgaris</i>	XX-0-BRNU-2017-00444
63.	<i>Foeniculum vulgare</i>	XX-0-BRNU-2017-00449
64.	<i>Heracleum sphondylium</i>	XX-0-BRNU-2017-00454
65.	<i>Laser trilobum</i>	XX-0-BRNU-2017-00465
66.	<i>Laserpitium latifolium</i>	XX-0-BRNU-2017-00467
67.	<i>Laserpitium siler</i>	XX-0-BRNU-2017-00468
68.	<i>Myrrhis odorata</i>	XX-0-BRNU-2017-00475
69.	<i>Oenanthe javanica</i> 'Flamingo'	XX-0-BRNU-2017-00478
70.	<i>Oenanthe silaifolia</i>	XX-0-BRNU-2017-00477

71.	<i>Orlaya grandiflora</i>	XX-0-BRNU-2017-00479
72.	<i>Pastinaca sativa</i>	XX-0-BRNU-2017-00481
73.	<i>Peucedanum cervaria</i>	XX-0-BRNU-2017-00484
74.	<i>Peucedanum oreoselinum</i>	XX-0-BRNU-2017-06910
75.	<i>Scandix pecten-veneris</i>	XX-0-BRNU-2017-00494
76.	<i>Seseli osseum</i>	XX-0-BRNU-2017-00501
77.	<i>Sium latifolium</i>	XX-0-BRNU-2017-00505

APOCYNACEAE

78.	<i>Amsonia tabernaemontana</i> var. <i>illustris</i>	XX-0-BRNU-2017-00522
79.	<i>Asclepias incarnata</i>	XX-0-BRNU-2017-00526
80.	<i>Periploca graeca</i>	XX-0-BRNU-2017-00567
81.	<i>Periploca sepium</i>	XX-0-BRNU-2017-00569
82.	<i>Vincetoxicum hirundinaria</i>	XX-0-BRNU-2017-00591
83.	<i>Vincetoxicum nigrum</i>	XX-0-BRNU-2017-00594
84.	<i>Vincetoxicum rossicum</i>	XX-0-BRNU-2017-07155

ARACEAE

85.	<i>Arum cylindraceum</i>	XX-0-BRNU-2017-00639
86.	<i>Calla palustris</i>	XX-0-BRNU-2017-00642

ARALIACEAE

87.	<i>Aralia cordata</i>	XX-0-BRNU-2017-00707
88.	<i>Aralia elata</i>	XX-0-BRNU-2017-00709
89.	<i>Aralia racemosa</i>	XX-0-BRNU-2017-00712
90.	<i>Eleutherococcus henryi</i>	XX-0-BRNU-2017-00715
91.	<i>Eleutherococcus senticosus</i>	XX-0-BRNU-2017-00720
92.	<i>Eleutherococcus sieboldianus</i>	XX-0-BRNU-2017-00716

ARISTOLOCHIACEAE

93.	<i>Aristolochia clematitidis</i>	XX-0-BRNU-2017-00810
-----	----------------------------------	----------------------

94.	<i>Aristolochia macrophylla</i>	XX-0-BRNU-2017-00807
ASPARAGACEAE		
95.	<i>Asparagus officinalis</i>	XX-0-BRNU-2017-00850
96.	<i>Asparagus tenuifolius</i>	XX-0-BRNU-2017-00851
97.	<i>Asparagus verticillatus</i>	XX-0-BRNU-2017-00852
98.	<i>Liriope spicata</i>	XX-0-BRNU-2017-00944
ASPHODELACEAE		
99.	<i>Asphodeline liburnica</i>	XX-0-BRNU-2017-06735
100.	<i>Asphodeline lutea</i>	XX-0-BRNU-2017-06737
101.	<i>Asphodelus albus</i>	XX-0-BRNU-2017-06738
102.	<i>Kniphofia uvaria</i>	XX-0-BRNU-2017-06820
ASPENIACEAE		
103.	<i>Asplenium bulbiferum</i> G	XX-0-BRNU-2017-01023
104.	<i>Asplenium ceterach</i>	XX-0-BRNU-2017-01022
105.	<i>Asplenium daucifolium</i> G	XX-0-BRNU-2020-07838
106.	<i>Asplenium nidus</i> G	XX-0-BRNU-2017-01028
107.	<i>Asplenium ruta-muraria</i>	XX-0-BRNU-2017-01019
108.	<i>Asplenium sulcatum</i> G	XX-0-BRNU-2017-01025
109.	<i>Asplenium trichomanes</i>	XX-0-BRNU-2017-01017
110.	<i>Woodwardia radicans</i> G IT; Valle delle Ferriere, 33 km SE from Naples, ex BG Naples (University of Naples, Federico II)	IT-0-BRNU-2020-07836
ASTERACEAE		
111.	<i>Achillea asplenifolia</i>	XX-0-BRNU-2017-01035
112.	<i>Achillea crithmifolia</i>	XX-0-BRNU-2017-01039
113.	<i>Achillea distans</i>	XX-0-BRNU-2017-01040
114.	<i>Achillea millefolium</i>	XX-0-BRNU-2017-01036
115.	<i>Achillea nobilis</i>	XX-0-BRNU-2017-01033

116.	<i>Achillea ochroleuca</i> SK; district Komárno, village Chotín, Chotínské piesky sands; 47°48.7'N 18°12.9'E	SK-0-BRNU-2004-01046
117.	<i>Achillea pannonica</i>	XX-0-BRNU-2017-01048
118.	<i>Achillea pratensis</i>	XX-0-BRNU-2017-01049
119.	<i>Ageratina aromatica</i>	XX-0-BRNU-2017-01031
120.	<i>Ageratum houstonianum</i>	XX-0-BRNU-2017-01032
121.	<i>Ambrosia artemisiifolia</i>	XX-0-BRNU-2017-01055
122.	<i>Antennaria dioica</i>	XX-0-BRNU-2017-01064
123.	<i>Antennaria plantaginea</i>	XX-0-BRNU-2017-01063
124.	<i>Anthemis arvensis</i> CZ; district Jindřichův Hradec, village Dolní Žďár; 49°06'N 14°59.3'E	CZ-0-BRNU-2017-07021
125.	<i>Anthemis austriaca</i>	XX-0-BRNU-2017-01155
126.	<i>Anthemis cotula</i>	XX-0-BRNU-2017-01066
127.	<i>Anthemis tinctoria</i>	XX-0-BRNU-2017-01157
128.	<i>Arctium tomentosum</i>	XX-0-BRNU-2017-01070
129.	<i>Artemisia dracunculus</i>	XX-0-BRNU-2017-01080
130.	<i>Artemisia vulgaris</i>	XX-0-BRNU-2017-01084
131.	<i>Aster alpinus</i>	XX-0-BRNU-2017-01089
132.	<i>Aster amellus</i>	XX-0-BRNU-2017-01090
133.	<i>Aster flaccidus</i>	XX-0-BRNU-2017-01094
134.	<i>Aster himalaicus</i>	XX-0-BRNU-2017-01095
135.	<i>Bidens pilosus</i> ES; Canary Islands, Tenerife	ES-0-BRNU-2018-07324
136.	<i>Buphthalmum salicifolium</i>	XX-0-BRNU-2017-01106
137.	<i>Calendula arvensis</i> ES; Spain, Malaga; 36°43.4'N 4°23.2'E	ES-0-BRNU-2017-01107
138.	<i>Carduus acanthoides</i> CZ; district Pardubice, village Turkovice-Bumbalka, ex BG Praha-Na Slupi; 49°56.8'N, 15.32.3'E	CZ-0-BRNU-2017-01111
139.	<i>Carduus crispus</i>	XX-0-BRNU-2017-01112

140.	<i>Carlina vulgaris</i>	XX-0-BRNU-2017-01118
141.	<i>Catananche caerulea</i>	XX-0-BRNU-2017-01121
142.	<i>Centaurea cyanus</i> CZ; district Prostějov, village Kladky, ex BG Praha-Na Slupi; 49°39'15.5"N 16°49'56.8"E	CZ-0-BRNU-2020-07955
143.	<i>Centaurea jacea</i> ssp. <i>angustifolia</i>	XX-0-BRNU-2017-01126
144.	<i>Centaurea macrocephala</i>	XX-0-BRNU-2017-01130
145.	<i>Centaurea mollis</i>	XX-0-BRNU-2017-01127
146.	<i>Centaurea montana</i> AT; Dachstein-Totes mountains, mountain Angerkogel; ex BG Graz; 47°37.1'N 14°13.7'E	AT-0-GZU-16 1057
147.	<i>Centaurea scabiosa</i>	XX-0-BRNU-2017-01124
148.	<i>Cichorium intybus</i>	XX-0-BRNU-2017-01134
149.	<i>Chondrilla juncea</i>	XX-0-BRNU-2017-01240
150.	<i>Cirsium ×tataricum</i>	XX-0-BRNU-2017-01135
151.	<i>Cirsium canum</i>	XX-0-BRNU-2017-01138
152.	<i>Cirsium heterophyllum</i>	XX-0-BRNU-2017-01141
153.	<i>Cirsium palustre</i>	XX-0-BRNU-2017-01143
154.	<i>Conyza canadensis</i>	XX-0-BRNU-2017-01146
155.	<i>Cosmos bipinnatus</i>	XX-0-BRNU-2017-01151
156.	<i>Crepis biennis</i>	XX-0-BRNU-2017-01162
157.	<i>Crepis pannonica</i> CZ; district Vyškov, village Komořany, steppic grasslands Stepní stráň; 49°11.7'N 16°55.5'E	CZ-0-BRNU-2017-01167
158.	<i>Crepis sibirica</i>	XX-0-BRNU-2017-01170
159.	<i>Doronicum orientale</i>	XX-0-BRNU-2017-01179
160.	<i>Echinacea pallida</i>	XX-0-BRNU-2020-08003
161.	<i>Echinacea purpurea</i>	XX-0-BRNU-2017-01182
162.	<i>Echinops exaltatus</i>	XX-0-BRNU-2017-01183
163.	<i>Echinops ritro</i> subsp. <i>ruthenicus</i>	XX-0-BRNU-2017-01185
164.	<i>Echinops sphaerocephalus</i>	XX-0-BRNU-2017-01186
165.	<i>Erigeron acris</i>	XX-0-BRNU-2017-01193

166. <i>Erigeron compositus</i>	XX-0-BRNU-2019-07470
167. <i>Erigeron speciosus</i>	XX-0-BRNU-2017-01191
168. <i>Eupatorium cannabinum</i>	XX-0-BRNU-2017-01198
169. <i>Gaillardia pulchella</i>	XX-0-BRNU-2017-01202
170. <i>Galatella linosyris</i>	XX-0-BRNU-2017-01206
171. <i>Glebionis coronaria</i>	XX-0-BRNU-2017-01214
172. <i>Helianthus annuus</i>	XX-0-BRNU-2017-01219
173. <i>Heliopsis helianthoides</i>	XX-0-BRNU-2017-01227
174. <i>Helminthotheca echioides</i>	XX-0-BRNU-2019-07535
175. <i>Hieracium maculatum</i>	XX-0-BRNU-2017-01232
176. <i>Hieracium murorum</i>	XX-0-BRNU-2017-01231
177. <i>Hieracium sabaudum</i> CZ; district Uherské Hradiště, village Buchlovice, Buchlov castle; 49°06.4'N 17°18.7'E	CZ-0-BRNU-2017-07110
178. <i>Hieracium schmidtii</i>	XX-0-BRNU-2017-01229
179. <i>Hieracium umbellatum</i>	XX-0-BRNU-2017-01236
180. <i>Inula britannica</i>	XX-0-BRNU-2017-01246
181. <i>Inula ensifolia</i>	XX-0-BRNU-2017-01247
182. <i>Inula germanica</i>	XX-0-BRNU-2017-01248
183. <i>Inula hirta</i>	XX-0-BRNU-2017-01251
184. <i>Inula oculus-christii</i>	XX-0-BRNU-2017-01254
185. <i>Inula salicina</i>	XX-0-BRNU-2017-01255
186. <i>Iva xanthiifolia</i>	XX-0-BRNU-2017-01259
187. <i>Klasea lycopifolia</i>	XX-0-BRNU-2017-01262
188. <i>Klasea radiata</i>	XX-0-BRNU-2017-01264
189. <i>Lactuca perennis</i>	XX-0-BRNU-2017-01266
190. <i>Lactuca serriola</i>	XX-0-BRNU-2017-01268
191. <i>Lapsana communis</i>	XX-0-BRNU-2017-01271

192.	<i>Leibnitzia anandria</i>	XX-0-BRNU-2017-01210
193.	<i>Leibnitzia nepalensis</i>	XX-0-BRNU-2019-07741
194.	<i>Leontodon hispidus</i>	XX-0-BRNU-2017-01272
195.	<i>Leucanthemum vulgare</i>	XX-0-BRNU-2017-01280
196.	<i>Liatris spicata</i>	XX-0-BRNU-2020-07894
197.	<i>Ligularia sibirica</i>	XX-0-BRNU-2020-08065
198.	<i>Madia sativa</i>	XX-0-BRNU-2020-07927
199.	<i>Mycelis muralis</i>	XX-0-BRNU-2017-01295
200.	<i>Picris hieracioides</i>	XX-0-BRNU-2017-01299
201.	<i>Prenanthes purpurea</i>	XX-0-BRNU-2017-01304
202.	<i>Psephellus dealbatus</i>	XX-0-BRNU-2017-01305
203.	<i>Pulicaria dysenterica</i>	XX-0-BRNU-2017-01311
204.	<i>Rudbeckia fulgida</i> 'Goldsturm'	XX-0-BRNU-2017-01317
205.	<i>Rudbeckia laciniata</i>	XX-0-BRNU-2017-01319
206.	<i>Rudbeckia occidentalis</i>	XX-0-BRNU-2017-01320
207.	<i>Scorzonera austriaca</i>	XX-0-BRNU-2017-01326
208.	<i>Scorzonera hispanica</i>	XX-0-BRNU-2017-01327
209.	<i>Senecio doria</i>	XX-0-BRNU-2017-01334
210.	<i>Senecio erucifolius</i>	XX-0-BRNU-2017-01335
211.	<i>Senecio viscosus</i>	XX-0-BRNU-2017-01345
212.	<i>Silphium perfoliatum</i>	XX-0-BRNU-2017-01348
213.	<i>Solidago virgaurea</i>	XX-0-BRNU-2017-01354
214.	<i>Sonchus arvensis</i>	XX-0-BRNU-2017-01357
215.	<i>Sonchus asper</i>	XX-0-BRNU-2017-01356
216.	<i>Sonchus oleraceus</i>	XX-0-BRNU-2017-01358
217.	<i>Tagetes patula</i>	XX-0-BRNU-2017-01366
218.	<i>Tagetes tenuifolia</i>	XX-0-BRNU-2020-08002

219. <i>Tanacetum abrotanifolium</i>	XX-0-BRNU-2017-01378
220. <i>Tanacetum corymbosum</i>	XX-0-BRNU-2017-01370
221. <i>Tanacetum parthenium</i>	XX-0-BRNU-2020-07882
222. <i>Tanacetum vulgare</i>	XX-0-BRNU-2017-01381
223. <i>Telekia speciosa</i>	XX-0-BRNU-2017-01383
224. <i>Tithonia rotundifolia</i>	XX-0-BRNU-2017-01386
225. <i>Tragopogon dubius</i>	XX-0-BRNU-2021-08118
226. <i>Tragopogon pratensis</i> CZ; district Jindřichův Hradec, between villages Číměř and Hradiště; 49°02.1'N 15°04.9'E	CZ-0-BRNU-2017-01391
227. <i>Tragopogon pratensis</i> CZ; district Karlovy Vary, ruins of Klejnštejn castle in military training area Hradiště; 50°21'N 13°08.6'E	CZ-0-BRNU-2017-07020
228. <i>Tripleurospermum inodorum</i>	XX-0-BRNU-2017-01392
229. <i>Xanthium albinum</i>	XX-0-BRNU-2017-01401
230. <i>Xanthium orientale</i>	DE-0-DATH-4819
231. <i>Xanthium spinosum</i>	XX-0-BRNU-2017-01399
232. <i>Xanthium strumarium</i> AT; region Seewinkel, town Apetlon; 36°43.4'N 4°23.2'E	AT-0-WU-0030662
233. <i>Xerochrysum bracteatum</i>	XX-0-BRNU-2017-01403
234. <i>Zinnia elegans</i>	XX-0-BRNU-2017-01406
235. <i>Zinnia peruviana</i> USA; Washington, D. C., Indian Museum, ex BG Weinheim	US-0-BRNU-2020-01409
BALSAMINACEAE	
236. <i>Impatiens balsamina</i>	XX-0-BRNU-2017-01422
237. <i>Impatiens scabrida</i>	XX-0-BRNU-2017-01425
BERBERIDACEAE	
238. <i>Berberis gagnepainii</i> var. <i>lanceifolia</i>	XX-0-BRNU-2017-01476
239. <i>Berberis thunbergii</i> 'Atropurpurea'	XX-0-BRNU-2017-01481
240. <i>Berberis vulgaris</i>	XX-0-BRNU-2017-01485
241. <i>Mahonia aquifolium</i>	XX-0-BRNU-2017-01499

242. Mahonia bealei	XX-0-BRNU-2017-01503
243. Podophyllum hexandrum	XX-0-BRNU-2017-01506
BIGNONIACEAE	
244. Campsis radicans	XX-0-BRNU-2017-01526
245. Catalpa bignonioides	XX-0-BRNU-2017-01528
246. Catalpa ovata	XX-0-BRNU-2017-01530
247. Catalpa speciosa	XX-0-BRNU-2017-01529
BLECHNACEAE	
248. Blechnum brasiliense G	XX-0-BRNU-2017-01546
249. Blechnum gibbum G	XX-0-BRNU-2017-01547
250. Blechnum occidentale G	XX-0-BRNU-2017-01548
BORAGINACEAE	
251. Alkanna orientalis	XX-0-BRNU-2017-01551
252. Anchusa officinalis	XX-0-BRNU-2017-01554
253. Buglossoides arvensis	XX-0-BRNU-2017-01561
254. Buglossoides purpureocaerulea	XX-0-BRNU-2017-01560
255. Cerinthe minor	XX-0-BRNU-2017-01562
256. Cynoglossum amabile	XX-0-BRNU-2020-07972
257. Cynoglossum germanicum	XX-0-BRNU-2017-01565
258. Echium vulgare CZ; Brno, Bohunice city district, in lawn around the tennis court; 49°10.2'N 16°34.5'E	CZ-0-BRNU-2017-01571
259. Iberodes linifolia	XX-0-BRNU-2017-01597
260. Lithospermum officinale	XX-0-BRNU-2017-01584
261. Myosotis arvensis	XX-0-BRNU-2017-01589
262. Myosotis sylvatica	XX-0-BRNU-2017-01592
263. Onosma arenaria RO; distr. Cluj, village Suatu,; ex BG Muenchen - Nymphenburg; 46°46.2'N 23°58.1'E	RO-0-M-2008/1401
264. Pulmonaria officinalis	XX-0-BRNU-2020-08029

BRASSICACEAE

265. <i>Aethionema grandiflorum</i>	XX-0-BRNU-2017-01618
266. <i>Alliaria petiolata</i>	XX-0-BRNU-2017-01622
267. <i>Alyssum montanum</i>	XX-0-BRNU-2017-01624
268. <i>Alyssum murale</i>	XX-0-BRNU-2020-08073
269. <i>Arabis alpina</i>	XX-0-BRNU-2017-01628
270. <i>Arabis turruta</i>	XX-0-BRNU-2021-08125
271. <i>Aurinaria saxatilis</i>	XX-0-BRNU-2017-01640
272. <i>Barbarea vulgaris</i>	XX-0-BRNU-2017-01641
273. <i>Berteroa incana</i>	XX-0-BRNU-2017-01642
274. <i>Bunias orientalis</i>	XX-0-BRNU-2017-01652
275. <i>Capsella bursa-pastoris</i>	XX-0-BRNU-2017-01655
276. <i>Crambe maritima</i>	XX-0-BRNU-2017-01666
277. <i>Diplotaxis tenuifolia</i>	XX-0-BRNU-2017-01672
278. <i>Eruca sativa</i>	XX-0-BRNU-2017-01675
279. <i>Erysimum cheiranthoides</i>	XX-0-BRNU-2017-01677
280. <i>Erysimum cheiri</i>	XX-0-BRNU-2017-07163
281. <i>Fibigia clypeata</i>	XX-0-BRNU-2017-01679
282. <i>Iberis amara</i>	XX-0-BRNU-2017-01687
283. <i>Isatis tinctoria</i>	XX-0-BRNU-2017-01693
284. <i>Lobularia maritima</i>	XX-0-BRNU-2017-01698
285. <i>Moricandia arvensis</i>	XX-0-BRNU-2020-07920
286. <i>Neslia paniculata</i> CZ; district Mladá Boleslav, municipality Chudř, Dubnický rybník fishpond; 50°18'N 15°00.3'E	CZ-0-BRNU-2016-07048
287. <i>Pseudoturritis turruta</i>	XX-0-BRNU-2018-07304
288. <i>Rapistrum perenne</i>	XX-0-BRNU-2017-01708
289. <i>Sinapis alba</i>	XX-0-BRNU-2017-01711
290. <i>Sinapis arvensis</i>	XX-0-BRNU-2017-01710

291. <i>Sisymbrium austriacum</i> ssp. <i>austriacum</i>	XX-0-BRNU-2017-01716
292. <i>Sisymbrium strictissimum</i>	XX-0-BRNU-2020-07891
293. <i>Thlaspi arvense</i>	XX-0-BRNU-2017-01721
294. <i>Turritis glabra</i>	XX-0-BRNU-2017-01722
<i>BUTOMACEAE</i>	
295. <i>Butomus umbellatus</i>	XX-0-BRNU-2017-01916
<i>CACTACEAE</i>	
296. <i>Opuntia phaeacantha</i>	XX-0-BRNU-2017-02409
<i>CALYCANTHACEAE</i>	
297. <i>Calycanthus floridus</i>	XX-0-BRNU-2017-02535
<i>CAMPANULACEAE</i>	
298. <i>Adenophora liliifolia</i>	XX-0-BRNU-2017-02542
299. <i>Asyneuma canescens</i>	XX-0-BRNU-2017-02543
300. <i>Campanula alliariifolia</i>	XX-0-BRNU-2017-02548
301. <i>Campanula carpatica</i>	XX-0-BRNU-2017-02553
302. <i>Campanula cochleariifolia</i>	XX-0-BRNU-2017-02549
303. <i>Campanula collina</i>	XX-0-BRNU-2017-02555
304. <i>Campanula glomerata</i>	XX-0-BRNU-2017-02558
305. <i>Campanula grossekii</i> RO: district Mehedinti., Almajului Mts., Iron Gates, Padina Mica; ex BG Göteborg	RO-0-GB-2017-0485
306. <i>Campanula latifolia</i>	XX-0-BRNU-2017-02562
307. <i>Campanula medium</i>	XX-0-BRNU-2017-02565
308. <i>Campanula persicifolia</i>	XX-0-BRNU-2017-02566
309. <i>Campanula punctata</i>	XX-0-BRNU-2017-02569
310. <i>Campanula rapunculoides</i>	XX-0-BRNU-2017-02576
311. <i>Campanula rapunculus</i>	XX-0-BRNU-2017-02576
312. <i>Campanula rotundifolia</i>	XX-0-BRNU-2017-06901

313. <i>Campanula sarmatica</i>	XX-0-BRNU-2017-02582
314. <i>Campanula tommasiniana</i>	XX-0-BRNU-2017-02588
315. <i>Campanula trachelium</i>	XX-0-BRNU-2017-02589
316. <i>Codonopsis lanceolata</i>	XX-0-BRNU-2017-02596
317. <i>Codonopsis pilosula</i>	XX-0-BRNU-2017-02595
318. <i>Jasione montana</i>	XX-0-BRNU-2017-02602
319. <i>Legousia speculum-veneris</i>	XX-0-BRNU-2017-02607
320. <i>Phyteuma orbiculare</i>	XX-0-BRNU-2017-02613
321. <i>Phyteuma spicatum</i>	XX-0-BRNU-2017-02621
322. <i>Platycodon grandiflorus</i>	XX-0-BRNU-2017-07145

CANNABACEAE

323. <i>Humulus lupulus</i>	XX-0-BRNU-2017-02629
-----------------------------	----------------------

CAPRIFOLIACEAE

324. <i>Leycesteria formosa</i>	XX-0-BRNU-2017-02661
325. <i>Lonicera nigra</i>	XX-0-BRNU-2017-02685
326. <i>Lonicera tangutica</i>	XX-0-BRNU-2017-02665
327. <i>Lonicera xylosteum</i>	XX-0-BRNU-2017-02666
328. <i>Symphoricarpos albus</i>	XX-0-BRNU-2019-07668
329. <i>Symphoricarpos orbiculatus</i>	XX-0-BRNU-2017-02714

CARYOPHYLLACEAE

330. <i>Agrostemma githago</i>	XX-0-BRNU-2017-02733
331. <i>Cerastium tomentosum</i>	XX-0-BRNU-2017-02740
332. <i>Dianthus armeria</i>	XX-0-BRNU-2017-02744
333. <i>Dianthus carthusianorum</i>	XX-0-BRNU-2017-02745
334. <i>Dianthus chinensis</i>	XX-0-BRNU-2017-02771
335. <i>Dianthus furcatus</i>	XX-0-BRNU-2017-02754
336. <i>Dianthus giganteus</i> subsp. <i>croaticus</i>	XX-0-BRNU-2017-02772

337.	<i>Dianthus gratianopolitanus</i>	XX-0-BRNU-2017-02759
338.	<i>Dianthus hyssopifolius</i>	XX-0-BRNU-2017-02769
339.	<i>Dianthus knappii</i>	XX-0-BRNU-2017-02760
340.	<i>Dianthus lumnitzerii</i>	XX-0-BRNU-2017-02761
341.	<i>Dianthus petraeus</i>	XX-0-BRNU-2017-02764
342.	<i>Dianthus serotinus</i> AT; region Niederosterreich; village Oberweiden 48°18.4'N 16°49.8'E	AT-0-BRNU-2019-07816
343.	<i>Dianthus superbus</i>	XX-0-BRNU-2017-06874
344.	<i>Eremogone procera</i>	XX-0-BRNU-2017-02773
345.	<i>Gypsophila acutifolia</i>	XX-0-BRNU-2017-02775
346.	<i>Gypsophila fastigiata</i>	XX-0-BRNU-2017-02777
347.	<i>Gypsophila paniculata</i>	XX-0-BRNU-2017-02778
348.	<i>Gypsophila repens</i>	XX-0-BRNU-2017-02781
349.	<i>Gypsophila tenuifolia</i>	XX-0-BRNU-2017-02774
350.	<i>Lychnis coronaria</i>	XX-0-BRNU-2019-07762
351.	<i>Lychnis flos-cuculi</i>	XX-0-BRNU-2017-02788
352.	<i>Lychnis flos-jovis</i>	XX-0-BRNU-2017-02790
353.	<i>Minuartia laricifolia</i>	XX-0-BRNU-2017-02799
354.	<i>Petrorhagia prolifera</i>	XX-0-BRNU-2017-02807
355.	<i>Petrorhagia saxifraga</i>	XX-0-BRNU-2017-02804
356.	<i>Saponaria ocymoides</i>	XX-0-BRNU-2017-02811
357.	<i>Saponaria officinalis</i>	XX-0-BRNU-2017-02812
358.	<i>Scleranthus perennis</i>	XX-0-BRNU-2017-02816
359.	<i>Silene dioica</i> CZ; district Mladá Boleslav, village Žďár-Příhrazy, roadside ditch along the road to Příhrazské skály rocks; 50°31.7'N 15°04.5'E	CZ-0-BRNU-2017-02825
360.	<i>Silene italica</i>	XX-0-BRNU-2017-02818
361.	<i>Silene latifolia</i> subsp. <i>alba</i>	XX-0-BRNU-2017-02819
362.	<i>Silene noctiflora</i>	XX-0-BRNU-2017-02838

363.	<i>Silene nutans</i>	XX-0-BRNU-2017-02831
364.	<i>Silene otites</i> SK; district Košice, village Drienovské kúpele in Slovak karst; ex BG Košice; 48°37.4'N 20°57.2'E	SK-0-BRNU-2017-02833
365.	<i>Silene saxifraga</i>	XX-0-BRNU-2017-02835
366.	<i>Silene schafta</i>	XX-0-BRNU-2017-02836
367.	<i>Silene viscosa</i>	XX-0-BRNU-2017-02817
368.	<i>Silene vulgaris</i>	XX-0-BRNU-2017-06905
369.	<i>Silene zawadskii</i>	XX-0-BRNU-2017-02841
370.	<i>Viscaria vulgaris</i>	XX-0-BRNU-2017-02850
CELASTRACEAE		
371.	<i>Euonymus alatus</i>	XX-0-BRNU-2017-02861
372.	<i>Euonymus europaeus</i>	XX-0-BRNU-2017-02860
373.	<i>Euonymus nanus</i>	XX-0-BRNU-2017-02868
374.	<i>Euonymus verrucosus</i>	XX-0-BRNU-2017-02869
CHENOPODIACEAE		
375.	<i>Atriplex hortensis</i>	XX-0-BRNU-2017-00238
376.	<i>Chenopodium ficifolium</i>	XX-0-BRNU-2017-00266
377.	<i>Chenopodium giganteum</i>	XX-0-BRNU-2017-00270
378.	<i>Chenopodium hybridum</i> CZ; Brno, Bílá hora hill; 49°11.6'N 16°39.6'E	CZ-0-BRNU-2018-07387
379.	<i>Chenopodium polyspermum</i> CZ; district Břeclav, village Sedlec; 48°47'N 16°41'E	CZ-0-BRNU-2017-00272
380.	<i>Chenopodium urbicum</i>	XX-0-BRNU-2017-00274
381.	<i>Dysphania ambrosioides</i>	XX-0-BRNU-2017-00257
382.	<i>Dysphania schraderiana</i>	XX-0-BRNU-2017-00259
383.	<i>Salsola kali</i>	XX-0-BRNU-2017-00280
CISTACEAE		
384.	<i>Helianthemum grandiflorum</i> subsp. <i>obscurum</i>	XX-0-BRNU-2017-02887

385. Helianthemum grandiflorum subsp. obscurum IT; ex BG Sienna	IT-SIENNA-00510
COLCHICACEAE	
386. Colchicum autumnale	XX-0-BRNU-2017-02890
COMMELINACEAE	
387. Commelina communis	XX-0-BRNU-2017-02902
388. Tradescantia virginiana	XX-0-BRNU-2017-02919
CONVALLARIACEAE	
389. Convallaria majalis	XX-0-BRNU-2017-00869
390. Polygonatum odoratum	XX-0-BRNU-2017-00970
CONVOLVULACEAE	
391. Ipomoea coccinea	XX-0-BRNU-2020-07911
392. Ipomoea nil	XX-0-BRNU-2017-02947
393. Ipomoea purpurea	XX-0-BRNU-2017-02940
394. Ipomoea tricolor	XX-0-BRNU-2017-02937
CORNACEAE	
395. Cornus florida	XX-0-BRNU-2017-02958
396. Cornus mas	XX-0-BRNU-2017-02966
397. Cornus racemosa	XX-0-BRNU-2017-02967
398. Cornus sanguinea	XX-0-BRNU-2017-02968
399. Cornus sericea	XX-0-BRNU-2017-02972
CRASSULACEAE	
400. Hylothelephium maximum	XX-0-BRNU-2017-03060
401. Sedum aizoon	XX-0-BRNU-2017-03097
402. Sedum album	XX-0-BRNU-2017-03095
403. Sedum kamtschaticum	XX-0-BRNU-2017-03111

CUCURBITACEAE

404. *Bryonia dioica* CZ-0-BRNU-2017-03141
CZ; Brno, between buildings on campus of Faculty of Science of Masaryk University on Kotlářská street; 49°12.3'N 16°35.9'E
405. *Cyclanthera brachystachya* XX-0-BRNU-2017-03162
406. *Cyclanthera pedata* XX-0-BRNU-2017-03163
407. *Momordica charantia* XX-0-BRNU-2017-03174

CUPRESSACEAE

408. *Chamaecyparis lawsoniana* 'Alumii' XX-0-BRNU-2017-03190
409. *Platycladus orientalis* XX-0-BRNU-2017-03224

CUSCUTACEAE

410. *Cuscuta europaea* XX-0-BRNU-2017-02936

CYPERACEAE

411. *Carex acutiformis* XX-0-BRNU-2017-03258
412. *Carex alba* XX-0-BRNU-2017-03262
413. *Carex divulsa* XX-0-BRNU-2017-03277
414. *Carex flacca* XX-0-BRNU-2017-03281
415. *Carex grayi* XX-0-BRNU-2017-03284
416. *Carex hartmanii* XX-0-BRNU-2017-03286
417. *Carex leersii* XX-0-BRNU-2017-03294
418. *Carex leporina* XX-0-BRNU-2017-03296
419. *Carex michelii* XX-0-BRNU-2019-07791
420. *Carex muricata* XX-0-BRNU-2017-03304
421. *Carex muskingumensis* XX-0-BRNU-2017-03309
422. *Carex nigra* XX-0-BRNU-2017-03310
423. *Carex otrubae* CZ-0-BRNU-2017-07078
CZ; district Břeclav, village Sedlec; 48°47'N 16°41'E
424. *Carex panicea* CZ-0-BRNU-2016-03315
CZ; district Hodonín, village Dubňany, wetlands 2 km SE from village; 48°54.8'N 17°05.3'E
425. *Carex paniculata* XX-0-BRNU-2017-03314

426.	<i>Carex pendula</i> CZ; district Uherské Hradiště, village Buchlovice, Buchlov castle; 49°06.4'N 17°18.7'E	CZ-0-BRNU-2017-03316
427.	<i>Carex pseudocyperus</i> CZ; district Hodonín, village Dubňany, wetlands 2 km SE from village; 48°54.8'N 17°05.3'E	CZ-0-BRNU-2016-03321
428.	<i>Carex remota</i> CZ; district Hodonín, alder forest near Pánov village 3.5 km NNE from Hodonín town; 48°53.2'N 17°07.9'E	CZ-0-BRNU-2016-03324
429.	<i>Carex spicata</i>	XX-0-BRNU-2017-03329
430.	<i>Carex sylvatica</i>	XX-0-BRNU-2017-03331
431.	<i>Carex vesicaria</i> CZ; district Hodonín, alder forest near Pánov village 3.5 km NNE from Hodonín town; 48°53.2'N 17°07.9'E	CZ-0-BRNU-2016-03335
432.	<i>Schoenoplectus lacustris</i>	XX-0-BRNU-2017-06908
433.	<i>Schoenoplectus tabernaemontani</i>	XX-0-BRNU-2017-03353
434.	<i>Schoenoplectus triqueter</i>	XX-0-BRNU-2017-03354
435.	<i>Scirpoides holoschoenus</i>	XX-0-BRNU-2017-03349
436.	<i>Scirpus radicans</i> CZ; district Jindřichův Hradec, municipality Bednárec, Šedivý rybník fishpond; 49°11.4'N 15°07.4'E	CZ-0-BRNU-2016-03350
CYSTOPTERIDACEAE		
437.	<i>Cystopteris fragilis</i>	XX-0-BRNU-2017-03356
DIOSCOREACEAE		
438.	<i>Dioscorea balcanica</i>	XX-0-BRNU-2017-03382
439.	<i>Dioscorea caucasica</i>	XX-0-BRNU-2017-03383
DIPSACACEAE		
440.	<i>Cephalaria gigantea</i>	XX-0-BRNU-2017-02647
441.	<i>Cephalaria leucantha</i>	XX-0-BRNU-2020-08012
442.	<i>Cephalaria uralensis</i>	XX-0-BRNU-2017-02648
443.	<i>Dipsacus ferox</i>	XX-0-BRNU-2017-02653
444.	<i>Dipsacus fullonum</i>	XX-0-BRNU-2017-02650
445.	<i>Dipsacus laciniatus</i>	XX-0-BRNU-2017-02651
446.	<i>Dipsacus pilosus</i>	XX-0-BRNU-2017-02649
447.	<i>Dipsacus sativus</i>	XX-0-BRNU-2017-02652

448. <i>Knautia arvensis</i>	XX-0-BRNU-2017-02659
449. <i>Knautia drymeia</i>	XX-0-BRNU-2017-02656
450. <i>Knautia macedonica</i>	XX-0-BRNU-2017-02701
451. <i>Lomelosia caucasica</i>	XX-0-BRNU-2017-02663
452. <i>Lomelosia graminifolia</i>	XX-0-BRNU-2017-02709
453. <i>Scabiosa canescens</i>	XX-0-BRNU-2017-02703
454. <i>Scabiosa lucida</i>	XX-0-BRNU-2017-02706
455. <i>Scabiosa ochroleuca</i>	XX-0-BRNU-2017-02708
456. <i>Succisa pratensis</i>	XX-0-BRNU-2017-02712

DRYOPTERIDACEAE

457. <i>Arachniodes aristata</i> G	XX-0-BRNU-2017-03412
458. <i>Cyrtomium falcatum</i> G	XX-0-BRNU-2017-03413
459. <i>Dryopteris dilatata</i>	XX-0-BRNU-2017-03420
460. <i>Dryopteris filix-mas</i>	XX-0-BRNU-2017-03422
461. <i>Polystichum aculeatum</i>	XX-0-BRNU-2017-03425
462. <i>Polystichum setiferum</i>	XX-0-BRNU-2017-03427
463. <i>Polystichum tsus-simense</i> G	XX-0-BRNU-2020-07837
464. <i>Rumohra adiantiformis</i> G	CL-0-M-1990/2345
CL; Chile, IX. Reg. de los Lagos, Prov. Valdivia, between Enco and Choshuenco, street to Choshuenco Volcano, app. 39°30'S, app. 120 m, coll. E. Bayer; 39°54.8'S 72°08.8'W	

ELAEAGNACEAE

465. <i>Hippophaë rhamnoides</i>	XX-0-BRNU-2017-03438
----------------------------------	----------------------

EUPHORBIACEAE

466. <i>Euphorbia abyssinica</i>	XX-0-BRNU-2017-03567
467. <i>Euphorbia cyparissias</i>	XX-0-BRNU-2017-03537
468. <i>Euphorbia dulcis</i>	XX-0-BRNU-2020-08081
469. <i>Euphorbia marginata</i>	XX-0-BRNU-2017-03590

470. <i>Euphorbia myrsinites</i>	XX-0-GZU-YY500112
471. <i>Euphorbia palustris</i>	XX-0-BRNU-2017-03550
472. <i>Euphorbia peplus</i>	XX-0-BRNU-2017-03559
473. <i>Ricinus communis</i>	XX-0-BRNU-2017-03619
FABACEAE	
474. <i>Anthyllis vulneraria</i>	XX-0-BRNU-2017-03632
475. <i>Astragalus cicer</i>	XX-0-BRNU-2017-03635
476. <i>Astragalus glycyphyllos</i>	XX-0-BRNU-2017-03637
477. <i>Baptisia australis</i>	XX-0-BRNU-2017-03640
478. <i>Caragana arborescens</i>	XX-0-BRNU-2017-03648
479. <i>Cercis siliquastrum</i>	XX-0-BRNU-2017-03657
480. <i>Chamaecytisus albus</i>	XX-0-BRNU-2017-06879
481. <i>Chamaecytisus supinus</i> DE; Gleisdorf, Wetzawinkel 5 km SE Gleisdorf; 350 m; ex: BG Graz; 47°05'N 15°46.1'E	DE-0-BRNU-2018-07294
482. <i>Cicer arietinum</i>	XX-0-BRNU-2017-03658
483. <i>Cytisus nigricans</i> AT; Niederösterreich, Eichkogel; 300 m, limestone vegetation; ex. BG München; 48°32.2'N 15°44.2'E	AT-0-M-2012/0611
484. <i>Desmodium canadense</i>	XX-0-BRNU-2017-03664
485. <i>Galega officinalis</i>	XX-0-BRNU-2017-03669
486. <i>Genista sagittalis</i>	XX-0-BRNU-2017-03681
487. <i>Genista tinctoria</i>	XX-0-BRNU-2017-03683
488. <i>Glycine max</i>	XX-0-BRNU-2017-03688
489. <i>Glycyrrhiza echinata</i>	XX-0-BRNU-2017-03689
490. <i>Lablab purpureus</i>	XX-0-BRNU-2017-03699
491. <i>Laburnum anagyroides</i>	XX-0-BRNU-2017-03701
492. <i>Lathyrus aphaca</i>	XX-0-BRNU-2017-03702
493. <i>Lathyrus incurvus</i>	XX-0-BRNU-2017-03703
494. <i>Lathyrus latifolius</i>	XX-0-BRNU-2017-03704

495. <i>Lathyrus niger</i>	XX-0-BRNU-2017-03706
496. <i>Lathyrus pratensis</i>	XX-0-BRNU-2017-03714
497. <i>Lathyrus sylvestris</i>	XX-0-BRNU-2017-03716
498. <i>Lathyrus venetus</i>	XX-0-BRNU-2017-03718
499. <i>Lathyrus vernus</i>	XX-0-BRNU-2017-03720
500. <i>Lotus maritimus</i>	XX-0-BRNU-2017-03725
501. <i>Lotus tetragonolobus</i>	XX-0-BRNU-2017-03728
502. <i>Lupinus albus</i>	IT-0-NCY-19920924G
503. <i>Lupinus angustifolius</i>	XX-0-BRNU-2020-07922
504. <i>Lupinus polyphyllus</i>	XX-0-BRNU-2017-06916
505. <i>Melilotus albus</i>	XX-0-BRNU-2017-03737
506. <i>Onobrychis viciifolia</i> CZ; Brno, Líšeň city district, Stránská skála rock 49°11.4'N 16°40.5'E	CZ-0-BRNU-2017-03741
507. <i>Phaseolus coccineus</i>	XX-0-BRNU-2017-03745
508. <i>Phaseolus lunatus</i>	XX-0-BRNU-2017-03746
509. <i>Phaseolus vulgaris</i>	XX-0-BRNU-2017-03747
510. <i>Securigera varia</i>	XX-0-BRNU-2017-03752
511. <i>Spartium junceum</i>	XX-0-BRNU-2017-03757
512. <i>Trifolium alpestre</i>	XX-0-BRNU-2017-03760
513. <i>Trifolium arvense</i> CZ; district Jindřichův Hradec, village Lužnice, square at the centre of village; 49°03.7'N 14°45.4'E	CZ-0-BRNU-2017-03764
514. <i>Trifolium medium</i>	XX-0-BRNU-2017-03769
515. <i>Trifolium pannonicum</i>	XX-0-BRNU-2017-03773
516. <i>Trifolium pratense</i>	XX-0-BRNU-2017-03774
517. <i>Trifolium rubens</i>	XX-0-BRNU-2018-07311
518. <i>Trigonella caerulea</i>	XX-0-BRNU-2017-03778
519. <i>Trigonella foenum-graecum</i>	XX-0-BRNU-2017-03779

520.	<i>Vicia angustifolia</i> CZ; Praha, Lahovičky city district, ex BG Praha-Na Slupi; 50°00.3'N 14°24'E	CZ-0-BRNU-2017-07019
521.	<i>Vicia cassubica</i>	XX-0-BRNU-2017-03782
522.	<i>Vicia cracca</i> CZ; district Jindřichův Hradec, village Dolní Žďár, ex BG , Praha-Na Slupi; 46°06'N 14°59.3'E	CZ-0-BRNU-2017-03783
523.	<i>Vicia dumetorum</i>	XX-0-BRNU-2017-03784
524.	<i>Vicia pisiformis</i>	XX-0-BRNU-2017-03792
525.	<i>Vicia sativa</i>	XX-0-BRNU-2017-03793
526.	<i>Vicia sepium</i> CZ; district Brno-venkov, village Čebín; 49°18.8'N 16°28.7'E	CZ-0-BRNU-2018-03794
527.	<i>Vicia tenuifolia</i>	XX-0-BRNU-2017-03796
528.	<i>Vigna mungo</i>	XX-0-BRNU-2017-03803
529.	<i>Vigna unguiculata</i>	XX-0-BRNU-2017-03805
530.	<i>Wisteria sinensis</i>	XX-0-BRNU-2017-07057
GARRYACEAE		
531.	<i>Aucuba japonica</i>	XX-0-BRNU-2017-03821
GENTIANACEAE		
532.	<i>Centaurium erythraea</i>	DE-0-OLD-16-047-8810
533.	<i>Gentiana asclepiadea</i>	XX-0-BRNU-2017-03829
534.	<i>Gentiana cruciata</i>	XX-0-BRNU-2017-03831
535.	<i>Gentiana lutea</i>	XX-0-BRNU-2017-03834
536.	<i>Gentiana macrophylla</i>	XX-0-BRNU-2017-03836
GERANIACEAE		
537.	<i>Erodium cicutarium</i>	XX-0-BRNU-2017-03844
538.	<i>Erodium manescavi</i>	XX-0-BRNU-2017-03845
539.	<i>Geranium palustre</i> CZ; district Hodonín, village Dubňany, wetlands 2 km SE from village; 48°54.8'N 17°05.3'E	CZ-0-BRNU-2016-03852
540.	<i>Geranium phaeum</i>	XX-0-BRNU-2017-03850
541.	<i>Geranium pratense</i>	XX-0-BRNU-2017-07124
542.	<i>Geranium pusillum</i>	XX-0-BRNU-2017-03867

543. Geranium pyrenaicum	XX-0-BRNU-2017-03866
544. Geranium robertianum	XX-0-BRNU-2017-03871
545. Geranium rotundifolium	XX-0-BRNU-2017-03865
546. Geranium sanguineum	XX-0-BRNU-2017-03872
547. Geranium sibiricum	XX-0-BRNU-2017-03873
548. Geranium sylvaticum	XX-0-BRNU-2017-03874
HEMEROCALLIDACEAE	
549. Hemerocallis lilioasphodelus	XX-0-BRNU-2017-06809
HYACINTHACEAE	
550. Muscari azureum	XX-0-BRNU-2017-00955
551. Muscari comosum	XX-0-BRNU-2017-00952
552. Scilla bifolia	XX-0-BRNU-2017-01004
553. Scilla pratensis	XX-0-BRNU-2017-01005
HYDROPHYLLACEAE	
554. Phacelia congesta	XX-0-BRNU-2017-01604
555. Phacelia tanacetifolia	XX-0-BRNU-2017-01605
HYPERICACEAE	
556. Hypericum androsaemum	XX-0-BRNU-2017-04003
557. Hypericum hirsutum	XX-0-BRNU-2017-04006
558. Hypericum hookerianum	XX-0-BRNU-2017-04007
559. Hypericum montanum	XX-0-BRNU-2020-07878
560. Hypericum perforatum	XX-0-BRNU-2017-04015
561. Hypericum pulchrum	DE-0-LZ-SYS-5-2011
562. Hypericum tomentosum	XX-0-BRNU-2018-07319
IRIDACEAE	
563. Freesia laxa G	XX-0-BRNU-2020-07821
564. Gladiolus imbricatus	XX-0-BRNU-2017-04037

565. <i>Iris domestica</i>	XX-0-BRNU-2017-04047
566. <i>Iris graminea</i>	XX-0-BRNU-2017-04052
567. <i>Iris halophilla</i>	XX-0-BRNU-2017-07164
568. <i>Iris pseudacorus</i>	XX-0-BRNU-2017-04056
569. <i>Iris sintenisii</i>	XX-0-BRNU-2017-04066
570. <i>Iris spuria</i>	XX-0-BRNU-2017-04068
571. <i>Iris spuria</i> subsp. <i>musulmanica</i>	XX-0-BRNU-2017-04070
572. <i>Sisyrinchium montanum</i>	XX-0-BRNU-2017-04077
573. <i>Sisyrinchium patagonicum</i>	XX-0-BGAT-0015212
574. <i>Sisyrinchium striatum</i>	XX-0-BRNU-2017-04075
575. <i>Tigridia pavonia</i>	XX-0-BRNU-2020-07961
<i>JUNCACEAE</i>	
576. <i>Juncus bulbosus</i> CZ; district Žďár nad Sázavou, fishponds SW from Žďár nad Sázavou town; 49°32.2'N 15°53.6'E	CZ-0-BRNU-2019-07478
577. <i>Juncus compressus</i>	XX-0-BRNU-2017-04082
578. <i>Juncus effusus</i>	XX-0-BRNU-2017-04085
579. <i>Juncus inflexus</i>	XX-0-BRNU-2018-07309
580. <i>Luzula luzuloides</i>	XX-0-BRNU-2017-04091
581. <i>Luzula multiflora</i>	XX-0-BRNU-2017-04092
582. <i>Luzula nivea</i>	XX-0-BRNU-2017-04093
583. <i>Luzula sylvatica</i>	XX-0-BRNU-2017-04094
<i>LAMIACEAE</i>	
584. <i>Ajuga chamaepitys</i>	XX-0-BRNU-2017-04102
585. <i>Ajuga reptans</i>	XX-0-BRNU-2017-04103
586. <i>Ballota nigra</i>	XX-0-BRNU-2017-04110
587. <i>Betonica officinalis</i>	XX-0-BRNU-2017-04111
588. <i>Callicarpa japonica</i>	XX-0-BRNU-2017-04122

589.	<i>Caryopteris ×clandonensis</i>	XX-0-BRNU-2017-04123
590.	<i>Clinopodium menthifolium</i> subsp. <i>ascendens</i>	XX-0-BRNU-2017-04132
591.	<i>Clinopodium vulgare</i>	XX-0-BRNU-2017-04133
592.	<i>Dracocephalum grandiflorum</i>	XX-0-BRNU-2017-04137
593.	<i>Dracocephalum moldavica</i>	XX-0-BRNU-2020-08059
594.	<i>Dracocephalum renati</i>	XX-0-BRNU-2017-04134
595.	<i>Dracocephalum ruyschiana</i>	XX-0-BRNU-2017-04135
596.	<i>Galeobdolon luteum</i>	XX-0-BRNU-2017-04143
597.	<i>Hyssopus officinalis</i>	XX-0-BRNU-2017-04152
598.	<i>Lamium album</i>	XX-0-BRNU-2017-04154
599.	<i>Lamium maculatum</i> CZ; district Havlíčkův Brod, town Světlá nad Sázavou, bank of the Sázava river near the Mrzkovice train station; 49°39.4'N 15°22.4'E	CZ-0-BRNU-2017-04159
600.	<i>Lamium orvala</i>	XX-0-BRNU-2017-04160
601.	<i>Lavandula angustifolia</i>	XX-0-BRNU-2017-04166
602.	<i>Leonurus cardiaca</i>	XX-0-BRNU-2017-04168
603.	<i>Leonurus sibiricus</i>	XX-0-BRNU-2017-04169
604.	<i>Lycopus europaeus</i>	XX-0-BRNU-2017-04170
605.	<i>Lycopus exaltatus</i>	XX-0-BRNU-2017-04172
606.	<i>Marrubium incanum</i>	XX-0-BRNU-2017-04173
607.	<i>Marrubium vulgare</i>	XX-0-BRNU-2017-04175
608.	<i>Melissa officinalis</i>	XX-0-BRNU-2017-04176
609.	<i>Melittis melissophyllum</i>	XX-0-BRNU-2017-04177
610.	<i>Mentha longifolia</i>	XX-0-BRNU-2017-04182
611.	<i>Mentha spicata</i>	XX-0-BRNU-2017-04185
612.	<i>Mentha suaveolens</i> CZ; district Brno-venkov, along the road between villages Čebín and Drásov; 49°19.5'N 16°28.5'E	CZ-0-BRNU-2019-07451
613.	<i>Monarda citriodora</i>	XX-0-BRNU-2019-07771
614.	<i>Monarda didyma</i>	XX-0-BRNU-2017-04190

615.	<i>Monarda fistulosa</i>	XX-0-BRNU-2017-04191
616.	<i>Nepeta caerulea</i>	XX-0-BRNU-2017-04194
617.	<i>Nepeta cataria</i>	XX-0-BRNU-2017-04195
618.	<i>Nepeta nuda</i>	XX-0-BRNU-2017-04199
619.	<i>Ocimum basilicum</i>	XX-0-BRNU-2017-04203
620.	<i>Origanum majorana</i>	XX-0-BRNU-2017-04205
621.	<i>Origanum vulgare</i>	XX-0-BRNU-2017-04206
622.	<i>Origanum vulgare</i> subsp. <i>viridulum</i>	XX-0-BRNU-2017-04210
623.	<i>Perilla frutescens</i> var. <i>crispa</i>	XX-0-BRNU-2017-04212
624.	<i>Phlomis russeliana</i>	XX-0-BRNU-2017-04215
625.	<i>Phlomis tuberosa</i>	XX-0-BRNU-2017-04218
626.	<i>Physostegia virginiana</i>	XX-0-BRNU-2017-04220
627.	<i>Plectranthus scutellarioides</i>	XX-0-BRNU-2017-04222
628.	<i>Prunella</i> × <i>dissecta</i>	XX-0-BRNU-2017-04238
629.	<i>Prunella grandiflora</i>	XX-0-BRNU-2017-04240
630.	<i>Prunella laciniata</i>	XX-0-BRNU-2017-04241
631.	<i>Prunella vulgaris</i>	XX-0-BRNU-2017-04243
632.	<i>Pycnanthemum flexuosum</i>	XX-0-BRNU-2017-04245
633.	<i>Salvia aethiopsis</i>	XX-0-BRNU-2017-04251
634.	<i>Salvia amplexicaulis</i>	XX-0-BRNU-2017-04252
635.	<i>Salvia dumetorum</i> RU; area Podgorenskyi, flumen Don, village Kirpitschi, Kuvschin, K.G. Tkach	RU-0-JENA-7848741
636.	<i>Salvia glutinosa</i>	XX-0-BRNU-2017-04258
637.	<i>Salvia judaica</i>	XX-0-BRNU-2017-04261
638.	<i>Salvia jurisicii</i>	XX-0-BRNU-2017-04262
639.	<i>Salvia nemorosa</i>	XX-0-BRNU-2017-04263
640.	<i>Salvia officinalis</i>	XX-0-BRNU-2020-07888

641.	<i>Salvia pratensis</i>	XX-0-BRNU-2017-04276
642.	<i>Salvia sclarea</i>	XX-0-BRNU-2017-04279
643.	<i>Salvia splendens</i>	XX-0-BRNU-2017-04280
644.	<i>Salvia transsylvanica</i>	XX-0-BRNU-2017-06903
645.	<i>Salvia verticillata</i>	XX-0-BRNU-2017-04285
646.	<i>Satureja hortensis</i>	XX-0-BRNU-2017-04287
647.	<i>Satureja montana</i>	XX-0-BRNU-2017-04291
648.	<i>Satureja spicigera</i>	XX-0-BRNU-2017-04292
649.	<i>Scutellaria alpina</i>	XX-0-BRNU-2017-04293
650.	<i>Scutellaria altissima</i>	XX-0-BRNU-2017-04294
651.	<i>Scutellaria baicalensis</i>	XX-0-BRNU-2017-04295
652.	<i>Sideritis montana</i> HU; Rocky grassland on limestone near village Nézsza; ex BG Vácraót; 47°51.1'N 19°17.4'E	HU-0-BRNU-2017-07121
653.	<i>Stachys alpina</i>	XX-0-BRNU-2017-04301
654.	<i>Stachys byzantina</i>	XX-0-BRNU-2019-07568
655.	<i>Stachys germanica</i>	XX-0-BRNU-2017-04304
656.	<i>Stachys iberica</i> GEO; district Imereti, 344 m; 42°38'59,2" N, 42°38'53,2" E	GE-0-M-2012/2809
657.	<i>Stachys menthifolia</i>	XX-0-BRNU-2017-04305
658.	<i>Stachys palustris</i>	XX-0-BRNU-2017-04306
659.	<i>Stachys recta</i>	XX-0-BRNU-2017-04307
660.	<i>Stachys sylvatica</i>	XX-0-BRNU-2017-06877
661.	<i>Teucrium botrys</i>	XX-0-BRNU-2017-04311
662.	<i>Teucrium chamaedrys</i>	XX-0-BRNU-2017-04312
663.	<i>Teucrium lucidum</i>	XX-0-BRNU-2017-04316
664.	<i>Teucrium scorodonia</i>	XX-0-BRNU-2017-04319
665.	<i>Thymus pannonicus</i>	XX-0-BRNU-2017-04326
666.	<i>Thymus vulgaris</i>	XX-0-BRNU-2017-04332

LILIACEAE

667. *Fritillaria elwesii* XX-0-BRNU-2017-06970
668. *Lilium regale* XX-0-BRNU-2017-04389
669. *Tricyrtis hirta* XX-0-BRNU-2017-04392
670. *Tricyrtis latifolia* XX-0-BRNU-2017-04394
671. *Tulipa kaufmanniana* XX-0-BRNU-2017-04397
672. *Tulipa urumiensis* XX-0-BRNU-2017-04405

LINACEAE

673. *Linum alpinum* XX-0-BRNU-2017-04406
674. *Linum austriacum* XX-0-BRNU-2017-04408
675. *Linum dolomiticum* XX-0-BRNU-2017-04412
676. *Linum flavum* XX-0-BRNU-2017-04413
677. *Linum grandiflorum* XX-0-BRNU-2018-07384
678. *Linum lewisii* var. *lewisii* US-0-BRNU-2017-07026
USA; Utah, Rocky Mountains, Wasatch Range, along Hw. 89, Sunshine Pass, 7500 ft.; ex BG
Weinheim; 39°59.5'N 111°29.7'W
679. *Linum narbonense* XX-0-BRNU-2017-04416
680. *Linum usitatissimum* XX-0-BRNU-2017-04419

LINNAEACEAE

681. *Kolkwitzia amabilis* XX-0-BRNU-2017-04420

LOBELIACEAE

682. *Lobelia siphilitica* XX-0-BRNU-2017-02608

LYGODIACEAE

683. *Lygodium scandens* **G** XX-0-BRNU-2017-06438

MAGNOLIACEAE

684. *Liriodendron tulipifera* XX-0-BRNU-2017-04437
685. *Magnolia ×soulangiana* XX-0-BRNU-2017-04442

MALVACEAE

686. *Abelmoschus manihot* XX-0-BRNU-2017-04453

687.	<i>Abutilon indicum</i>	ES-0-BRNU-2017-07025
688.	<i>Alcea rosea</i>	XX-0-BRNU-2020-08004
689.	<i>Alcea rugosa</i> RU; region Kabardo Balkarskaja Republica	RU-0-BRNU-2020-07935
690.	<i>Althaea armeniaca</i>	XX-0-BRNU-2017-04458
691.	<i>Althaea cannabina</i>	XX-0-BRNU-2017-04459
692.	<i>Althaea officinalis</i>	XX-0-BRNU-2019-07455
693.	<i>Gossypium arboreum</i> G	XX-0-BRNU-2017-04473
694.	<i>Hibiscus syriacus</i>	XX-0-BRNU-2017-04486
695.	<i>Hibiscus trionum</i>	XX-0-BRNU-2017-04489
696.	<i>Kitaibelia vitifolia</i>	XX-0-BRNU-2017-04490
697.	<i>Lavatera thuringiaca</i>	XX-0-BRNU-2017-04492
698.	<i>Lavatera trimestris</i>	XX-0-BRNU-2017-04493
699.	<i>Malva moschata</i>	XX-0-BRNU-2017-04496
700.	<i>Malva sylvestris</i>	XX-0-BRNU-2017-04500
701.	<i>Malva sylvestris</i> var. <i>mauritiana</i>	XX-0-BRNU-2018-07317
702.	<i>Pavonia hastata</i> G	XX-0-BRNU-2021-08120
703.	<i>Pavonia sepium</i> G	XX-0-BRNU-2021-08121
704.	<i>Pavonia spinifex</i> G	XX-0-BRNU-2021-08119
<i>MENISPERMACEAE</i>		
705.	<i>Menispermum dauricum</i>	XX-0-BRNU-2017-04564
<i>MORACEAE</i>		
706.	<i>Broussonetia papyrifera</i>	XX-0-BRNU-2017-04571
<i>NYCTAGINACEAE</i>		
707.	<i>Mirabilis jalapa</i>	XX-0-BRNU-2017-04648
708.	<i>Mirabilis longiflora</i>	XX-0-BRNU-2017-04649
709.	<i>Oxybaphus nyctagineus</i>	XX-0-BRNU-2017-04650

OLEACEAE

710. *Ligustrum vulgare* XX-0-BRNU-2017-04696

ONAGRACEAE

711. *Circaea lutetiana* XX-0-BRNU-2017-07130

712. *Circaea mollis* XX-0-BRNU-2017-04721

713. *Clarkia amoena* US-0-DR-013482
USA; ex. BG Tech. Uni. Dresden

714. *Clarkia unguiculata* US-0-DR-006892
USA; ex. BG Tech. Uni. Dresden

715. *Epilobium angustifolium* CZ-0-BRNU-2017-04729
CZ; district Jindřichův Hradec, road alongside fishponds Mlýnský and Pílský; 49°06'N 15°18.7'E

716. *Epilobium dodonaei* XX-0-BRNU-2017-04732

717. *Epilobium hirsutum* XX-0-BRNU-2017-06875

718. *Oenothera ×braunii* XX-0-BRNU-2017-04741

719. *Oenothera biennis* XX-0-BRNU-2017-04743

720. *Oenothera fallax* XX-0-BRNU-2017-04750

721. *Oenothera fruticosa* XX-0-BRNU-2017-04746

722. *Oenothera odorata* XX-0-BRNU-2017-04749

723. *Oenothera rosea* XX-0-BRNU-2017-04742

724. *Oenothera tetragona* XX-0-BRNU-2017-04751

OROBANCHACEAE

725. *Orobanche hederæ* XX-0-BRNU-2021-08123

726. *Orobanche teucrii* XX-0-BRNU-2017-04869

PAEONIACEAE

727. *Paeonia daurica* subsp. *mlokosewitschii* XX-0-BRNU-2017-04900

728. *Paeonia delavayi* XX-0-BRNU-2017-04896

729. *Paeonia officinalis* XX-0-BRNU-2017-04892

730. *Paeonia tenuifolia* XX-0-BRNU-2017-04913

PAPAVERACEAE

731. <i>Chelidonium majus</i>	XX-0-BRNU-2017-04939
732. <i>Glaucium flavum</i>	XX-0-BRNU-2017-04933
733. <i>Macleaya cordata</i>	XX-0-BRNU-2017-04944
734. <i>Macleaya microcarpa</i>	XX-0-BRNU-2017-04945
735. <i>Papaver alpinum</i>	XX-0-BRNU-2019-07808
736. <i>Papaver atlanticum</i>	XX-0-BRNU-2017-04947
737. <i>Papaver maculosum</i> subsp. <i>austromoravicum</i>	XX-0-BRNU-2017-04951
738. <i>Papaver rhoeas</i>	XX-0-BRNU-2017-04958

PHYLLANTHACEAE

739. <i>Phyllanthus juglandifolius</i> G	XX-0-BRNU-2017-04982
---	----------------------

PHYTOLACCACEAE

740. <i>Phytolacca acinosa</i>	XX-0-BRNU-2017-04984
741. <i>Phytolacca icosandra</i> G	XX-0-BRNU-2018-07302

PINACEAE

742. <i>Abies pinsapo</i>	XX-0-BRNU-2017-04993
743. <i>Cedrus atlantica</i>	XX-0-BRNU-2017-05000
744. <i>Pinus jeffreyi</i>	XX-0-BRNU-2017-05026
745. <i>Pinus nigra</i>	XX-0-BRNU-2017-05035

PLANTAGINACEAE

746. <i>Antirrhinum majus</i>	XX-0-BRNU-2017-05110
747. <i>Digitalis grandiflora</i>	XX-0-BRNU-2018-07277
748. <i>Digitalis lutea</i>	XX-0-BRNU-2017-05122
749. <i>Digitalis purpurea</i>	XX-0-BRNU-2017-05115
750. <i>Erinus alpinus</i>	XX-0-BRNU-2017-05125
751. <i>Globularia bisnagarica</i>	XX-0-BRNU-2017-05131
752. <i>Globularia nudicaulis</i>	XX-0-BRNU-2017-05133

753.	<i>Linaria genistifolia</i> CZ; district Břeclav, town Mikulov, near Janičův vrch quarry; 48°47.5'N 16°41.5'E	CZ-0-BRNU-2017-05143
754.	<i>Linaria purpurea</i>	XX-0-BRNU-2017-05144
755.	<i>Linaria repens</i>	XX-0-BRNU-2017-05145
756.	<i>Linaria vulgaris</i>	CZ-0-BRNU-2020-08045
757.	<i>Microrrhinum minus</i>	XX-0-BRNU-2017-05148
758.	<i>Misopates orontium</i>	XX-0-BRNU-2017-05149
759.	<i>Penstemon digitalis</i>	XX-0-BRNU-2019-07714
760.	<i>Plantago afra</i>	XX-0-BRNU-2017-05161
761.	<i>Plantago altissima</i>	XX-0-BRNU-2017-05164
762.	<i>Plantago coronopus</i>	XX-0-BRNU-2017-05165
763.	<i>Plantago media</i>	XX-0-BRNU-2017-05162
764.	<i>Plantago sempervirens</i>	XX-0-BRNU-2017-05169
765.	<i>Veronica caucasica</i>	XX-0-BRNU-2017-05173
766.	<i>Veronica gentianoides</i>	XX-0-BRNU-2017-05190
767.	<i>Veronica incana</i>	XX-0-BRNU-2017-05179
768.	<i>Veronica longifolia</i>	XX-0-BRNU-2017-05180
769.	<i>Veronica maritima</i>	XX-0-BRNU-2017-05180
770.	<i>Veronica officinalis</i>	XX-0-BRNU-2017-05191
771.	<i>Veronica orchidea</i>	XX-0-BRNU-2017-05181
772.	<i>Veronica persica</i> CZ; Brno, between buildings on campus of Faculty of Science of Masaryk University on Kotlářská street; 49°12.3'N 16°35.9'E	CZ-0-BRNU-2017-05195
773.	<i>Veronica prostrata</i>	XX-0-BRNU-2017-05196
774.	<i>Veronica spicata</i> AT; Niederösterreich, district Hollabrunn, Oberalb bei Retz; 48°44.9'N 15°56.4'E	AT-0-BRNU-2017-05182
775.	<i>Veronica teucrium</i>	XX-0-BRNU-2017-05187
776.	<i>Veronica urticifolia</i>	XX-0-BRNU-2017-05198
777.	<i>Veronicastrum virginicum</i>	XX-0-BRNU-2017-06924

PLUMBAGINACEAE

778. <i>Armeria alpina</i> AT; BG Klagenfurt	AT-0-KL-2017/4201
779. <i>Armeria arenaria</i>	XX-0-BRNU-2017-05211
780. <i>Armeria maritima</i>	XX-0-BRNU-2017-05207
781. <i>Limonium platyphyllum</i>	XX-0-BRNU-2017-05223

POACEAE

782. <i>Achnatherum brandisii</i>	XX-0-BRNU-2017-05509
783. <i>Achnatherum bromoides</i>	XX-0-BRNU-2017-05510
784. <i>Achnatherum calamagrostis</i>	XX-0-BRNU-2017-05511
785. <i>Achnatherum sibiricum</i>	XX-0-BRNU-2017-05525
786. <i>Achnatherum virescens</i>	XX-0-BRNU-2017-05464
787. <i>Aegilops triuncialis</i>	XX-0-BRNU-2017-05234
788. <i>Agrostis gigantea</i>	XX-0-BRNU-2017-05240
789. <i>Andropogon gerardi</i>	XX-0-BRNU-2017-05248
790. <i>Arrhenatherum elatius</i>	XX-0-BRNU-2017-05253
791. <i>Avena strigosa</i>	XX-0-BRNU-2017-05263
792. <i>Avenula pubescens</i>	XX-0-BRNU-2017-05265
793. <i>Bothriochloa ischaemum</i>	XX-0-BRNU-2017-07104
794. <i>Bouteloua curtipendula</i>	XX-0-BRNU-2017-05272
795. <i>Bouteloua gracilis</i>	XX-0-BRNU-2017-07073
796. <i>Brachypodium pinnatum</i>	XX-0-BRNU-2017-05275
797. <i>Brachypodium sylvaticum</i>	XX-0-BRNU-2017-05276
798. <i>Briza maxima</i>	XX-0-BRNU-2017-05278
799. <i>Briza media</i>	XX-0-BRNU-2017-05279
800. <i>Bromus inermis</i> CZ; district Jindřichův Hradec, village Slavonice, train station; 48°59.6'N 15°20.9'E	CZ-0-BRNU-2017-05288
801. <i>Bromus sterilis</i>	XX-0-BRNU-2017-05294
802. <i>Calamagrostis arundinacea</i>	XX-0-BRNU-2017-05298

803.	<i>Calamagrostis varia</i>	XX-0-BRNU-2017-05303
804.	<i>Chasmanthium latifolium</i>	XX-0-BRNU-2017-05402
805.	<i>Coix lacryma-jobi</i>	XX-0-BRNU-2017-05304
806.	<i>Dactylis glomerata</i>	XX-0-BRNU-2017-05311
807.	<i>Dactylis polygama</i>	XX-0-BRNU-2017-05312
808.	<i>Deschampsia cespitosa</i>	XX-0-BRNU-2017-05317
809.	<i>Digitaria sanguinalis</i>	XX-0-BRNU-2017-05319
810.	<i>Festuca amethystina</i>	XX-0-BRNU-2017-05338
811.	<i>Festuca arundinacea</i>	XX-0-BRNU-2017-05340
812.	<i>Festuca brevipila</i> CZ; district Jindřichův Hradec, village Bednářeček; 49°12.5'N 15°09'E	CZ-0-BRNU-2017-05342
813.	<i>Festuca filiformis</i> CZ; district Jindřichův Hradec, village Jarošov nad Nežárkou, quarry in Nekrasín; 49°12.9'N 15°04.1'E	CZ-0-BRNU-2019-07596
814.	<i>Festuca gautieri</i>	XX-0-BRNU-2017-05345
815.	<i>Festuca gigantea</i>	XX-0-BRNU-2017-05348
816.	<i>Festuca heterophylla</i>	XX-0-BRNU-2017-05351
817.	<i>Festuca ovina</i>	XX-0-BRNU-2017-05353
818.	<i>Festuca pallens</i>	XX-0-BRNU-2017-05355
819.	<i>Festuca pratensis</i> CZ; district Jindřichův Hradec, village Jarošov nad Nežárkou, quarry in Nekrasín; 49°12.9'N 15°04.1'E	CZ-0-BRNU-2019-07469
820.	<i>Festuca psammophila</i>	XX-0-BRNU-2017-05361
821.	<i>Festuca pseudodalmatica</i>	XX-0-BRNU-2017-07174
822.	<i>Festuca rupicola</i>	XX-0-BRNU-2017-07125
823.	<i>Festuca tatrae</i>	XX-0-BRNU-2017-05368
824.	<i>Festuca valesiaca</i>	XX-0-BRNU-2017-05371
825.	<i>Festuca versicolor</i>	XX-0-BRNU-2017-05372
826.	<i>Helictotrichon pratense</i>	XX-0-BRNU-2017-05380
827.	<i>Helictotrichon sempervirens</i>	XX-0-BRNU-2017-05381

828.	<i>Holcus lanatus</i>	XX-0-BRNU-2017-05385
829.	<i>Hordelymus europaeus</i>	XX-0-BRNU-2017-05387
830.	<i>Koeleria glauca</i>	XX-0-BRNU-2017-05408
831.	<i>Koeleria macrantha</i>	XX-0-BRNU-2017-05410
832.	<i>Koeleria pyramidata</i>	XX-0-BRNU-2017-05411
833.	<i>Lagurus ovatus</i>	XX-0-BRNU-2017-05412
834.	<i>Lolium mairei</i>	XX-0-BRNU-2017-05352
835.	<i>Lolium temulentum</i>	XX-0-BRNU-2017-05418
836.	<i>Melica altissima</i>	XX-0-BRNU-2017-05419
837.	<i>Melica ciliata</i>	XX-0-BRNU-2017-05420
838.	<i>Melica nutans</i> CZ; district Jindřichův Hradec, village Bednárec, Malý obecní rybník fishpond, 2 km E from village; 49°11.4'N 15°07.5'E	CZ-0-BRNU-2019-07602
839.	<i>Melica transsilvanica</i>	XX-0-BRNU-2017-05423
840.	<i>Miscanthus sinensis</i>	XX-0-BRNU-2017-05430
841.	<i>Molinia caerulea</i>	XX-0-BRNU-2017-05432
842.	<i>Panicum virgatum</i>	XX-0-BRNU-2017-05445
843.	<i>Pennisetum alopecuroides</i>	XX-0-BRNU-2017-05448
844.	<i>Pennisetum purpureum</i>	XX-0-BRNU-2017-05452
845.	<i>Phleum phleoides</i>	XX-0-BRNU-2017-05460
846.	<i>Phleum pratense</i>	XX-0-BRNU-2017-05462
847.	<i>Poa badensis</i>	XX-0-BRNU-2017-05470
848.	<i>Poa bulbosa</i>	XX-0-BRNU-2017-05471
849.	<i>Poa compressa</i>	XX-0-BRNU-2017-05472
850.	<i>Poa nemoralis</i>	XX-0-BRNU-2017-05478
851.	<i>Poa pratensis</i>	XX-0-BRNU-2017-05480
852.	<i>Sesleria argentea</i>	XX-0-BRNU-2017-05493
853.	<i>Sesleria caerulea</i>	XX-0-BRNU-2017-04454

854.	<i>Sesleria heufleriana</i>	XX-0-BRNU-2017-05495
855.	<i>Sesleria nitida</i>	XX-0-BRNU-2017-05496
856.	<i>Sesleria sadleriana</i>	XX-0-BRNU-2017-05497
857.	<i>Setaria pumila</i> CZ; district Břeclav, town Mikulov, near Janičův vrch quarry; 48°47.5'N 16°41,5'E 48°47.5'N 16°41.5'E	CZ-0-BRNU-2017-05501
858.	<i>Setaria viridis</i> CZ; district Břeclav, village Sedlec; 48°47'N 16°41'E	CZ-0-BRNU-2017-05503
859.	<i>Spodiopogon sibiricus</i>	XX-0-BRNU-2017-05507
860.	<i>Stipa arabica</i>	XX-0-BRNU-2017-05508
861.	<i>Stipa capillata</i>	XX-0-BRNU-2017-05512
862.	<i>Stipa eriocaulis</i>	XX-0-BRNU-2017-05520
863.	<i>Stipa pennata</i>	XX-0-BRNU-2017-05522
864.	<i>Stipa pulcherrima</i>	XX-0-BRNU-2017-05524
865.	<i>Stipa tirsia</i>	XX-0-BRNU-2017-05526
866.	<i>Thinopyrum elongatum</i>	XX-0-BRNU-2017-05326
867.	<i>Vulpia bromoides</i>	XX-0-BRNU-2017-05547
868.	<i>Vulpia myuros</i>	XX-0-BRNU-2017-05549
<i>POLEMONIACEAE</i>		
869.	<i>Collomia heterophylla</i>	XX-0-BRNU-2017-05556
870.	<i>Collomia linearis</i>	XX-0-BRNU-2017-05557
871.	<i>Gilia achilleifolia</i>	XX-0-BRNU-2017-05559
872.	<i>Gilia capitata</i> USA; ex BG Hamburg	US-0-HBG-2013-F-215
873.	<i>Gilia squarrosa</i>	XX-0-BRNU-2017-05562
874.	<i>Gilia tricolor</i>	XX-0-BRNU-2017-05561
875.	<i>Polemonium caeruleum</i>	XX-0-BRNU-2017-05571
<i>POLYGONACEAE</i>		
876.	<i>Bistorta officinalis</i>	XX-0-BRNU-2017-05578

877. <i>Oxyria digyna</i> IT; Vale Urtier, Cogne, Aosta valley; 45°36.8'N 7°20.4'E	IT-0-U-2009BL00619
878. <i>Persicaria virginiana</i>	XX-0-BRNU-2017-05597
879. <i>Rheum rhaponticum</i>	XX-0-BRNU-2017-05606
880. <i>Rumex acetosella</i>	XX-0-BRNU-2017-05610
881. <i>Rumex confertus</i>	XX-0-BRNU-2017-05613
882. <i>Rumex hydrolapathum</i>	XX-0-BRNU-2017-05615
883. <i>Rumex patientia</i>	XX-0-BRNU-2017-05619
884. <i>Rumex pulcher</i>	XX-0-BRNU-2017-05620
885. <i>Rumex sanguineus</i>	XX-0-BRNU-2017-05623
886. <i>Rumex scutatus</i>	HR-0-GENT-2006-0393
 <i>POLYPODIACEAE</i>	
887. <i>Davallia solida</i> G	XX-0-BRNU-2017-03361
888. <i>Nephrolepis exaltata</i> G	XX-0-BRNU-2017-03364
889. <i>Nephrolepis exaltata</i> 'Whitmannii' G	XX-0-BRNU-2017-03366
890. <i>Phlebodium aureum</i> 'Glaucum' G	XX-0-BRNU-2017-05630
891. <i>Phymatosorus pustulatus</i> G	XX-0-BRNU-2017-05644
892. <i>Polypodium interjectum</i>	XX-0-BRNU-2017-05646
893. <i>Polypodium vulgare</i>	XX-0-BRNU-2017-05638
894. <i>Tectaria incisa</i> G	XX-0-BRNU-2017-06572
895. <i>Tectaria prolifera</i> G	XX-0-BRNU-2017-06570
 <i>PRIMULACEAE</i>	
896. <i>Lysimachia barystachys</i>	XX-0-BRNU-2017-05698
897. <i>Lysimachia ciliata</i>	XX-0-BRNU-2017-05699
898. <i>Lysimachia punctata</i>	XX-0-BRNU-2017-05704
899. <i>Lysimachia vulgaris</i>	XX-0-BRNU-2017-05697
900. <i>Primula auricula</i>	XX-0-BRNU-2017-05713

901.	<i>Primula japonica</i>	XX-0-BRNU-2017-05718
902.	<i>Primula veris</i>	XX-0-BRNU-2017-05720
<i>PTERIDACEAE</i>		
903.	<i>Adiantum hispidulum</i> G	XX-0-BRNU-2017-00080
904.	<i>Adiantum macrophyllum</i> G	XX-0-BRNU-2017-00081
905.	<i>Adiantum peruvianum</i> G	XX-0-BRNU-2017-00075
906.	<i>Adiantum trapeziforme</i> G	XX-0-BRNU-2018-07182
<i>RANUNCULACEAE</i>		
907.	<i>Aconitum lycoctonum</i>	XX-0-BRNU-2017-05748
908.	<i>Actaea dahurica</i>	XX-0-BRNU-2017-05756
909.	<i>Actaea europaea</i>	XX-0-BRNU-2017-05758
910.	<i>Actaea pachypoda</i>	XX-0-BRNU-2017-05752
911.	<i>Actaea rubra</i>	XX-0-BRNU-2017-05753
912.	<i>Actaea spicata</i>	XX-0-BRNU-2017-05755
913.	<i>Anemone cylindrica</i>	XX-0-BRNU-2017-06985
914.	<i>Anemone hupehensis</i>	XX-0-BRNU-2017-05770
915.	<i>Anemone rivularis</i>	XX-0-BRNU-2017-05772
916.	<i>Anemone sylvestris</i>	XX-0-BRNU-2017-05774
917.	<i>Aquilegia atrata</i>	XX-0-BRNU-2017-05782
918.	<i>Aquilegia dinarica</i>	XX-0-BRNU-2017-05786
919.	<i>Aquilegia olympica</i> UA; ex BG Göttingen	UA-0-NGOET-439
920.	<i>Aquilegia sibirica</i>	XX-0-BRNU-2020-07985
921.	<i>Aquilegia vulgaris</i>	XX-0-BRNU-2017-05781
922.	<i>Clematis alpina</i>	XX-0-BRNU-2017-05798
923.	<i>Clematis flammula</i>	XX-0-BRNU-2017-05815
924.	<i>Clematis glauca</i>	XX-0-BRNU-2017-05794

925. Clematis heracleifolia	XX-0-BRNU-2017-05801
926. Clematis integrifolia	XX-0-BRNU-2017-05802
927. Clematis recta	XX-0-BRNU-2017-07050
928. Clematis virginiana	XX-0-BRNU-2017-05796
929. Clematis vitalba	XX-0-BRNU-2017-05806
930. Consolida ajacis	XX-0-BRNU-2017-05817
931. Delphinium elatum	XX-0-BRNU-2017-05819
932. Eranthis hyemalis	XX-0-BRNU-2017-05825
933. Helleborus foetidus	XX-0-BRNU-2017-05828
934. Pulsatilla grandis	XX-0-BRNU-2017-05849
935. Ranunculus aconitifolius	XX-0-BRNU-2017-05871
936. Ranunculus acris	XX-0-BRNU-2017-05858
937. Ranunculus acris subsp. frieseanus	XX-0-BRNU-2017-05876
938. Ranunculus arvensis	XX-0-BRNU-2017-05874
939. Ranunculus bulbosus	XX-0-BRNU-2017-05862
940. Ranunculus lanuginosus	XX-0-BRNU-2017-05866
941. Ranunculus polyanthemos	XX-0-BRNU-2017-05872
942. Ranunculus sceleratus	XX-0-BRNU-2016-05856
943. Thalictrum aquilegiifolium	XX-0-BRNU-2017-05881
944. Thalictrum flavum	XX-0-BRNU-2017-05882
945. Thalictrum foetidum	XX-0-BRNU-2017-05884
946. Thalictrum lucidum	XX-0-BRNU-2017-05886
947. Thalictrum minus	XX-0-BRNU-2017-05887
948. Thalictrum simplex	XX-0-BRNU-2017-05888
949. Thalictrum speciosissimum	XX-0-BRNU-2017-05885

RESEDACEAE

950. Reseda lutea	XX-0-BRNU-2017-05897
-------------------	----------------------

RHAMNACEAE

951. Frangula alnus	XX-0-BRNU-2017-05906
952. Paliurus spina-christi	XX-0-BRNU-2017-05908
953. Rhamnus cathartica	XX-0-BRNU-2017-05909

ROSACEAE

954. Acaena caesiiglauca	XX-0-BRNU-2017-05915
955. Agrimonia eupatoria	XX-0-BRNU-2017-05917
956. Agrimonia procera	XX-0-BRNU-2017-05921
957. Alchemilla alpina	XX-0-BRNU-2017-05923
958. Amelanchier ovalis	XX-0-BRNU-2017-05934
959. Chaenomeles speciosa 'Alba'	XX-0-BRNU-2017-06043
960. Cotoneaster acutifolius	XX-0-BRNU-2017-05955
961. Cotoneaster adpressus	XX-0-BRNU-2017-06001
962. Cotoneaster ambiguus	XX-0-BRNU-2017-05994
963. Cotoneaster coriaceus	XX-0-BRNU-2017-05997
964. Cotoneaster divaricatus	XX-0-BRNU-2017-05967
965. Cotoneaster frigidus	XX-0-BRNU-2017-05974
966. Cotoneaster horizontalis	XX-0-BRNU-2017-05975
967. Cotoneaster multiflorus	XX-0-BRNU-2017-05996
968. Cotoneaster pangiensis	XX-0-BRNU-2017-05993
969. Crataegus monogyna	XX-0-BRNU-2017-06005
970. Crataegus pinnatifida	XX-0-BRNU-2019-07413
971. Dryas octopetala	XX-0-BRNU-2017-06009
972. Drymocallis arguta	XX-0-BRNU-2017-06967
973. Drymocallis rupestris	XX-0-BRNU-2017-06010
974. Duchesnea indica	XX-0-BRNU-2017-06011
975. Exochorda racemosa	XX-0-BRNU-2017-06013

976.	<i>Filipendula ulmaria</i>	XX-0-BRNU-2017-06021
977.	<i>Filipendula vulgaris</i>	XX-0-BRNU-2017-06025
978.	<i>Geum bulgaricum</i>	XX-0-BRNU-2017-06032
979.	<i>Geum molle</i>	XX-0-BRNU-2017-06036
980.	<i>Geum rivale</i>	XX-0-BRNU-2017-06037
981.	<i>Geum urbanum</i>	XX-0-BRNU-2017-06039
982.	<i>Gillenia trifoliata</i>	XX-0-BRNU-2017-06041
983.	<i>Malus baccata</i> 'Winter Gold'	XX-0-BRNU-2017-06051
984.	<i>Potentilla argentea</i>	XX-0-BRNU-2017-06067
985.	<i>Potentilla gracilis</i> var. <i>pulcherrima</i>	XX-0-BRNU-2017-06091
986.	<i>Potentilla grandiflora</i>	XX-0-BRNU-2017-06083
987.	<i>Potentilla hirta</i>	XX-0-BRNU-2017-06080
988.	<i>Potentilla inclinata</i>	XX-0-BRNU-2017-06081
989.	<i>Potentilla nepalensis</i>	XX-0-BRNU-2017-06086
990.	<i>Potentilla norvegica</i>	XX-0-BRNU-2017-06063
991.	<i>Potentilla recta</i>	XX-0-BRNU-2017-06090
992.	<i>Prunus laurocerasus</i>	XX-0-BRNU-2017-06114
993.	<i>Prunus mahaleb</i>	XX-0-BRNU-2017-06118
994.	<i>Pyracantha coccinea</i>	XX-0-BRNU-2017-06132
995.	<i>Rhodotypos scandens</i>	XX-0-BRNU-2017-06139
996.	<i>Rosa elliptica</i>	XX-0-BRNU-2017-06149
997.	<i>Rosa gallica</i>	XX-0-BRNU-2017-06143
998.	<i>Rosa hugonis</i>	XX-0-BRNU-2017-06145
999.	<i>Rosa majalis</i>	XX-0-BRNU-2017-06150
1000.	<i>Rosa maximowicziana</i>	XX-0-BRNU-2017-06151
1001.	<i>Rosa pendulina</i>	XX-0-BRNU-2017-06154

1002. Rosa spinosissima	XX-0-BRNU-2017-06168
1003. Sanguisorba canadensis	XX-0-BRNU-2017-06177
1004. Sanguisorba menziesii	XX-0-BRNU-2017-06179
1005. Sanguisorba minor	XX-0-BRNU-2017-06178
1006. Sanguisorba officinalis	XX-0-BRNU-2017-06176
1007. Sorbus caloneura	XX-0-BRNU-2017-06188

RUBIACEAE

1008. Asperula cynanchica	XX-0-BRNU-2017-06210
1009. Asperula tinctoria	XX-0-BRNU-2017-06212
1010. Galium album	XX-0-BRNU-2017-06218
1011. Galium glaucum	XX-0-BRNU-2017-06225
1012. Galium intermedium	XX-0-BRNU-2017-06229
1013. Galium mollugo	XX-0-BRNU-2017-06230
1014. Galium sylvaticum	XX-0-BRNU-2017-07152
1015. Galium verum	XX-0-BRNU-2017-06237
1016. Rubia tinctorum	XX-0-BRNU-2017-06250

RUTACEAE

1017. Citrus trifoliata	XX-0-BRNU-2017-06264
1018. Dictamnus albus	XX-0-BRNU-2017-06268
1019. Ptelea trifoliata	XX-0-BRNU-2017-06278
1020. Ruta graveolens	XX-0-BRNU-2017-06279
1021. Skimmia japonica	XX-0-BRNU-2017-06282
1022. Zanthoxylum americanum	XX-0-BRNU-2017-06287

SAMBUCACEAE

1023. Sambucus ebulus	XX-0-BRNU-2017-00095
1024. Sambucus nigra	XX-0-BRNU-2017-00096

SAPINDACEAE

1025. <i>Cardiospermum halicacabum</i>	XX-0-BRNU-2017-06327
1026. <i>Koelreuteria paniculata</i>	XX-0-BRNU-2017-06328
1027. <i>Xanthoceras sorbifolium</i>	XX-0-BRNU-2017-06331

SAXIFRAGACEAE

1028. <i>Heuchera xbrizoides</i>	XX-0-BRNU-2017-06350
1029. <i>Heuchera americana</i>	XX-0-BRNU-2017-06352
1030. <i>Heuchera himalayensis</i>	XX-0-BRNU-2017-06351
1031. <i>Heuchera micrantha</i> 'Palace Purple'	XX-0-BRNU-2017-06353
1032. <i>Heuchera sanguinea</i>	XX-0-BRNU-2017-06349
1033. <i>Tellima grandiflora</i>	XX-0-BRNU-2017-06394

SCHISANDRACEAE

1034. <i>Schisandra chinensis</i>	XX-0-BRNU-2017-06434
-----------------------------------	----------------------

SCHIZAEACEAE

1035. <i>Anemia phyllitidis</i> G	XX-0-BRNU-2017-06436
1036. <i>Anemia rotundifolia</i> G	XX-0-BRNU-2017-06437

SCROPHULARIACEAE

1037. <i>Buddleja davidii</i>	XX-0-BRNU-2017-06401
1038. <i>Scrophularia nodosa</i>	XX-0-BRNU-2017-06406
1039. <i>Verbascum blattaria</i>	XX-0-BRNU-2017-06423
1040. <i>Verbascum chaixii</i> subsp. <i>austriacum</i>	XX-0-BRNU-2017-06412
1041. <i>Verbascum nigrum</i>	XX-0-BRNU-2017-06418
1042. <i>Verbascum phlomoides</i>	XX-0-BRNU-2020-08039
1043. <i>Verbascum phoeniceum</i>	XX-0-BRNU-2017-06421
1044. <i>Verbascum speciosum</i>	XX-0-BRNU-2017-06424

SOLANACEAE

1045. <i>Datura stramonium</i>	CZ-0-BRNU-2016-07055
--------------------------------	----------------------

CZ; district Břeclav, village Sedlec u Mikulova, football field; 48°46.77090' N, 16°41.56890' E

1046. <i>Hyoscyamus albus</i>	XX-0-BRNU-2020-07907
1047. <i>Nicotiana ×sanderi</i>	XX-0-BRNU-2017-06474
1048. <i>Nicotiana alata</i>	XX-0-BRNU-2017-06466
1049. <i>Nicotiana glauca</i>	XX-0-BRNU-2017-06468
1050. <i>Nicotiana langsdorffii</i>	XX-0-BRNU-2017-06471
1051. <i>Nicotiana rustica</i>	XX-0-BRNU-2017-06475
1052. <i>Nicotiana sylvestris</i>	XX-0-BRNU-2017-06477
1053. <i>Nicotiana tabacum</i>	XX-0-BRNU-2017-06478
1054. <i>Petunia ×atkinsiana</i>	XX-0-BRNU-2017-06484
1055. <i>Physalis alkekengi</i>	XX-0-BRNU-2019-06493
1056. <i>Physalis philadelphica</i>	XX-0-BRNU-2017-06492
1057. <i>Salpiglossis sinuata</i>	XX-0-BRNU-2017-06498
1058. <i>Solanum aethiopicum</i>	XX-0-BRNU-2017-06504
1059. <i>Solanum citrullifolium</i>	XX-0-BRNU-2017-06505
1060. <i>Solanum dulcamara</i>	XX-0-BRNU-2017-06507
1061. <i>Solanum nigrum</i> CZ; Brno, Bílá hora hill; 49°11.6'N 16°39.6'E	CZ-0-BRNU-2017-06517
1062. <i>Solanum sisymbriifolium</i>	XX-0-BRNU-2017-06522
1063. <i>Solanum villosum</i>	XX-0-BRNU-2017-06512
STAPHYLEACEAE	
1064. <i>Staphylea pinnata</i>	XX-0-BRNU-2017-06530
STYRACACEAE	
1065. <i>Halesia tetraptera</i>	XX-0-BRNU-2017-06534
TAXACEAE	
1066. <i>Taxus baccata</i>	XX-0-BRNU-2017-06554
1067. <i>Torreya nucifera</i>	XX-0-BRNU-2017-06563

THELYPTERIDACEAE

1068. Thelypteris dentata **G** XX-0-BRNU-2019-07809
1069. Thelypteris patens **G** XX-0-BRNU-2018-07394

TOFIELDIACEAE

1070. Tofieldia calyculata XX-0-BRNU-2017-06582

TROPAEOLACEAE

1071. Tropaeolum majus XX-0-BRNU-2017-06584

TYPHACEAE

1072. Typha angustifolia XX-0-BRNU-2017-06589
1073. Typha laxmannii XX-0-BRNU-2017-06591

VALERIANACEAE

1074. Centranthus ruber XX-0-BRNU-2017-02643
1075. Patrinia gibbosa XX-0-BRNU-2017-02698
1076. Valeriana officinalis XX-0-BRNU-2017-07123

VERBENACEAE

1077. Lantana camara **G** XX-0-BRNU-2017-06622
1078. Verbena hastata XX-0-BRNU-2017-06630
1079. Verbena officinalis XX-0-BRNU-2017-06627
1080. Verbena urticifolia XX-0-BRNU-2017-06628

VIBURNACEAE

1081. Viburnum lantana XX-0-BRNU-2017-00104
1082. Viburnum rhytidophyllum XX-0-BRNU-2017-00119

VIOLACEAE

1083. Viola elatior XX-0-BRNU-2017-06641
1084. Viola jooi XX-0-BRNU-2017-06644
1085. Viola mirabilis XX-0-BRNU-2017-06646
1086. Viola odorata XX-0-BRNU-2017-06648

1087. <i>Viola prionantha</i>	XX-0-BRNU-2017-06654
1088. <i>Viola tricolor</i>	XX-0-BRNU-2017-06666
VITACEAE	
1089. <i>Ampelopsis aconitifolia</i>	XX-0-BRNU-2017-06670
1090. <i>Ampelopsis glandulosa</i>	XX-0-BRNU-2019-07692
1091. <i>Parthenocissus tricuspidata</i>	XX-0-BRNU-2017-06686

DESIDERATA 2020–2021

BOTANICAL GARDEN
FACULTY OF SCIENCE
MASARYK UNIVERSITY
Kotlářská 2
CZ – 611 37 Brno
Czech Republic

You can order the seeds also by e-mail: zahrada@sci.muni.cz.

**Your order should reach us on the prepared order form before May 1, 2021.
Please, limit your order to a maximum of 20 items.**

YOUR ADDRESS:

1.	11.
2.	12.
3.	13.
4.	14.
5.	15.
6.	16.
7.	17.
8.	18.
9.	19.
10.	20.