

Article

The Year of the Honey Bee (*Apis mellifera* L.) with Respect to Its Physiology and Immunity: A Search for Biochemical Markers of Longevity

Martin Kunc ¹, Pavel Dobeš ¹, Jana Hurychová ¹, Libor Vojtek ¹, Silvana Beani Poiani ^{1,2}, Jiří Danihlák ³, Jaroslav Havlík ⁴, Dalibor Titěra ⁵ and Pavel Hyršl ^{1,*}

¹ Institute of Experimental Biology, Faculty of Science, Masaryk University, Kotlarska 2, 611 37 Brno, Czech Republic

² Department of Biology, Institute of Biosciences, Center of Study of Social Insects (CEIS), Sao Paulo State University—UNESP, Avenida 24A, 1515 Bela Vista, Rio Claro 13506-900, Brazil

³ Department of Biochemistry, Faculty of Science, Palacky University Olomouc, Slechtitelu 27, 783 71 Olomouc, Czech Republic

⁴ Department of Food Quality and Safety, Faculty of Agrobiolgy, Food and Natural Resources, Czech University of Life Sciences, Kamycka 129, 252 63 Prague, Czech Republic

⁵ Bee Research Institute, Libcice nad Vltavou 252 66, Czech Republic

* Correspondence: hyrsl@sci.muni.cz; Tel.: +420-549-494-510

Received: 27 June 2019; Accepted: 2 August 2019; Published: 7 August 2019



Abstract: It has been known for many years that in temperate climates the European honey bee, *Apis mellifera*, exists in the form of two distinct populations within the year, short-living summer bees and long-living winter bees. However, there is only limited knowledge about the basic biochemical markers of winter and summer populations as yet. Nevertheless, the distinction between these two kinds of bees is becoming increasingly important as it can help beekeepers to estimate proportion of long-living bees in hives and therefore in part predict success of overwintering. To identify markers of winter generations, we employed the continuous long-term monitoring of a single honey bee colony for almost two years, which included measurements of physiological and immunological parameters. The results showed that the total concentration of proteins, the level of vitellogenin, and the antibacterial activity of haemolymph are the best three of all followed parameters that are related to honey bee longevity and can therefore be used as its markers.

Keywords: honey bee; immunity; physiology; seasonal changes; longevity

1. Introduction

Honey bees (*Apis mellifera* L.) are fundamental for agriculture, playing a crucial role in the plant life cycle as one of the most important pollinators. More than 75% of the 115 leading crop species worldwide are dependent on or at least benefit from animal pollination [1,2]. Bees (*Apoidea*) are responsible for the pollination of approximately 70% of all crop species worldwide [3]. Mainly for this reason, there are serious economic implications when honey bees struggle with pathogens (*Paenibacillus larvae*, *Ascosphaera apis*, viruses, etc.), parasites and pests (*Varroa destructor*, *Nosema* sp., *Aethina tumida*, etc.), and other factors affecting the survival of the colony [4].

There are also still unexplained cases of colony collapse disorder (CCD) [5,6]. Honey bee colony losses are considered to be a multifactorial problem, combining the influence of biotic and abiotic stressors, e.g., nutrition [7], pesticides [8], and climate change [9]. Therefore, knowledge of the physiological and immunological status of honey bee colonies is pivotal in helping beekeepers counteract potential problems and protect honey bees.

The majority of CCD occur during winter, which is the most risky period for honey bee colonies [10,11]. Therefore, it is of the utmost importance to study changes in the honey bee organism during the winter period. Two characteristic populations of honey bees emerge during the year in temperate climates. Whereas the so-called summer generation is short-living with a lifespan of between 15 and 48 days, the winter generation can survive up to 8 months [12]. Short-living honey bees must collect sufficient amounts of nectar, honeydew, and pollen during the summer to have enough supplies to survive unfavourable times when a crop is not available, i.e., winter. Long-living honey bees regulate colony temperature during the winter season and are predestined to initiate brood rearing at its end, when this generation is replaced by a new summer generation [13,14]. The winter population is also exposed to higher ecological pressure of pests and diseases [15–18].

There are not only behavioural [19] differences between these two honey bee populations but also physiological ones. For example, the titre of juvenile hormone (JH) is elevated [20,21], and the hypopharyngeal glands are hypertrophied in summer bees [22,23]. In contrast, the amount of storage and the antioxidant protein vitellogenin (Vg) is increased in the long-living generation [20,24,25]. Fat body, which is used as a store of nutrients and a source of energy, is also enlarged in winter bees [26]. Moreover, the immune response of honey bees varies over the year as it relies on different mechanisms. Short-living generations combine humoral and cellular immune reactions, whereas long-living populations depend mostly on humoral immunity because the functions of haemocytes during the winter season are limited [27–30]. Last but not least, honey bees are social insects; a social immunity [31–33] and social caste [34] play an important role in colony defence as well.

The successful over-wintering of honey bee colonies depends on the size and quality of the winter bee generation [23,35]. Good beekeeping practice, which is focused mainly on Integrated Pest Management with a special focus on mites [36], can help to protect long-living honey bees. However, the complete biochemical characterisation of winter and summer generations is so far missing. Here, we present the comprehensive results of basic biochemical analyses which could help beekeepers to evaluate the physiological status of their colonies within the whole year and thus help to evaluate the presence of long-living bees in colony. In this study, we followed the selected honey bee colony over a period of approximately two years and monitored changes in the physiology and immunity of honey bees in the hive. We have identified several physiological and immune parameters which significantly differ between summer and winter honey bee populations and we propose these parameters as markers of longevity.

2. Materials and Methods

2.1. Experimental Bees

Honey bees, *Apis mellifera* L., used in the experiment were obtained from a colony kept in Kývalka apiary near Brno, Czech Republic (GPS location: 49.1886747N, 16.4513211E). The hive chosen for experiments was selected by a professional apiarist with more than 30 years of experience in beekeeping. The experimental colony was selected based on its health and development conditions. The colony was nosema disease and varroasis negative without any clinical symptoms of other diseases. The queen was introduced to the colony in 2015 and remained the same during the whole experiment (March 2017–September 2018), until the queen's supersedure in October 2018. The colony performed stable brood rearing during years 2015 and 2016. The experimental colony received standard care during the whole experiment. It was treated against varroasis by flumethrin and fed by approximately 15 kg of sucrose solution (3:2 sucrose/water) every autumn; no other supplements were added to the hive. All samples for analysis were collected from the experimental colony to observe the long-term developmental characteristics of the hive and to minimize genetic variance. At the beginning of each month, approximately 150 bees were collected randomly from the colony. Specifically, the bees were shaken off the comb on plastic plate from which they were swept to plastic vials covered by perforated caps to enable ventilation. To avoid the sampling of newly hatched adults, honey bees were collected

from the comb which was not part of the brood chamber but was located right next to it. The data gathered from the experimental colony (colony 1) were one-time compared in June 2018 to other two selected colonies (colony 2 and 3) located in the same apiary. All colonies received the same treatment, developed independently, and were led by unrelated queens. Temperature and humidity at the apiary were recorded continuously during the experiment. The average values from 3 days prior collection are plotted in results.

2.2. Haemolymph Collection

Bees were quickly transported to the laboratory in plastic vials with perforated cap to enable air flow, and haemolymph samples were collected immediately after arrival by cutting off the abdomen and gently pressing the thorax. The haemolymph samples were always taken within two hours after collecting the bees to plastic vials. Two microliters of haemolymph were bled out from each individual honey bee, and if not stated otherwise, the haemolymph from ten bees was pooled to prepare a mixed sample. Fresh haemolymph samples were used to determinate the concentration of haemocytes, the total protein concentration, and phenoloxidase activity. Haemolymph samples used to determinate the other physiological and immunological parameters were diluted with phenylthiourea solution to prevent melanisation and coagulation. Specifically, 20 μL of collected haemolymph was mixed with 5 μL of phenylthiourea (PTU, 1 mg/mL) in phosphate buffer (PBS, pH 7.0) and stored at $-80\text{ }^{\circ}\text{C}$ for further use.

2.3. Physiological Parameters

The total protein concentration in haemolymph was measured. Five bees were bled out per sample without the use of PTU solution and five samples were prepared each month of the experiment. The samples were collected on ice to prevent melanisation. The total protein concentration was measured according to the Bradford method using a commercial kit (Bio-Rad, Hercules, CA, USA). The optical density was measured using a Multiscan GO spectrophotometer (ThermoFisher Scientific, Waltham, MA, USA) at 700 nm. The exact amount of total protein was calculated from a standard calibration curve prepared from bovine serum albumin (Sigma-Aldrich, St. Louis, MO, USA).

The total concentration of lipids was determined by the sulpho-phospho-vanillin method according to Zollner et al. [37] with modifications by Kodr k et al. [38]. One microliter of 1.25 \times diluted haemolymph sample was mixed with 200 μL of sulphuric acid (Penta, Prague, Czech Republic) and incubated at 100 $^{\circ}\text{C}$ for 10 min. After quick cooling in a water bath, 2 mL of 13 mM vanillin (Carl Roth GmbH & Co. KG, Karlsruhe, Germany) in 66.8% phosphoric acid (Penta, Prague, Czech Republic) was added and the resulting solution incubated for 30 min at room temperature. The optical density of samples was measured using a Sunrise spectrophotometer (Tecan, M nnedorf, Switzerland) at 546 nm. The concentration of total lipid was calculated from a standard calibration curve prepared from the serial dilution of oleic acid (Penta, Prague, Czech Republic).

The total concentration of carbohydrates was measured using the anthrone method [39]. 50 μL of diluted sample was mixed with 150 μL of 10.3 mM anthrone (Sigma-Aldrich, St. Louis, MO, USA) in 98% sulphuric acid (Penta, Prague, Czech Republic), after which the solution was gently mixed and incubated at 4 $^{\circ}\text{C}$ for 10 min. Then, the mixture was incubated at 100 $^{\circ}\text{C}$ for 20 min and then again at room temperature for 20 min. The optical density was measured using a Sense spectrophotometer (Hidex, Turku, Finland) at 620 nm with agitation prior to reading. The total concentration of carbohydrates was calculated according to a calibration curve prepared from differentially diluted glucose (Sigma-Aldrich, St. Louis, MO, USA).

Levels of vitellogenin (~180 kDa) were determined by sodium dodecyl sulphate (SDS) electrophoresis according to G tschenberger et al. [40] with modifications using a Miniprotein II apparatus (Bio-Rad, Hercules, CA, USA). Five microliters of frozen haemolymph samples were diluted 50 \times in 0.125 M Tris buffer pH 6.8, and 10 μL of diluted sample were mixed with 10 μL of sample buffer, 7 μL of mercaptoethanol (Sigma-Aldrich, St. Louis, MO, USA), and 73 μL of 0.125 M Tris

buffer pH 6.8, incubated for five minutes at 90 °C, and loaded onto 7.5% acrylamide separation gel. After separation by SDS electrophoresis, the gels were transferred to 1.2 mM Coomassie blue (R250, Bio-Rad, Hercules, CA, USA) staining solution; 4:5:1 water/methanol/acetic acid (Penta, Prague, Czech Republic). Subsequently, gels were destained in a solution of 2 mM acetic acid in 33.3% methanol until the protein bands were clearly visible. Gels were scanned, and the densities of vitellogenin bands were measured in ImageJ v.1.52a (National Institutes of Health, Bethesda, MD, USA). The total vitellogenin concentration was calculated according to a calibration curve prepared from the serial dilution of bovine serum albumin (66.5 kDa, Sigma-Aldrich, St. Louis, MO, USA) that was present on each acrylamide gel.

2.4. Cellular Immunity

To determine the concentration of circulating haemocytes, 10 µL of haemolymph from five bees were mixed with 2.5 µL of PTU in PBS (1 mg/mL). The haemocytes were counted using a haemocytometer under a CX 31 light microscope (Olympus, Tokyo, Japan) with phase contrast. Four samples were prepared each month of the experiment. The number of haemocytes was expressed as the count of haemocytes per microliter of haemolymph and evaluated within the experiment.

2.5. Humoral Immunity

The antibacterial activity of honey bee haemolymph was determined by radial diffusion assay on agar plates inoculated with *Micrococcus luteus* (CCM 169). Bacteria were cultured overnight in liquid LB medium (MOBIO, Carlsbad, CA, USA) on a rotary shaker (100 RPM, room temperature). After cultivation, the suspension was diluted to OD₆₀₀ 1.5, mixed with melted LB agar (4% agar in LB, MOBIO, Carlsbad, CA, USA) in the ratio 1:500 (v/v) at a temperature below 50 °C and then poured on Petri dishes. The agar plates supplemented with *M. luteus* were left to solidify before wells of diameter 2 mm were punctured. The honey bee haemolymph and a serial dilution of pure lysozyme (EC 3.2.1.17; Sigma-Aldrich, St. Louis, MO, USA) were loaded into the wells to a volume of 5 µL. After incubation at 30 °C for 24 h, the inhibition zones around wells were scored and the antibacterial activity of haemolymph was expressed as the equivalent of lysozyme standard.

The activity of phenoloxidase (PO) was measured in freshly collected haemolymph without phenylthiourea treatment, as published before [41,42]. Haemolymph from five honey bees per sample (total volume 10 µL) was collected in ice-cold PBS (190 µL; pH 7.0) and gently mixed by pipetting. Forty microliters of diluted haemolymph were transferred to a microplate well and incubated for 5 min at room temperature. After incubation, 160 µL of PO substrate 3,4-dihydroxy-DL-phenylalanine (3 mg/mL in PBS; Sigma-Aldrich, St. Louis, MO, USA) was added to start the reaction. The increase in absorbance at 492 nm was measured every two minutes for 30 min using a Sunrise plate reader (Tecan, Männedorf, Switzerland). PO activity was determined as the melanisation rate after 30 min of reaction and expressed as the integral of the reaction curve.

2.6. Data Presentation and Statistical Analysis

The results were plotted using Prism software (GraphPad Software, version 7.0, San Diego, CA, USA). Statistical differences were evaluated by one-way ANOVA with post hoc Dunn's test comparing two short-living populations, May 2017–August 2017, i.e., summer 2017, and May 2018–August 2018, i.e., summer 2018, and one long-living generation, October 2017–March 2018, i.e., winter 2017/2018. To compare differences only between summer and winter generations, transient months (March, April, September), when a mixture of honey bees were present in hives, were omitted from the analysis. Compilation of statistical data and p-values of Dunn's test calculated by GraphPad are provided in supplementary material (Tables S1 and S2). The multivariate Spearman correlations test was performed to test relationships between the measured variables (physiological and immunological parameters). The Spearman correlation coefficient r varies from -1 to $+1$. An r value close to -1 indicates a negative

correlation, while an r value close to +1 indicates a positive correlation. As the correlation coefficient value goes towards 0, the relationship between the two variables is considered weaker.

Principal component analysis (PCA) was performed to assess correlations between the physiological parameters (total protein, lipid, carbohydrate and vitellogenin concentrations, antibacterial activity, phenoloxidase activity, and haemocyte concentration) and the seasons when the workers were collected (summer 2017, winter 2017/2018, and summer 2018). A statistical test was performed on data using the free PAST 3.05 software (University of Oslo, Oslo, Norway). Since the variables are in different units of measurements, we used a correlation matrix to standardize each of the variables and to perform PCA. In the graph, summer 2017 is represented by full black dots, winter 2017/2018 by blue squares, and summer 2018 by red crosses.

3. Results

3.1. Physiological Parameters

The concentration of total proteins in haemolymph varied around 30 mg/mL during both tested summer periods, and we did not observe any differences between the two corresponding short-living honey bee populations investigated in the experiment (Figure 1a). However, the protein level increased significantly during the winter period and remained at over 50 mg/mL from October to March.

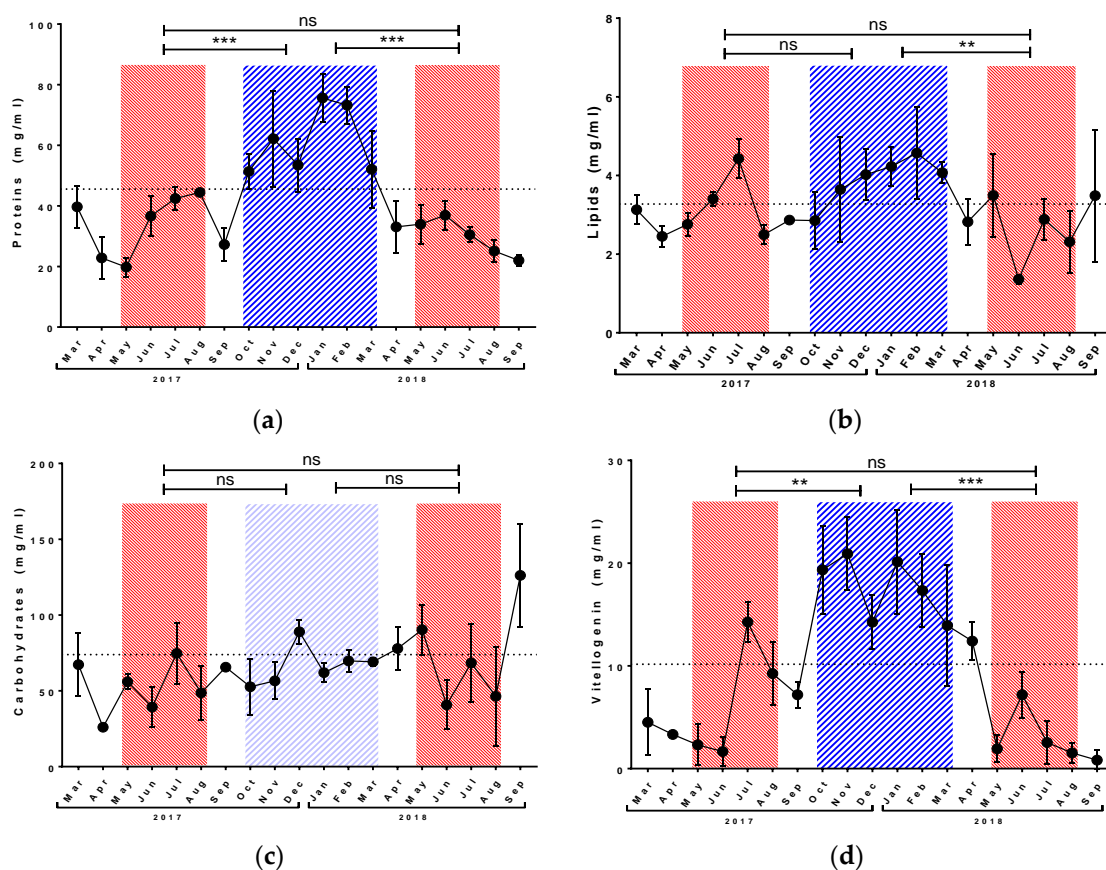


Figure 1. Seasonal development of total protein (a), lipid (b), and carbohydrate (c) concentration and level of vitellogenin (d) in honey bee haemolymph. Red striped areas indicate summer generations of honey bees (May–August), and blue area indicates winter generations (October–March). Dots represent mean \pm SD, $n = 3\text{--}5$. Dotted line represents annual average (October 2017–September 2018). Asterisk indicates significant difference ** $p < 0.01$, *** $p < 0.001$, ns = not significant.

During both tested summer periods, the concentration of total lipid oscillated around the annual average, with a peak of 4.4 ± 0.5 mg/mL in July 2017 (Figure 1b) and a minimum of 1.3 ± 0.1 mg/mL

in June 2018. The short-living honey bees did not differ from each other, but honey bees collected in summer 2018 differed significantly from individuals collected in winter 2017/2018. The level of lipids in winter was over 4 mg/mL.

The total carbohydrate concentration was very stable during all studied seasons (Figure 1c), and measured values oscillated around the annual average (73.8 mg/mL) with the exception of the value measured in September 2018. There were no significant differences among all tested seasons.

The concentration of vitellogenin was higher in winter 2017/2018 in comparison with both summer periods (Figure 1d). In the long-living population, the level of vitellogenin was around 20 mg/mL. In both summer seasons, values remained below the annual average of 10.2 mg/mL with the exception of the value 14.2 ± 1.9 mg/mL measured in July 2017. Short-living generations did not differ among themselves. The vitellogenin level in drones was below the limit of detection for particular method (Figure S1). The result was confirmed by western blot analysis (Figure S2).

3.2. Immunological Parameters

Antibacterial activity (Figure 2a) varied around 4 mg/mL in the winter season, with a peak of 4.7 ± 2.7 mg/mL in December 2017. In both tested short-living generations, the level of antibacterial activity was lower than the annual average. Values in summer 2018 reached around 2 mg/mL and were significantly higher than values in summer 2017, which reached 0.5 mg/mL. Both short-living generations showed significantly lower antibacterial activity than the winter population.

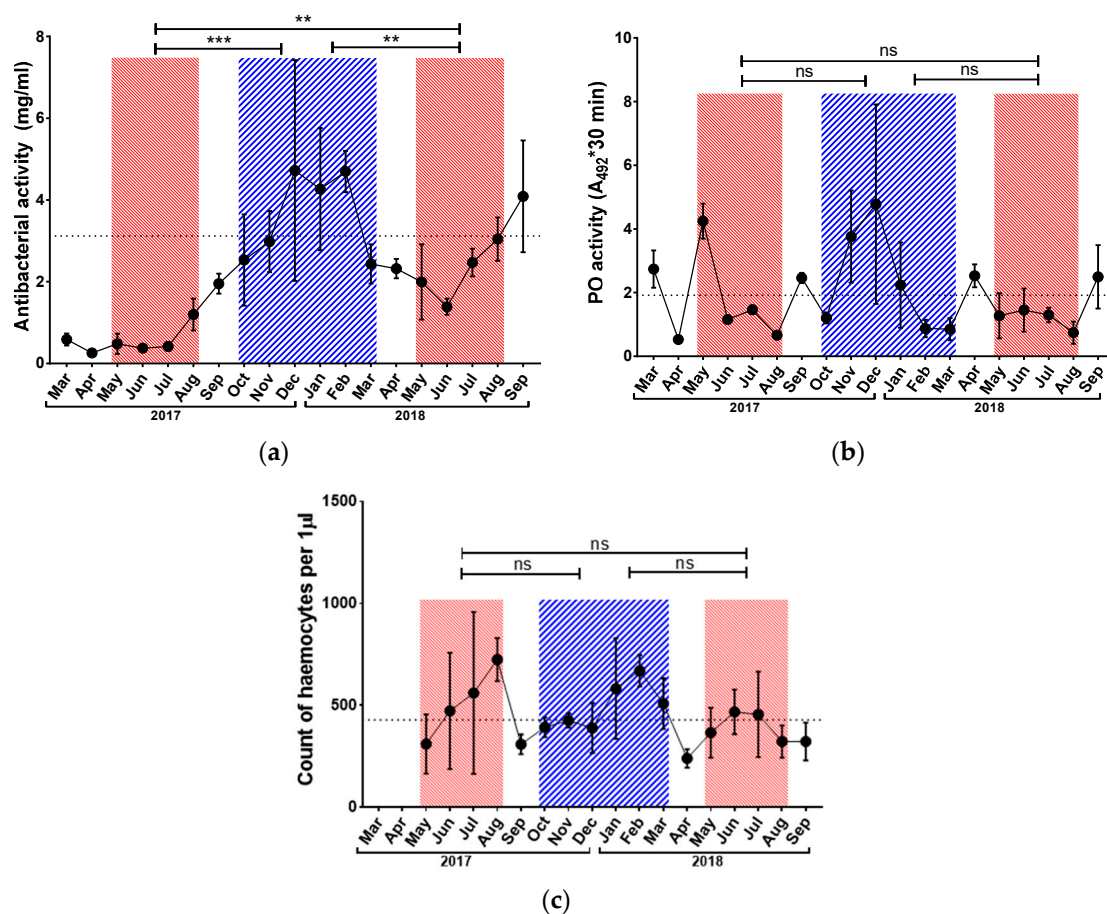


Figure 2. Seasonal development of antibacterial activity (a), the activity of phenoloxidase (b) and haemocytes counts (c) in honey bee haemolymph. Red striped areas indicate summer generations of honey bees (May–August), and blue area indicates winter generation (October–March). Dots represent mean \pm SD, n = 3–5. Dotted line represents annual average (October 2017–September 2018). Asterisk indicates significant difference ** $p < 0.01$, *** $p < 0.001$, ns = not significant.

Phenoloxidase activity increased slightly but not significantly in the winter period (Figure 2b). This measured parameter showed a high degree of variability and no statistically significant differences were detected among the monitored seasons.

In contrast with PO activity, the concentration of haemocytes was very stable during the monitored period (Figure 2c). Haemocyte counts oscillated around 500 cells/ μL , which was very close to the annual average (429 cells/ μL). There were noticeable increases in summer 2017 and winter 2017/2018, with values around 600 cells/ μL , while the summer 2018 value was around the annual average. Statistical analysis did not reveal any differences in haemocyte concentration dependent on the season.

The experimental colony (colony 1) was compared to other two colonies (colony 2 and 3) in June 2018 to address the variability of measured parameters (Figures S3 and S4). No significant differences were observed among tested colonies except of PO activity which was lower in colony 1 than in both other tested colonies (Figure S4b).

In parallel with physiological and immunological parameters of honey bees, we followed changes in temperature and humidity at the site of the apiary where honey bees were collected (Figure 3). The highest recorded temperatures were 26.7 °C and 26.4 °C in August 2017 and August 2018, respectively. The lowest temperature was -3.4 °C measured in March 2018. Relative humidity oscillated between 50% and 90%, with the highest values in January and February 2018.

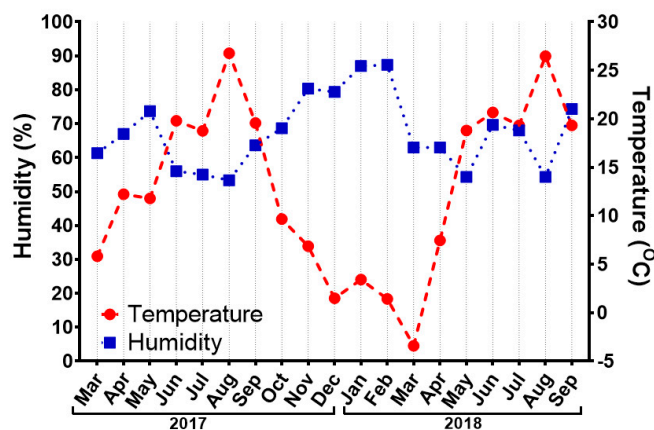


Figure 3. Changes in humidity (blue squares, left y -axis) and temperature (red dots, right y -axis) at the location of the apiary where honey bees were collected. Each point represents the mean value of measurements three days before the collection and on the day of collection.

Correlations among all measured physiological and immunological parameters were identified using the Spearman correlation test; significant results from all three seasons are summarised in Table 1. Total protein concentration correlated positively with antibacterial activity both in summer 2017 and winter 2017/2018, with r_s values of 0.648 and 0.542, respectively. During summer 2017, protein concentration correlated positively with vitellogenin concentration ($r_s = 0.608$) but negatively with phenoloxidase activity ($r_s = -0.81$). Moreover, total lipid concentration correlated positively with carbohydrates ($r_s = 0.771$) in summer 2018 and with haemocyte count in winter 2017/2018 ($r_s = 0.471$).

Table 1. Spearman rank correlations for the different variables which showed significant *p*-values for the three seasons, summer 2017, winter 2017/2018, and summer 2018.

Summer 2017			
Variable	by Variable	Spearman r	<i>p</i> Value
Antibacterial activity	Proteins	0.648	0.026
Proteins	Phenoloxidase	−0.81	0.022
Proteins	Vitellogenin	0.608	0.04
Winter 2017/2018			
Variable	by Variable	Spearman r	<i>p</i> Value
Lipids	Haemocytes	0.471	0.042
Antibacterial activity	Proteins	0.542	0.017
Summer 2018			
Variable	by Variable	Spearman r	<i>p</i> Value
Lipids	Carbohydrates	0.771	0.001

In the present study, the three principal components generated by PCA (PC1, PC2, and PC3) explained 71.67% of the variability among the groups (summer 2017, winter 2017/2018, and summer 2018). PCA separated the workers from summer 2017, summer 2018, and winter 2017/2018 into two major groups and correlated them with the physiological parameters (Figure 4). Summer 2017 and summer 2018 are clearly grouped together mainly on the left side of the graph, while winter 2017/2018 is on the right side. All variables are on the right side of the graph, which means that they act together to separate summer from winter bees. However, each variable has its own significant value. The separation of summer and winter groups is due to the most significant variables in the data, their significance given by their factor loading, which ranges from +1 to −1. There were two major significant variables, proteins and vitellogenin, with factor loadings of 0.811 and 0.775, respectively. Lipids (factor loading 0.672) and antibacterial activity (factor loading 0.661) were also significant variables, though weaker than proteins and vitellogenin. Haemocytes, phenoloxidase, and carbohydrates exerted less influence on summer and winter groups in comparison with the other parameters.

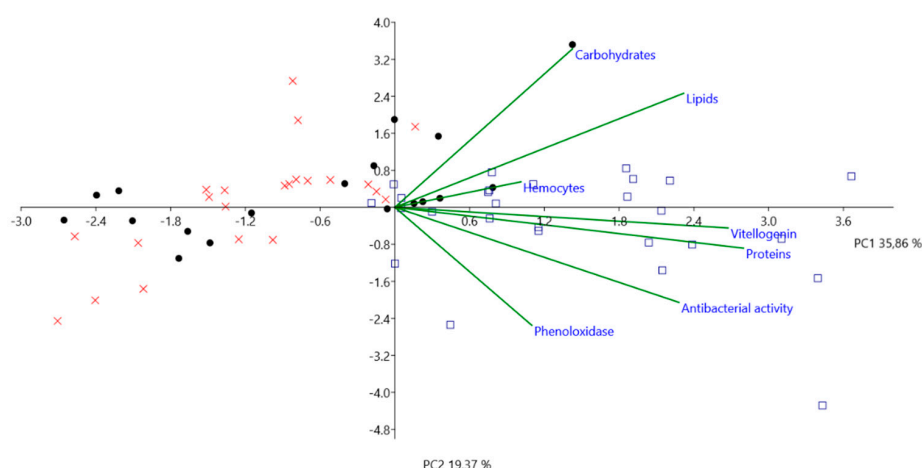


Figure 4. Principal component analysis of variances (proteins, lipids, carbohydrates, vitellogenin, antibacterial activity, phenoloxidase, and haemocytes). Component 1 (PC1) depicted as the *x*-axis explains 35.86% of sample variability. Component 2 (PC2) depicted as the *y*-axis explains 19.37% of sample variability. Black dots, red crosses, and blue squares represent values for summer 2017, summer 2018, and winter 2017/2018, respectively. Green lines express the extent to which each variable contributes to the explanation of the differences.

Range of the values per each population for the three selected markers of longevity based on PCA analysis were depicted as 75% percentile of the values (Figure 5). All of the values were divided into quartiles; upper and lower quartiles in summer and winter populations were cut off, respectively. These values were considered as the mixture of both populations or might be negatively affected by unspecified environmental factors, i.e., pathologies, and therefore were excluded from the range. Total concentration of proteins in short-living population ranged between 17 and 42 mg/mL, and its level was elevated in long-living populations to 49–87 mg/mL. Similarly, level of vitellogenin was lower in summer generation (0–10 mg/mL) in comparison to winter generation (14–26 mg/mL). The antibacterial activity, measured as equivalent of lysozyme concentration, decreased in short-living honey bees 0–2 mg/mL and increased in long-living bees. The physiological ranges of tested parameters for each population are summarized in Table 2.

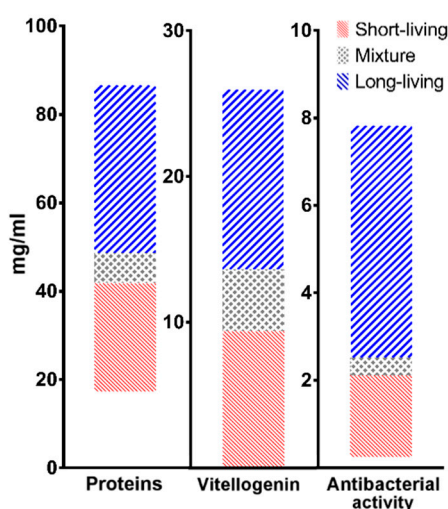


Figure 5. Graphical depiction of proposed physiological ranges in protein, vitellogenin, and antimicrobial level for each season. Red, blue, and grey areas represent short-living, long-living, and mixed populations, respectively.

Table 2. Summarization of proposed physiological range for each selected longevity markers based on PCA analysis.

	Short-Living	Long-Living
Proteins	17–42 mg/mL	49–87 mg/mL
Vitellogenin	0–10 mg/mL	14–26 mg/mL
Antibacterial activity	0–2 mg/mL	2.5–8 mg/mL

4. Discussion

Although it has been known for a long time that two distinct honey bee populations exist in the same colony, such knowledge based on observations of lifespan [12], knowledge concerning their biochemical parameters in general, is limited. Mostly, vitellogenin, as a storage and antioxidative protein, is associated with honey bee longevity [13,20,26,27,43,44]. However, other important parameters that may also characterise distinct populations of honey bees have received less attention. In an attempt to fill this gap and improve knowledge about longevity, the main purpose of the present study was to evaluate all fundamental physiological and immunological parameters of adult workers and correlate them with long-living and short-living generations of honey bees. In accord with published literature [13], we divided the populations of honey bees according to seasonal development. Bees from October to March were considered to belong to long-living population and bees from the rest of the year as belonging to short-living population. September and April were considered as transition

months between seasons and less attention was given to them, since there was a high probability of an even distribution of both honey bee populations in the hive.

According to previous observations, higher contents of proteins and lipids in the haemolymph of winter bees coincided with higher amounts of these compounds in their fat body [45]. This increase is expected because honey bees have to create storage nutrients for the winter season. All organisms including bees have to maintain stable concentrations of basic nutrients in their circulatory systems and, in case of need, these nutrients can be replenished from storage tissues. In accordance, we found levels of carbohydrates to be very stable during the year. Not surprisingly, we detected a rapid increase in carbohydrates in September 2018, when sampling was conducted the day after the administration of sucrose solution to the beehives as a replacement for honey. As this practice might interfere with evaluation of the seasonal development of carbohydrate level as well as the levels of other nutrients in haemolymph, it clearly shows that sampling for the evaluation of the suggested biochemical parameters of longevity must be planned precisely in regard to colony treatment. During the year, the only sources of proteins and carbohydrates for bees are pollen and nectar, respectively [46]. The differences between summer 2017 and summer 2018 could have resulted from the variance of food sources during the season [47].

Because the cellular part of the immune system in long-living generations was observed to be limited, impaired phagocytosis and nodule formation [27,28], honey bees have to rely on the humoral part of the immune system during the winter period. This corresponds with the higher antibacterial activity of haemolymph in the winter population, which can be caused by inducible antibacterial peptides such as apidaecin, hymenoptaecin, abaecin, or constitutive antibacterial compounds such as lysozyme present in haemolymph [10,48–50]. Moreover, this increase in antibacterial activity correlates with higher protein levels in the winter honey bee generation. On the other hand, some authors reported reduced expression of immune genes in long-living generation and therefore higher susceptibility to diseases [27,28,51]. Another important part of the humoral immune system—the activity of enzyme phenoloxidase [52]—did not show significantly higher activity during winter. However, we observed a small increasing trend in PO activity in the long-living generation consistent with Lourenço et al. [53], who also showed an increase in PO activity in longer living workers. The honey bee genome possesses only one gene coding the PO precursor prophenoloxidase, whereas three and nine are present in *Drosophila* and *Anopheles*, respectively [49]. Furthermore, PO enzymatic activity is difficult to determine because of the rapid activation and depletion of the PO system [52]. This dynamic process leads to highly variable results, and it is necessary to use freshly collected haemolymph samples. Due to these reasons, the parameter is unsuitable for the occasional testing of honey bee longevity in beekeeping praxis.

During the winter season, honey bees rely on honey storage as the main and only source of food. This diet, composed mainly of carbohydrates, can influence the composition and function of haemocytes in long-living honey bee populations [28,54] leading to the suppression of cellular immunity. During winter, haemocytes participate less in the fight against pathogens than during the summer season. As one of the main reasons, the high energetic costs of haemocytes maintenance was identified in various organisms [55–57], which requires many resources that are subdued in winter. Moreover, many authors described that the number of haemocytes in circulation depends on age of the honey bee, and the strong reduction in haemocyte numbers was observed in old bees [24,25,29,30]. Our results showed a slight increase in the number of haemocytes during summer 2017 and winter 2017/2018 in comparison with the annual average but without any statistical significance. Although, we were not able to confirm seasonal-dependent variability of haemocyte numbers, this might partially be caused by sampling the bees of unspecific age.

Vitellogenin is a known internal storage glycolipoprotein synthesized in fat body cells and released into haemolymph [58,59]. Previous studies, in addition to the present one, have considered a higher level of vitellogenin in haemolymph to be a marker of winter bees [43,60–63]. Because higher amounts of vitellogenin in haemolymph indicate the existence of long-living honey bees, it is considered to be a major component important for overwintering [64]. To confirm that the most abundant 180 kDa form of

vitellogenin is present in haemolymph [58,59], we used drone haemolymph sample as negative control. As it was previously described, the drones have the vitellogenin only in the early stages of their life, and it disappears as they are three or more weeks old [40,65–68]. Our results confirmed these findings; however, the use of only one parameter measurement as a marker of longevity may not be sufficient. According to principal component analysis, the total level of haemolymph proteins correlated highly with physiological changes in the honey bee body during the winter season as well as with antibacterial activity measured against the non-pathogenic model bacteria *M. luteus*. Our conclusions are supported by previous studies [12,63,69,70]. Dainat et al. (2012) reported upregulation of immune genes as predictive marker; concurrently, they mentioned *Varroa* infestation as predictive marker of colony collapse disorder [10].

Because some authors described physiological differences in between honey bees reared in distinct conditions [71] and even variations among colonies [72], we employed measurements of two more colonies in June 2018. All tested hives did not differ in any physiological parameters (Figure S3). Similarly, there is consistency among the colonies in measured immunological reactions (Figure S4), except for PO activity which was lower in colony 1 than in others. However, the PO activity is a highly variable parameter and was not found to be suitable for comparison of summer and winter honey bee populations.

It is known that the weather can have significant influence on honey bee overwintering [73], foraging activity [74] or viral loads [75] in hives. Instead of direct weather impact on honey bee individuals, reduced pollen flow and therefore impaired nutrition can cause problems connected with malnutrition [7,76,77]. Hence, we collected data about weather, specifically temperature and humidity at the apiary location. During the experiment, the changes of weather parameters were typical for temperate climate as characterised especially by low winter temperatures. Minor differences were observed between years 2017 and 2018. However, for instance, the shift of temperature in April 2017 compared to April 2018, where the average temperature was under 10 °C in the latter, is supposed to have an impact on colony development during the rest of the year. Similarly, almost twice as high temperature in May 2018 compared to May 2017 could impact onset of brood rearing [78–80] or phenology [81–83] of the bees in the colony.

The advantage of selected methods is relative simplicity; therefore, the beekeepers could cooperate with a broad spectrum of laboratories in which the analyses can be implemented. However, if the longer transport and storage time of bees or sampled haemolymph would be considered, the influence of these factors on analyses results should be considered. Regarding the results of our study, the total protein concentration and the levels of vitellogenin and antibacterial activity in haemolymph could be used as relatively simple markers to determine the presence of long-living honey bees in a colony. Based on the results of analyses and their comparison to physiological values provided in Figure 5, beekeepers could adjust the care of their colonies. They can take practical precautions to protect beehives. For example, uniting of two or more weak colonies to create strong one is a possible solution, or several layers of insulation added to a beehive could be used for better protection of underdeveloped colonies [23,35]. Moreover, treatment of short-living populations against pathogens could be reflected in damaged long-living population. Therefore, underdeveloped colonies could be eliminated to save money for feeding and other costs. These precautions based on analyses results might reduce winter losses of honey bees.

The potential of selected markers to distinguish between summer and winter honey bee populations in the temperate climate was demonstrated in current study. Since this study was performed on one hive, future experiments would involve efforts to measure all three suggested parameters on a large number of honey bee colonies to differentiate genotype and environmental variables and correlate the results of analyses to the success overwintering rate. Based on this study, we suggest two preventive samplings per year in June and October. When compared between each other and with data provided in our study, the results of preventive samplings might provide useful insight into the readiness of long-living bees which are indispensable for successful overwintering. The ability to

reliably distinguish the two honey bee populations can provide a strong and useful tool for beekeepers. They could estimate proportion of long-living bees in the hives and based on the results predict potential overwintering problems. Our work provides basic knowledge about changes in physiological and immunological parameters in established honey bee colonies over a long time period of almost two years. The data collected can be used as a cornerstone for further studies estimating the proportions of long-living honey bees in their colony.

5. Conclusions

This study compared differences between long-living and short-living populations of honey bees. In detail, we described differences in the physiological and immunological parameters of both populations. Winter honey bees had higher amounts of total proteins, lipids, and vitellogenin along with higher levels of antibacterial activity in their haemolymph compared to summer bees. On the basis of this knowledge and in accordance with the results of PCA, we propose levels of total proteins, antibacterial activity, and vitellogenin as markers of long-living honey bee populations. Our results can help beekeepers to confirm the presence of long-living bees in colonies.

Supplementary Materials: The following are available online at <http://www.mdpi.com/2075-4450/10/8/244/s1>, Figure S1: Gel electrophoretic analysis of vitellogenin concentration; Figure S2: Western blot analysis of vitellogenin; Figure S3: Comparison of physiological parameters; Figure S4: Comparison of immunological parameters; Table S1: Compilation of statistical data; Table S2: *p*-Values of Dunn's test.

Author Contributions: P.H., P.D., and M.K. conceived the research and designed the experiments; L.V., D.T., J.D., and J.H. (Jaroslav Havlík) participated in the design and interpretation of the data; M.K., P.D., P.H., and J.H. (Jana Hurychová) performed experiments and analysis; S.B.P. performed multivariate statistics and interpretation of data; M.K., P.D., S.B.P., and P.H. wrote the paper and participated in the revisions. All authors read and approved the final manuscript.

Funding: This research was funded by NAZV grant number QJ1610248 and the Sao Paulo Research Foundation (FAPESP) grant 2017/19718-0.

Acknowledgments: The authors thank Ing. Oldřich Veverka for his highly professional help with the handling of honey bees and Matthew Nicholls for English corrections in the manuscript. We also thank the Czech Hydrometeorological Institute for providing the meteorological data; data were measured by the automatic meteorological station placed in VÚP areal Troubsko. At last but not least we thank for the help with western blot analysis to Lucie Woloszczuková.

Conflicts of Interest: The authors declare no conflicts of interest. The funders had no role in the design of the study; in the collection, analyses, or interpretation of data; in the writing of the manuscript, or in the decision to publish the results.

References

1. Klatt, B.K.; Holzschuh, A.; Westphal, C.; Clough, Y.; Smit, I.; Pawelzik, E.; Tschardtke, T. Bee pollination improves crop quality, shelf life and commercial value. *Proc. R. Soc. B Biol. Sci.* **2013**, *281*, 20132440. [[CrossRef](#)] [[PubMed](#)]
2. Klein, A.M.; Vaissière, B.E.; Cane, J.H.; Steffan-Dewenter, I.; Cunningham, S.A.; Kremen, C.; Tschardtke, T. Importance of pollinators in changing landscapes for world crops. *Proc. R. Soc. B Biol. Sci.* **2007**, *274*, 303–313. [[CrossRef](#)] [[PubMed](#)]
3. Potts, S.G.; Biesmeijer, J.C.; Kremen, C.; Neumann, P.; Schweiger, O.; Kunin, W.E. Global pollinator declines: Trends, impacts and drivers. *Trends Ecol. Evol.* **2010**, *25*, 345–353. [[CrossRef](#)] [[PubMed](#)]
4. Steinhauer, N.; Kulhanek, K.; Antúnez, K.; Human, H.; Chantawannakul, P.; Chauzat, M.P.; vanEngelsdorp, D. Drivers of colony losses. *Curr. Opin. Insect Sci.* **2018**, *26*, 142–148. [[CrossRef](#)] [[PubMed](#)]
5. Williams, G.R.; Tarpy, D.R.; VanEngelsdorp, D.; Chauzat, M.P.; Cox-Foster, D.L.; Delaplane, K.S.; Neumann, P.; Pettis, J.S.; Rogers, R.E.L.; Shutler, D. Colony collapse disorder in context. *BioEssays* **2010**, *32*, 845–846. [[CrossRef](#)]
6. vanEngelsdorp, D.; Evans, J.D.; Saegerman, C.; Mullin, C.; Haubruge, E.; Nguyen, B.K.; Frazier, M.; Frazier, J.; Cox-Foster, D.; Chen, Y.; et al. Colony collapse disorder: A descriptive study. *PLoS ONE* **2009**, *4*, e6481. [[CrossRef](#)] [[PubMed](#)]

7. Danihlík, J.; Škrabišová, M.; Lenobel, R.; Šebela, M.; Omar, E.; Petřivalský, M.; Crailsheim, K.; Brodschneider, R. Does the pollen diet influence the production and expression of antimicrobial peptides in individual honey bees? *Insects* **2018**, *9*, 79. [[CrossRef](#)]
8. Chauzat, M.-P.; Carpentier, P.; Martel, A.-C.; Bougeard, S.; Cougoule, N.; Porta, P.; Lachaize, J.; Madec, F.; Aubert, M.; Faucon, J.-P. Influence of Pesticide Residues on Honey Bee (Hymenoptera: Apidae) Colony Health in France. *Environ. Entomol.* **2009**, *38*, 514–523. [[CrossRef](#)]
9. Settele, J.; Bishop, J.; Potts, S.G. Climate Change Impacts on Cold Climates. *Treatise Geomorphol.* **2016**, *2*, 430–459.
10. Dainat, B.; Evans, J.D.; Chen, Y.P.; Gauthier, L.; Neumann, P. Predictive markers of honey bee colony collapse. *PLoS ONE* **2012**, *7*, e32151. [[CrossRef](#)]
11. van Dooremalen, C.; Gerritsen, L.; Cornelissen, B.; van der Steen, J.J.M.; van Langevelde, F.; Blacquiére, T. Winter survival of individual honey bees and honey bee colonies depends on level of varroa destructor infestation. *PLoS ONE* **2012**, *7*, e36285. [[CrossRef](#)] [[PubMed](#)]
12. Fluri, P. Wie alt werden die Arbeitsbienen? *Schweiz. Bienen Ztg.* **1990**, *113*, 620–625.
13. Mattila, H.R.; Harris, J.L.; Otis, G.W. Timing of production of winter bees in honey bee (*Apis mellifera*) colonies. *Insectes Soc.* **2001**, *48*, 88–93. [[CrossRef](#)]
14. Seeley, T.D.; Visscher, P.K. Survival of honeybees in cold climates: The critical timing of colony growth and reproduction. *Ecol. Entomol.* **1985**, *10*, 81–88. [[CrossRef](#)]
15. Eischen, F.A. Overwintering performance of honey bee colonies heavily infested with *Acarapis woodi*. *Apidologie* **1987**, *18*, 293–304. [[CrossRef](#)]
16. Bowen-Walker, P.L.; Martin, S.J.; Gunn, A. Preferential distribution of the parasitic mite, *Varroa jacobsoni* Oud. on overwintering honeybee (*Apis mellifera* L.) workers and changes in the level of parasitism. *Parasitology* **1997**, *114*, 151–157. [[CrossRef](#)]
17. Guzmán-Novoa, E.; Eccles, L.; Calvete, Y.; Mcgowan, J.; Kelly, P.G.; Correa-Benítez, A. Varroa destructor is the main culprit for the death and reduced populations of overwintered honey bee (*Apis mellifera*) colonies in Ontario, Canada. *Apidologie* **2010**, *41*, 443–450. [[CrossRef](#)]
18. Highfield, A.C.; El Nagar, A.; Mackinder, L.C.M.; Noël, L.M.L.J.; Hall, M.J.; Martin, S.J.; Schroeder, D.C. Deformed wing virus implicated in overwintering honeybee colony losses. *Appl. Environ. Microbiol.* **2009**, *75*, 7212–7220. [[CrossRef](#)]
19. Robinson, G.E. Regulation of division of labor in insect societies. *Annu. Rev. Entomol.* **1992**, *37*, 637–665. [[CrossRef](#)]
20. Huang, Z.Y.; Robinson, G.E. Seasonal changes in juvenile hormone titers and rates of biosynthesis in honey bees. *J. Comp. Physiol. B* **1995**, *165*, 18–28. [[CrossRef](#)]
21. Amdam, G.V.; Aase, A.L.T.; Seehuus, S.C.; Fondrk, M.K.; Norberg, K.; Hartfelder, K. Social reversal of immunosenescence in honey bee workers. *Exp. Gerontol.* **2005**, *40*, 939–947. [[CrossRef](#)] [[PubMed](#)]
22. Fluri, P.; Lüscher, M.; Wille, H.; Gerig, L. Changes in weight of the pharyngeal gland and haemolymph titres of juvenile hormone, protein and vitellogenin in worker honey bees. *J. Insect Physiol.* **1982**, *28*, 61–68. [[CrossRef](#)]
23. Döke, M.A.; Frazier, M.; Grozinger, C.M. Overwintering honey bees: Biology and management. *Curr. Opin. Insect Sci.* **2015**, *10*, 185–193. [[CrossRef](#)] [[PubMed](#)]
24. Fluri, P.; Wille, H.; Gerig, L.; Lüscher, M. Juvenile hormone, vitellogenin and haemocyte composition in winter worker honeybees (*Apis mellifera*). *Experientia* **1977**, *33*, 1240–1241. [[CrossRef](#)]
25. Amdam, G.V.; Simões, Z.L.P.; Hagen, A.; Norberg, K.; Schröder, K.; Mikkelsen, Ø.; Kirkwood, T.B.L.; Omholt, S.W. Hormonal control of the yolk precursor vitellogenin regulates immune function and longevity in honeybees. *Exp. Gerontol.* **2004**, *39*, 767–773. [[CrossRef](#)] [[PubMed](#)]
26. Fluri, P.; Bogdanov, S. Effects of artificial shortening of the photoperiod on honeybee (*Apis mellifera*) polyethism. *J. Apic. Res.* **1987**, *26*, 83–89. [[CrossRef](#)]
27. Steinmann, N.; Corona, M.; Neumann, P.; Dainat, B. Overwintering is associated with reduced expression of immune genes and higher susceptibility to virus infection in honey bees. *PLoS ONE* **2015**, *10*, e0129956. [[CrossRef](#)]
28. Gätschenberger, H.; Azzami, K.; Tautz, J.; Beier, H. Antibacterial Immune Competence of Honey Bees (*Apis mellifera*) Is Adapted to Different Life Stages and Environmental Risks. *PLoS ONE* **2013**, *8*, e66415. [[CrossRef](#)]

29. Schmid, M.R.; Brockmann, A.; Pirk, C.W.W.; Stanley, D.W.; Tautz, J. Adult honeybees (*Apis mellifera* L.) abandon hemocytic, but not phenoloxidase-based immunity. *J. Insect Physiol.* **2008**, *54*, 439–444. [[CrossRef](#)]
30. Wilson-Rich, N.; Dres, S.T.; Starks, P.T. The ontogeny of immunity: Development of innate immune strength in the honey bee (*Apis mellifera*). *J. Insect Physiol.* **2008**, *54*, 1392–1399. [[CrossRef](#)]
31. Le Conte, Y.; Alaux, C.; Martin, J.F.; Harbo, J.R.; Harris, J.W.; Dantec, C.; Séverac, D.; Cros-Arteil, S.; Navajas, M. Social immunity in honeybees (*Apis mellifera*): Transcriptome analysis of varroa-hygienic behaviour. *Insect Mol. Biol.* **2011**, *20*, 399–408. [[CrossRef](#)] [[PubMed](#)]
32. Simone-Finstrom, M.; Spivak, M. Propolis and bee health: The natural history and significance of resin use by honey bees. *Apidologie* **2010**, *41*, 295–311. [[CrossRef](#)]
33. Cremer, S.; Armitage, S.A.O.; Schmid-Hempel, P. Social Immunity. *Curr. Biol.* **2007**, *17*, 693–702. [[CrossRef](#)] [[PubMed](#)]
34. Munch, D.; Kreibich, C.D.; Amdam, G.V. Aging and its modulation in a long-lived worker caste of the honey bee. *J. Exp. Biol.* **2013**, *216*, 1638–1649. [[CrossRef](#)]
35. Free, J.B.; Racey, P.A. The effect of the size of honeybee colonies on food consumption, brood rearing and the longevity of the bees during winter. *Entomol. Exp. Appl.* **1968**, *11*, 241–249. [[CrossRef](#)]
36. Rosenkranz, P.; Aumeier, P.; Ziegelmann, B. Biology and control of Varroa destructor. *J. Invertebr. Pathol.* **2010**, *103*, S96–S119. [[CrossRef](#)] [[PubMed](#)]
37. Zollner, E.; Kirs, I.K. Über die quantitative Bestimmung von Lipoiden (Mikromethode) mittels der vielen natürlichen Lipoiden (allen bekannten Plasmalipoiden) gemeinsamen Sulfophosphovanillin-Reaktion. *Z. Gesamte Exp. Med.* **1962**, *135*, 545–561. [[CrossRef](#)]
38. Kodrik, D.; Socha, R.; Šimek, P.; Zemek, R.; Goldsworthy, G.J. A new member of the AKH/RPCH family that stimulates locomotory activity in the firebug, *Pyrrhocoris apterus* (Heteroptera). *Insect Biochem. Mol. Biol.* **2000**, *30*, 489–498. [[CrossRef](#)]
39. Carroll, N.; Longley, R.; Roe, J. The Determination of Glycogen in Liver and Muscle by Use of Anthrone Reagent. *J. Biol. Chem.* **1956**, *220*, 583–593. [[PubMed](#)]
40. Gatschenberger, H.; Gimple, O.; Tautz, J.; Beier, H. Honey bee drones maintain humoral immune competence throughout all life stages in the absence of vitellogenin production. *J. Exp. Biol.* **2012**, *215*, 1313–1322. [[CrossRef](#)] [[PubMed](#)]
41. Panzarino, O.; Hyršl, P.; Dobeš, P.; Vojtek, L.; Vernile, P.; Bari, G.; Terzano, R.; Spagnuolo, M.; de Lillo, E. Rank-based biomarker index to assess cadmium ecotoxicity on the earthworm *Eisenia andrei*. *Chemosphere* **2016**, *145*, 480–486. [[CrossRef](#)] [[PubMed](#)]
42. Jančaříková, G.; Houser, J.; Pavel, D.; Demo, G.; Hyršl, P.; Wimmerová, M. Characterization of novel bangle lectin from *Photorhabdus asymbiotica* with dual sugar-binding specificity and its effect on host immunity. *PLoS Pathog.* **2017**, *13*, e1006564. [[CrossRef](#)] [[PubMed](#)]
43. Yang, W.; Tian, Y.; Han, M.; Miao, X. Longevity extension of worker honey bees (*Apis mellifera*) by royal jelly: Optimal dose and active ingredient. *PeerJ* **2017**, *5*, e3118. [[CrossRef](#)] [[PubMed](#)]
44. Medina, R.G.; Paxton, R.J.; De Luna, E.; Fleites-Ayil, F.A.; Medina Medina, L.A.; Quezada-Euán, J.J.G. Developmental stability, age at onset of foraging and longevity of Africanized honey bees (*Apis mellifera* L.) under heat stress (Hymenoptera: Apidae). *J. Therm. Biol.* **2018**, *74*, 214–225. [[CrossRef](#)] [[PubMed](#)]
45. Shehata, S.M.; Townsend, G.F.; Shuel, R.W. Seasonal Physiological Changes in Queen and Worker Honeybees. *J. Apic. Res.* **1981**, *20*, 69–78. [[CrossRef](#)]
46. Erler, S.; Moritz, R.F.A. Pharmacophagy and pharmacophory: Mechanisms of self-medication and disease prevention in the honeybee colony (*Apis mellifera*). *Apidologie* **2016**, *47*, 389–411. [[CrossRef](#)]
47. Frias, B.E.D.; Barbosa, C.D.; Lourenço, A.P. Pollen nutrition in honey bees (*Apis mellifera*): Impact on adult health. *Apidologie* **2016**, *47*, 15–25. [[CrossRef](#)]
48. Casteels, P.; Ampe, C.; Riviere, L.; van Damme, J.; Elicon, C.; Fleming, M.; Jacobs, F.; Tempst, P. Isolation and characterization of abaecin, a major antibacterial response peptide in the honeybee (*Apis mellifera*). *Eur. J. Biochem.* **1990**, *187*, 381–386. [[CrossRef](#)]
49. Evans, J.D.; Aronstein, K.; Chen, Y.P.; Hetru, C.; Imler, J.L.; Jiang, H.; Kanosi, M.; Thompson, G.J.; Zou, Z.; Hultmark, D. Immune pathways and defence mechanisms in honey bees *Apis mellifera*. *Insect Mol. Biol.* **2017**, *15*, 645–656. [[CrossRef](#)]
50. Danihlík, J.; Aronstein, K.; Petřivalský, M. Antimicrobial peptides: A key component of honey bee innate immunity. *J. Apic. Res.* **2015**, *54*, 123–136. [[CrossRef](#)]

51. Azzami, K.; Ritter, W.; Tautz, J.; Beier, H. Infection of honey bees with acute bee paralysis virus does not trigger humoral or cellular immune responses. *Arch. Virol.* **2012**, *157*, 689–702. [[CrossRef](#)]
52. González-Santoyo, I.; Córdoba-Aguilar, A. Phenoloxidase: A key component of the insect immune system. *Entomol. Exp. Appl.* **2012**, *142*, 1–16. [[CrossRef](#)]
53. Lourenço, A.P.; Zufelato, M.S.; Gentile Bitondi, M.M.; Paulino Simões, Z.L. Molecular characterization of a cDNA encoding prophenoloxidase and its expression in *Apis mellifera*. *Insect Biochem. Mol. Biol.* **2005**, *35*, 541–552. [[CrossRef](#)] [[PubMed](#)]
54. Szymas, B.; Jedruszuk, A. The influence of different diets on haemocytes of adult worker honey bees, *Apis mellifera*. *Apidologie* **2003**, *34*, 97–102. [[CrossRef](#)]
55. Segerstrom, S.C. Stress, energy, and immunity: An ecological view. *Curr. Dir. Psychol. Sci.* **2007**, *16*, 326–330. [[CrossRef](#)]
56. Shattuck-Heidorn, H.; Reiches, M.W.; Prentice, A.M.; Moore, S.E.; Ellison, P.T. Energetics and the immune system: Trade-offs associated with non-acute levels of CRP in adolescent Gambian girls. *Evol. Med. Public Health* **2017**, *2017*, 27–38. [[CrossRef](#)]
57. Lochmiller, R.L.; Deerenberg, C. Trade-offs in evolutionary immunology: Just what is the cost of immunity? *Oikos* **2000**, *88*, 87–98. [[CrossRef](#)]
58. Wheeler, D.E.; Kawooya, J.K. Purification and characterization of honey bee vitellogenin. *Arch. Insect Biochem. Physiol.* **1990**, *14*, 253–267. [[CrossRef](#)]
59. Seehuus, S.-C.; Norberg, K.; Krekling, T.; Fondrk, K.; Amdam, G.V. Immunogold Localization of Vitellogenin in the Ovaries, Hypopharyngeal Glands and Head Fat Bodies of Honeybee Workers, *Apis mellifera*. *J. Insect Sci.* **2009**, *7*, 52. [[CrossRef](#)]
60. Amdam, G.V.; Norberg, K.; Omholt, S.W.; Kryger, P.; Lourenço, A.P.; Bitondi, M.M.G.; Simões, Z.L.P. Higher vitellogenin concentrations in honey bee workers may be an adaptation to life in temperate climates. *Insectes Soc.* **2005**, *52*, 316–319. [[CrossRef](#)]
61. Aurori, C.M.; Buttstedt, A.; Dezmirean, D.S.; Mărghițaș, L.A.; Moritz, R.F.A.; Erler, S. What is the main driver of ageing in long-lived winter honeybees: Antioxidant enzymes, innate immunity, or vitellogenin? *J. Gerontol. Ser. A Biol. Sci. Med. Sci.* **2014**, *69*, 633–639. [[CrossRef](#)]
62. Corona, M.; Velarde, R.A.; Remolina, S.; Moran-Lauter, A.; Wang, Y.; Hughes, K.A.; Robinson, G.E. Vitellogenin, juvenile hormone, insulin signaling, and queen honey bee longevity. *Proc. Natl. Acad. Sci. USA* **2007**, *104*, 7128–7133. [[CrossRef](#)]
63. Pinto, L.Z.; Bitondi, M.M.G.; Simões, Z.L.P. Inhibition of vitellogenin synthesis in *Apis mellifera* workers by a juvenile hormone analogue, pyriproxyfen. *J. Insect Physiol.* **2000**, *46*, 153–160. [[CrossRef](#)]
64. Cardoso-Júnior, C.A.; Guidugli-Lazzarini, K.R.; Hartfelder, K. DNA methylation affects the lifespan of honey bee (*Apis mellifera* L.) workers—Evidence for a regulatory module that involves vitellogenin expression but is independent of juvenile hormone function. *Insect Biochem. Mol. Biol.* **2018**, *92*, 21–29. [[CrossRef](#)]
65. Amdam, G.V.; Norberg, K.; Hagen, A.; Omholt, S.W. Social exploitation of vitellogenin. *Proc. Natl. Acad. Sci. USA* **2003**, *100*, 1799–1802. [[CrossRef](#)]
66. Trenczek, T.; Engels, W. Occurrence of vitellogenin in drone honeybees (*Apis mellifica*). *Int. J. Invertebr. Reprod. Dev.* **1986**, *10*, 307–311. [[CrossRef](#)]
67. Trenczek, T.; Zillikens, A.; Engels, W. Developmental patterns of vitellogenin haemolymph titre and rate of synthesis in adult drone honey bees (*Apis mellifera*). *J. Insect Physiol.* **1989**, *35*, 475–481. [[CrossRef](#)]
68. Piulachs, M.D.; Guidugli, K.R.; Barchuk, A.R.; Cruz, J.; Simões, Z.L.P.; Bellés, X. The vitellogenin of the honey bee, *Apis mellifera*: Structural analysis of the cDNA and expression studies. *Insect Biochem. Mol. Biol.* **2003**, *33*, 459–465. [[CrossRef](#)]
69. Kunert, K.; Crailsheim, K. Seasonal changes in carbohydrate, lipid and protein content in emerging worker honeybees and their mortality. *J. Apic. Res.* **1988**, *27*, 13–21. [[CrossRef](#)]
70. Amdam, G.V.; Omholt, S.W. The regulatory anatomy of honeybee lifespan. *J. Theor. Biol.* **2002**, *216*, 209–228. [[CrossRef](#)]
71. De Souza, D.A.; Kaftanoglu, O.; De Jong, D.; Page, R.E.; Amdam, G.V.; Wang, Y. Differences in the morphology, physiology and gene expression of honey bee queens and workers reared in vitro versus in situ. *Biol. Open* **2018**, *7*, bio036616. [[CrossRef](#)]
72. Otis, G.; Wheeler, D.E.; Buck, N.A.; Mattila, H.R. Storage proteins in winter honey bees. *APIACATA* **2004**, *38*, 352–357.

73. Switanek, M.; Crailsheim, K.; Truhetz, H.; Brodschneider, R. Modelling seasonal effects of temperature and precipitation on honey bee winter mortality in a temperate climate. *Sci. Total Environ.* **2017**, *579*, 1581–1587. [[CrossRef](#)]
74. Nielsen, A.; Reitan, T.; Rinvoll, A.W.; Brysting, A.K. Effects of competition and climate on a crop pollinator community. *Agric. Ecosyst. Environ.* **2017**, *246*, 253–260. [[CrossRef](#)]
75. Dalmon, A.; Peruzzi, M.; Le Conte, Y.; Alaux, C.; Pioz, M. Temperature-driven changes in viral loads in the honey bee *Apis mellifera*. *J. Invertebr. Pathol.* **2019**, *160*, 87–94. [[CrossRef](#)]
76. Huang, Z. Pollen nutrition affects honey bee stress resistance. *Terr. Arthropod Rev.* **2012**, *5*, 175–189. [[CrossRef](#)]
77. Fine, J.D.; Shpigler, H.Y.; Ray, A.M.; Beach, N.J.; Sankey, A.L.; Ahmed-Casch, A.; Huang, Z.Y.; Astrauskaite, I.; Chao, R.; Zhao, H.; et al. Quantifying the effects of pollen nutrition on honey bee queen egg laying with a new laboratory system. *PLoS ONE* **2018**, *13*, e0203444. [[CrossRef](#)]
78. Nürnberger, F.; Härtel, S.; Steffan-Dewenter, I. The influence of temperature and photoperiod on the timing of brood onset in hibernating honey bee colonies. *PeerJ* **2018**, *6*, e4801. [[CrossRef](#)]
79. Medrzycki, P.; Sgolastra, F.; Bortolotti, L.; Bogo, G.; Tosi, S.; Padovani, E.; Porrini, C.; Sabatini, A.G. Influence of brood rearing temperature on honey bee development and susceptibility to poisoning by pesticides. *J. Apic. Res.* **2010**, *49*, 52–59. [[CrossRef](#)]
80. Inouye, D.W. Effects of climate change on phenology, frost damage, and floral abundance of montane wildflowers. *Ecology* **2008**, *89*, 353–362. [[CrossRef](#)]
81. Williams, C.M.; Henry, H.A.L.; Sinclair, B.J. Cold truths: How winter drives responses of terrestrial organisms to climate change. *Biol. Rev.* **2015**, *90*, 214–235. [[CrossRef](#)]
82. Schenk, M.; Krauss, J.; Holzschuh, A. Desynchronizations in bee–plant interactions cause severe fitness losses in solitary bees. *J. Anim. Ecol.* **2018**, *87*, 139–149. [[CrossRef](#)]
83. Langowska, A.; Zawilak, M.; Sparks, T.H.; Glazaczow, A.; Tomkins, P.W.; Tryjanowski, P. Long-term effect of temperature on honey yield and honeybee phenology. *Int. J. Biometeorol.* **2017**, *61*, 1125–1132. [[CrossRef](#)]



© 2019 by the authors. Licensee MDPI, Basel, Switzerland. This article is an open access article distributed under the terms and conditions of the Creative Commons Attribution (CC BY) license (<http://creativecommons.org/licenses/by/4.0/>).

Article

The Year of the Honey Bee (*Apis mellifera* L.) with Respect to Its Physiology and Immunity: A Search for Biochemical Markers of Longevity

Martin Kunc ¹, Pavel Dobeš ¹, Jana Hurychová ¹, Libor Vojtek ¹, Silvana Beani Poiani ^{1,2}, Jiří Danihlák ³, Jaroslav Havlík ⁴, Dalibor Titěra ⁵ and Pavel Hyršl ^{1,*}

¹ Institute of Experimental Biology, Faculty of Science, Masaryk University, Kotlarska 2, 611 37 Brno, Czech Republic

² Department of Biology, Institute of Biosciences, Center of Study of Social Insects (CEIS), Sao Paulo State University—UNESP, Avenida 24A, 1515 Bela Vista, Rio Claro 13506-900, Brazil

³ Department of Biochemistry, Faculty of Science, Palacky University Olomouc, Slechtitelu 27, 783 71 Olomouc, Czech Republic

⁴ Department of Food Quality and Safety, Faculty of Agrobiolgy, Food and Natural Resources, Czech University of Life Sciences, Kamycka 129, 252 63 Prague, Czech Republic

⁵ Bee Research Institute, Libčice nad Vltavou 252 66, Czech Republic

* Correspondence: hyrsl@sci.muni.cz; Tel.: +420-549-494-510

Received: 27 June 2019; Accepted: 2 August 2019; Published: date

Supplementary Materials



Figure S1. To double-check vitellogenin bands identified at Coomassie stained gels, some gels were stained in parallel by silver according to Kirkeby *et al.* [1]. Gel electrophoretic analysis of vitellogenin concentration in drones (Drone 1, 2) and honey bee workers from summer season (Jun 2017, 2018) and winter season (Oct 2017). Bovine serum albumin was used as calibration to calculate concentration of vitellogenin. Size of proteins used in ladder (SDS-PAGE Molecular Weight Standard, Bio-rad, 161-0317, USA) is indicated in the figure.

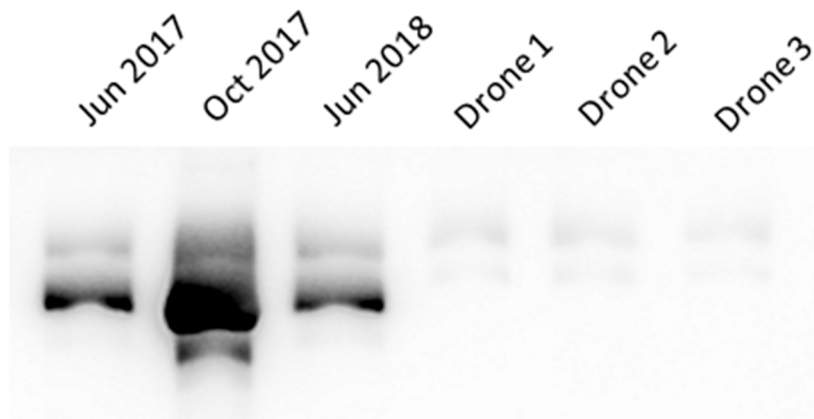


Figure S2. Western blot analysis of vitellogenin level in haemolymph of summer/winter population compared to drone haemolymph. For western blot, haemolymph samples were diluted 100×. Diluted samples were subjected to SDS-PAGE and electrotransferred onto Immobilon-P Membrane (Millipore) and immunodetected using primary antibody (Vitellogenin, kindly provided by RNDr. Dalibor Kodrík, CSc., Institute of entomology, Biology Centre CAS, 1:5000) and secondary antibody (Sigma-Aldrich, A0545, 1:5000). The blots were visualized by Immobilon Western Chemiluminescent HRP Substrate (Millipore, USA) in western blot imagining system Fusion SL (Vilber, France).

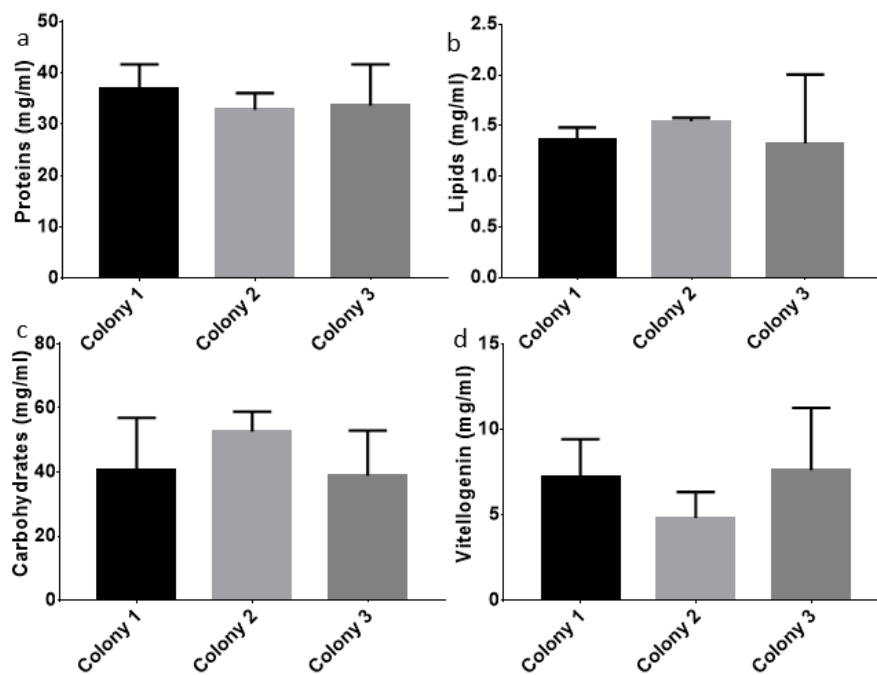


Figure S3. Comparison of physiological parameters: total concentration of proteins (a), lipids (b), carbohydrates (c) and vitellogenin (d) among experimental bee hive (Colony 1) and two different bee hives (Colony 2 and 3). The measurement was performed in June 2018. No significant difference was observed at the p -value 0.05. Columns indicate mean + SD, $n = 3-6$.

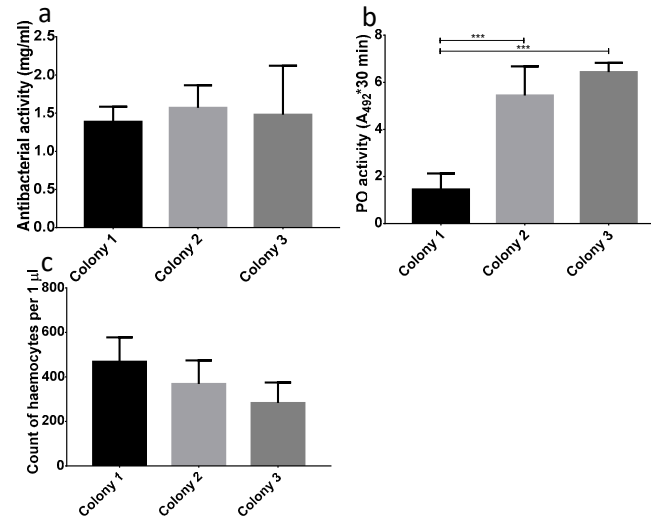


Figure S4. Comparison of immunological parameters: antibacterial activity (a), phenoloxidase activity (b) and count of haemocytes (c) among experimental bee hive (Colony 1) and two different bee hives (Colony 2 and 3). The measurement was performed in June 2018. Columns indicate mean + SD, $n = 3-6$. Asterisk indicates significant difference *** $p < 0.001$, ns = not significant.

Table S1. Compilation of statistical data for each tested season. The table contain n —sample size, mean, median, SD—standard deviation and SE—standard error for every tested parameter.

	Summer 2017					Winter 2017/2018					Summer 2018				
	n	Mean	Median	SD	SE	n	Mean	Median	SD	SE	n	Mean	Median	SD	SE
Proteins	12	35.83	40.33	10.7	3.089	27	61.95	62.4	13.77	2.65	19	31.69	32.49	6.297	1.445
Lipids	13	3.513	3.098	1.405	0.389	19	3.916	4.044	0.897	0.206	15	2.512	2.554	0.969	0.25
Carbohydrates	13	56.94	50.21	19.42	5.387	22	64.96	67.64	14.48	3.087	15	59.91	57.39	29.78	7.689
Vitellogenin	13	8.024	8.384	5.705	1.582	19	17.78	17.21	4.648	1.066	15	3.015	2.439	2.651	0.684
Antibacterial activity	13	0.665	0.459	0.435	0.121	19	3.64	3.353	1.557	0.357	15	2.349	2.526	0.795	0.205
PO activity	8	1.88	1.3	1.507	0.533	22	2.38	1.303	2.11	0.449	22	1.183	1.165	0.551	0.118
Haemocytes	18	494.8	412.5	288.5	67.99	24	495.6	431.3	154.1	31.46	16	403.9	393.8	139	34.76

Table S2. *p*-Values of Dunn's test calculated by GraphPad software. The table contain *p*-values for comparison of every season.

	Summer 2017 × Winter 2017/2018	Summer 2017 × Summer 2018	Summer 2018 × Winter 2017/2018
Proteins	<0.001	0.94	<0.001
Lipids	0.42	0.20	0.001
Carbohydrates	0.65	>0.99	>0.99
Vitellogenin	0.002	0.27	<0.001
Antibacterial activity	<0.001	0.003	0.12
PO activity	>0.99	>0.99	0.30
Haemocytes	>0.99	>0.99	0.31

Reference

1. Kirkeby, S.; Moe, D.; Bøg-Hansen, T.C. The silver staining procedure of sodium dodecyl sulfate-gels may be accelerated by shortening fixation time. *Electrophoresis* **1993**, *14*, 51–55.